

# Cdc6 (Phospho Ser54) Rabbit pAb

CatalogNo: YP0623 **Orthogonal Validated** 

## Key Features

### Host Species

- Rabbit

### Reactivity

- Human, Mouse, Monkey

### Applications

- WB, IHC, IF, ELISA

### MW

- 62kD (Observed)

### Isotype

- IgG

## Storage

**Storage\*** -15°C to -25°C/1 year (Do not lower than -25°C)**Formulation** Liquid in PBS containing 50% glycerol, 0.5% BSA and 0.02% sodium azide.

## Recommended Dilution Ratios

**WB 1:500-1:2000****IHC 1:100-1:300****ELISA 1:5000****IF 1:50-200**

## Basic Information

**Clonality** Polyclonal

## Immunogen Information

**Immunogen** The antiserum was produced against synthesized peptide derived from human CDC6 around the phosphorylation site of Ser54. AA range:20-69

## Specificity

Phospho-Cdc6 (S54) Polyclonal Antibody detects endogenous levels of Cdc6 protein only when phosphorylated at S54. The name of modified sites may be influenced by many factors, such as species (the modified site was not originally found in human samples) and the change of protein sequence (the previous protein sequence is incomplete, and the protein sequence may be prolonged with the development of protein sequencing technology). When naming, we will use the "numbers" in historical reference to keep the sites consistent with the reports. The antibody binds to the following modification sequence (lowercase letters are modification sites):PLSPR

## Target Information

**Gene name** CDC6

**Protein Name** Cell division control protein 6 homolog

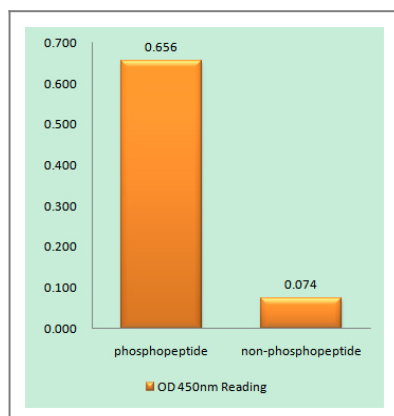
Organism	Gene ID	UniProt ID
Human	<a href="#">990</a> ;	<a href="#">Q99741</a> ;
Mouse	<a href="#">23834</a> ;	<a href="#">O89033</a> ;

**Cellular Localization** Nucleus . Cytoplasm . The protein is nuclear in G1 and cytoplasmic in S-phase cells (PubMed:9566895). .

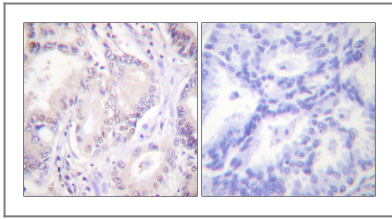
**Tissue specificity** Brain, Epithelium,

**Function** Function:Involved in the initiation of DNA replication. Also participates in checkpoint controls that ensure DNA replication is completed before mitosis is initiated.,similarity:Belongs to the CDC6/cdc18 family.,subcellular location:The protein is nuclear in G1 and cytoplasmic in S-phase cells.,subunit:Interacts with PCNA, ORC1L, cyclin-CDK and HUWE1.,

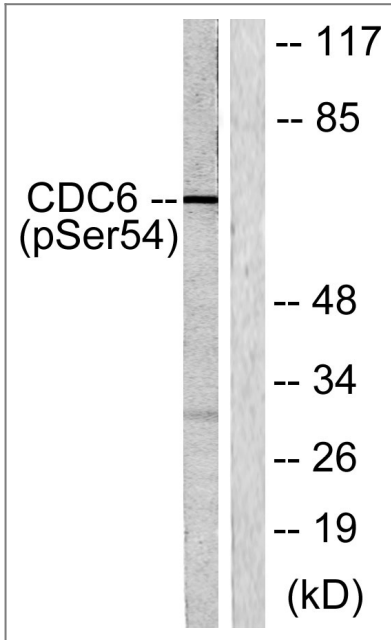
## Validation Data



Enzyme-Linked Immunosorbent Assay (Phospho-ELISA) for Immunogen Phosphopeptide (Phospho-left) and Non-Phosphopeptide (Phospho-right), using CDC6 (Phospho-Ser54) Antibody



Immunohistochemistry analysis of paraffin-embedded human lung carcinoma, using CDC6 (Phospho-Ser54) Antibody. The picture on the right is blocked with the phospho peptide.



Western blot analysis of lysates from COS7 cells treated with EGF 200ng/ml 30', using CDC6 (Phospho-Ser54) Antibody. The lane on the right is blocked with the phospho peptide.

## Contact information

Orders: [order@immunoway.com](mailto:order@immunoway.com)  
Support: [tech@immunoway.com](mailto:tech@immunoway.com)  
Telephone: 877-594-3616 (Toll Free), 408-747-0185  
Website: <http://www.immunoway.com>  
Address: 2200 Ringwood Ave San Jose, CA 95131 USA



Please scan the QR code to access additional product information:  
**Cdc6 (Phospho Ser54) Rabbit pAb**

For Research Use Only. Not for Use in Diagnostic Procedures.

[Antibody](#) | [ELISA Kits](#) | [Protein](#) | [Reagents](#)