

STAT5A/B (Phospho Ser726/731) Rabbit pAb

CatalogNo: YP0613 **Orthogonal Validated** 

Key Features

Host Species

- Rabbit

Reactivity

- Human, Mouse, Rat

Applications

- WB, IHC, IF, ELISA

MW

- 90kD (Observed)

Isotype

- IgG

Storage

Storage* -15°C to -25°C/1 year (Do not lower than -25°C)**Formulation** Liquid in PBS containing 50% glycerol, 0.5% BSA and 0.02% sodium azide.

Recommended Dilution Ratios

WB 1:500-1:2000**IHC 1:100-1:300****ELISA 1:40000****IF 1:50-200**

Basic Information

Clonality Polyclonal

Immunogen Information

Immunogen The antiserum was produced against synthesized peptide derived from human STAT5B around the phosphorylation site of Ser731. AA range: 697-746

Specificity

This antibody detects endogenous levels of STAT5A/B only when phosphorylated at Human:S726/731, Mouse:S725/730, Rat:S725/730, and dually phosphorylated at two sites. The name of modified sites may be influenced by many factors, such as species (the modified site was not originally found in human samples) and the change of protein sequence (the previous protein sequence is incomplete, and the protein sequence may be prolonged with the development of protein sequencing technology). When naming, we will use the "numbers" in historical reference to keep the sites consistent with the reports. The antibody binds to the following modification sequence (lowercase letters are modification sites):APsPA

| Target Information

Gene name STAT5A/STAT5B

Protein Name Signal transducer and activator of transcription 5A/B

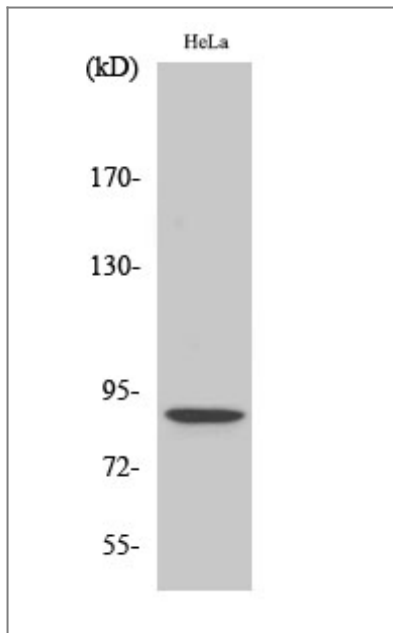
Organism	Gene ID	UniProt ID
Human	6777 ;	P42229 ; P51692 ;
Mouse	20850 ; 20851 ;	
Rat	24918 ; 25126 ;	Q62771 ; P52632 ;

Cellular Localization Cytoplasm . Nucleus . Translocated into the nucleus in response to phosphorylation.

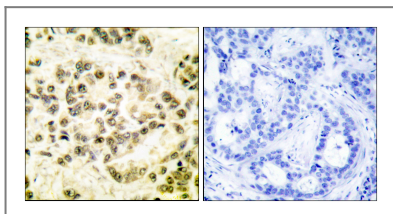
Tissue specificity Brain,Cervix,Epithelium,Lung,Placenta,Synovial memb

Function Function:Carries out a dual Function: signal transduction and activation of transcription. Binds to the GAS element and activates PRL-induced transcription.,online information:STAT5 entry,PTM:Tyrosine phosphorylated in response to IL-2, IL-3, IL-7, IL-15, GM-CSF, growth hormone, prolactin, erythropoietin and thrombopoietin. Tyrosine phosphorylation is required for DNA-binding activity and dimerization. Serine phosphorylation is also required for maximal transcriptional activity.,similarity:Belongs to the transcription factor STAT family.,similarity:Contains 1 SH2 domain.,subcellular location:Translocated into the nucleus in response to phosphorylation.,subunit:Forms a homodimer or a heterodimer with a related family member. Binds NR3C1 (By similarity). Interacts with NCOA1 and SOCS7.,

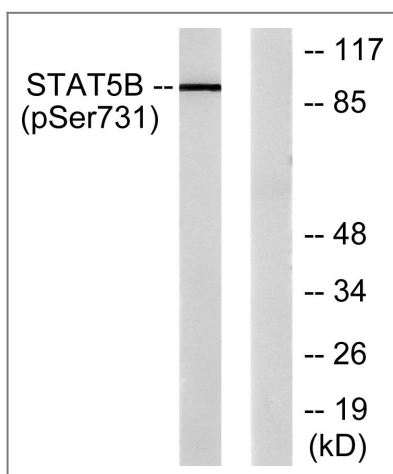
| Validation Data



Western Blot analysis of various cells using Phospho-Stat5 (S726/731) Polyclonal Antibody diluted at 1:500



Immunohistochemistry analysis of paraffin-embedded human breast carcinoma, using STAT5B (Phospho-Ser731) Antibody. The picture on the right is blocked with the phospho peptide.



Western blot analysis of lysates from RAW264.7 cells treated with EGF 200ng/ml 30', using STAT5B (Phospho-Ser731) Antibody. The lane on the right is blocked with the phospho peptide.

Contact information

Orders: order@immunoway.com
 Support: tech@immunoway.com
 Telephone: 877-594-3616 (Toll Free), 408-747-0185
 Website: <http://www.immunoway.com>
 Address: 2200 Ringwood Ave San Jose, CA 95131 USA



Please scan the QR code to access additional product information:
STAT5A/B (Phospho Ser726/731) Rabbit pAb

