

## SRF (Phospho Ser103) Rabbit pAb

CatalogNo: YP0611

Orthogonal Validated 

### Key Features

#### Host Species

- Rabbit

#### Reactivity

- Human, Mouse, Rat

#### Applications

- WB, IHC, IF, ELISA

#### MW

- 51kD (Observed)

#### Isotype

- IgG

### Recommended Dilution Ratios

**WB 1:500-1:2000****IHC 1:100-1:300****ELISA 1:5000****IF 1:50-200**

### Storage

**Storage\*** -15°C to -25°C/1 year (Do not lower than -25°C)**Formulation** Liquid in PBS containing 50% glycerol, 0.5% BSA and 0.02% sodium azide.

### Basic Information

**Clonality** Polyclonal

### Immunogen Information

**Immunogen** The antiserum was produced against synthesized peptide derived from human SRF around the phosphorylation site of Ser99. AA range: 71-120

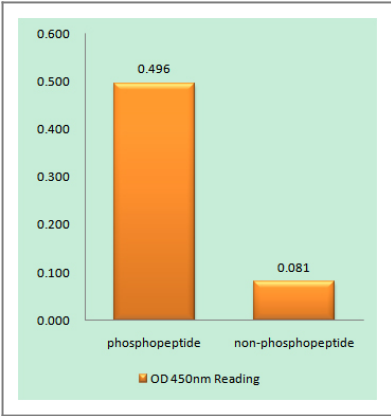
## Specificity

Phospho-SRF (S103) Polyclonal Antibody detects endogenous levels of SRF protein only when phosphorylated at S103. The name of modified sites may be influenced by many factors, such as species (the modified site was not originally found in human samples) and the change of protein sequence (the previous protein sequence is incomplete, and the protein sequence may be prolonged with the development of protein sequencing technology). When naming, we will use the "numbers" in historical reference to keep the sites consistent with the reports. The antibody binds to the following modification sequence (lowercase letters are modification sites):SLsEM

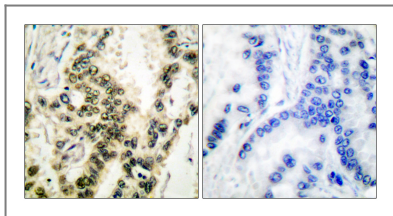
## Target Information

Gene name	SRF		
Protein Name	Serum response factor		
	Organism	Gene ID	UniProt ID
	Human	<a href="#">6722</a> ;	<a href="#">P11831</a> ;
	Mouse	<a href="#">20807</a> ;	<a href="#">Q9JM73</a> ;
Cellular Localization	Nucleus .		
Tissue specificity	Brain,Epithelium,Lung,Lymph,		
Function	Function:SRF is a transcription factor that binds to the serum response element (SRE), a short sequence of dyad symmetry located 300 bp to the 5' of the site of transcription initiation of some genes (such as FOS). Required for cardiac differentiation and maturation.,PTM:Phosphorylated by PRKDC.,similarity:Contains 1 MADS-box domain.,subunit:Binds DNA as a multimer, probably a dimer. Interacts with MLLT7/FOXO4, NKX3A and SSRP1. Interacts with ARID2 and SRFBP1 (By similarity). Forms complexes with ARID2, MYOCD, NKX2-5 and SRFBP1.,		

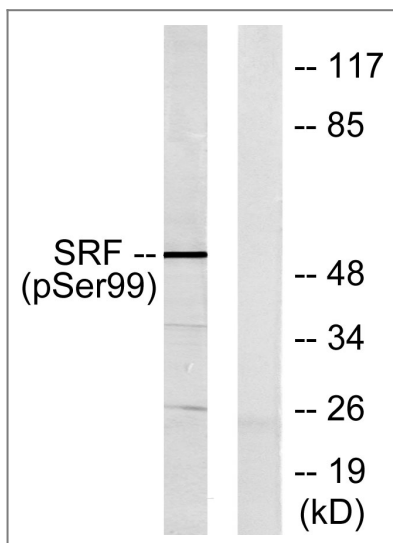
## Validation Data



Enzyme-Linked Immunosorbent Assay (Phospho-ELISA) for Immunogen Phosphopeptide (Phospho-left) and Non-Phosphopeptide (Phospho-right), using SRF (Phospho-Ser99) Antibody



Immunohistochemistry analysis of paraffin-embedded human lung carcinoma, using SRF (Phospho-Ser99) Antibody. The picture on the right is blocked with the phospho peptide.



Western blot analysis of lysates from LOVO cells treated with Serum 10% 15', using SRF (Phospho-Ser99) Antibody. The lane on the right is blocked with the phospho peptide.

## Contact information

Orders: [order@immunoway.com](mailto:order@immunoway.com)  
 Support: [tech@immunoway.com](mailto:tech@immunoway.com)  
 Telephone: 877-594-3616 (Toll Free), 408-747-0185  
 Website: <http://www.immunoway.com>  
 Address: 2200 Ringwood Ave San Jose, CA 95131 USA



Please scan the QR code to access additional product information:  
**SRF (Phospho Ser103) Rabbit pAb**

For Research Use Only. Not for Use in Diagnostic Procedures.

[Antibody](#) | [ELISA Kits](#) | [Protein](#) | [Reagents](#)