

p130 Cas (Phospho Tyr410) Rabbit pAb

CatalogNo: YP0605

Key Features

Host Species

- Rabbit

Reactivity

- Human, Mouse, Rat

Applications

- WB, IHC, IF, ELISA

MW

- 130kD (Observed)

Isotype

- IgG

Storage

Storage* -15°C to -25°C/1 year (Do not lower than -25°C)**Formulation** Liquid in PBS containing 50% glycerol, 0.5% BSA and 0.02% sodium azide.

Recommended Dilution Ratios

WB 1:500-1:2000**IHC 1:100-1:300****ELISA 1:5000****IF 1:50-200**

Basic Information

Clonality Polyclonal

Immunogen Information

Immunogen The antiserum was produced against synthesized peptide derived from human p130 Cas around the phosphorylation site of Tyr410. AA range:376-425**Specificity** Phospho-p130 Cas (Y410) Polyclonal Antibody detects endogenous levels of p130 Cas protein only when phosphorylated at Y410. The name of modified sites may be influenced by many factors, such as species (the modified site was not originally found in human samples) and the change of protein sequence (the previous protein sequence is incomplete, and the protein sequence may be prolonged with the development of protein sequencing technology). When naming, we will use the "numbers" in historical reference to keep the sites consistent with the reports. The antibody binds to the following modification sequence (lowercase letters are modification sites):GVyAV

Target Information

Gene name BCAR1

Protein Name Breast cancer anti-estrogen resistance protein 1

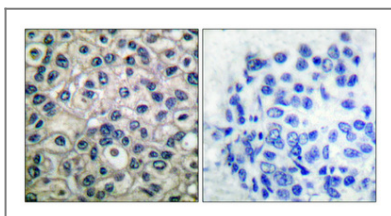
Organism	Gene ID	UniProt ID
Human	9564 ;	P56945 ;
Mouse	12927 ;	Q61140 ;
Rat	25414 ;	Q63767 ;

Cellular Localization Cell junction, focal adhesion . Cytoplasm . Cell projection, axon . Unphosphorylated form localizes in the cytoplasm (By similarity). Localizes to focal adhesion sites following integrin engagement (By similarity). .

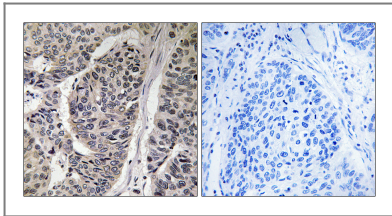
Tissue specificity Widely expressed with an abundant expression in the testis. Low level of expression seen in the liver, thymus, and peripheral blood leukocytes. The protein has been detected in a B-cell line.

Function Domain:A serine-rich region promotes activation of the serum response element (SRE).,Domain:Contains a central domain (substrate domain) containing multiple potential SH2-binding sites and a C-terminal domain containing a divergent helix-loop-helix (HLH) motif. The SH2-binding sites putatively bind CRK, NCK and ABL SH2 domains. The HLH motif is absolutely required for the induction of pseudohyphal growth in yeast and mediates heterodimerization with CASL.,Domain:The SH3 domain is necessary for the localization of the protein to focal adhesions and interacts with one proline-rich region of focal adhesion kinase 1.,Function:Docking protein which plays a central coordinating role for tyrosine-kinase-based signaling related to cell adhesion. Implicated in induction of cell migration. Overexpression confers antiestrogen resistance on breast cancer cells.,PTM:Focal adhesion kinase 1 phosphorylates the protein at the YDYVHL motif. SRC-family kinases are recruited to the phosphorylated sites and can phosphorylate other tyrosine residues. Tyrosine phosphorylation is triggered by integrin mediated adhesion of cells to the extracellular matrix.,similarity:Belongs to the CAS family.,similarity:Contains 1 SH3 domain.,subcellular location:Unphosphorylated form localizes in the cytoplasm and can move to the membrane upon tyrosine phosphorylation.,subunit:Forms complexes in vivo with focal adhesion kinase 1, adapter protein CRKL and LYN kinase. Can heterodimerize with CASL. Interacts with BCAR3, NPHP1, PTK2B and SH2D3C (By similarity). Interacts with activated CSPG4. Interacts with INPPL1/SHIP2.,tissue specificity:Widely expressed with an abundant expression in the testis. Low level of expression seen in the liver, thymus, and peripheral blood leukocytes. The protein has been detected in a B-cell line.,

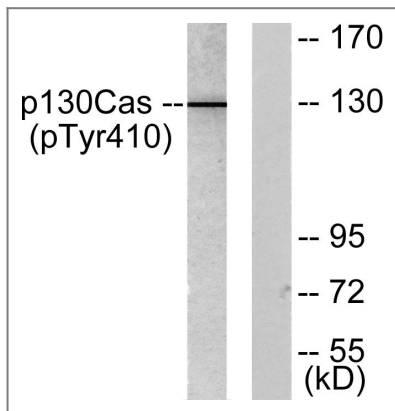
Validation Data



Immunohistochemical analysis of paraffin-embedded Human breast cancer. Antibody was diluted at 1:100(4° overnight). High-pressure and temperature Tris-EDTA,pH8.0 was used for antigen retrieval. Negative control (right) obtained from antibody was pre-absorbed by immunogen peptide.



Immunohistochemistry analysis of paraffin-embedded human breast carcinoma, using p130 Cas (Phospho-Tyr410) Antibody. The picture on the right is blocked with the phospho peptide.



Western blot analysis of lysates from NIH/3T3 cells, using p130 Cas (Phospho-Tyr410) Antibody. The lane on the right is blocked with the phospho peptide.

Contact information

Orders: order@immunoway.com
Support: tech@immunoway.com
Telephone: 877-594-3616 (Toll Free), 408-747-0185
Website: <http://www.immunoway.com>
Address: 2200 Ringwood Ave San Jose, CA 95131 USA



Please scan the QR code to access additional product information:
p130 Cas (Phospho Tyr410) Rabbit pAb

For Research Use Only. Not for Use in Diagnostic Procedures.

[Antibody](#) | [ELISA Kits](#) | [Protein](#) | [Reagents](#)