

C/EBP α (Phospho Ser21) Rabbit pAb

CatalogNo: YP0597

Orthogonal Validated 

Key Features

Host Species

- Rabbit

Reactivity

- Human, Mouse, Rat

Applications

- WB, IHC, IF, ELISA

MW

- 42kD (Observed)

Isotype

- IgG

Recommended Dilution Ratios

WB 1:500-1:2000**IHC 1:100-1:300****ELISA 1:5000****IF 1:50-200**

Storage

Storage* -15°C to -25°C/1 year (Do not lower than -25°C)**Formulation** Liquid in PBS containing 50% glycerol, 0.5% BSA and 0.02% sodium azide.

Basic Information

Clonality Polyclonal

Immunogen Information

Immunogen The antiserum was produced against synthesized peptide derived from human C/EBP- α around the phosphorylation site of Ser21. AA range: 6-55

Specificity Phospho-C/EBP α (S21) Polyclonal Antibody detects endogenous levels of C/EBP α protein only when phosphorylated at S21. The name of modified sites may be influenced by many factors, such as species (the modified site was not originally found in human samples) and the change of protein sequence (the previous protein sequence is incomplete, and the protein sequence may be prolonged with the development of protein sequencing technology). When naming, we will use the "numbers" in historical reference to keep the sites consistent with the reports. The antibody binds to the following modification sequence (lowercase letters are modification sites):LQsPP

| Target Information

Gene name CEBPA

Protein Name CCAAT/enhancer-binding protein alpha

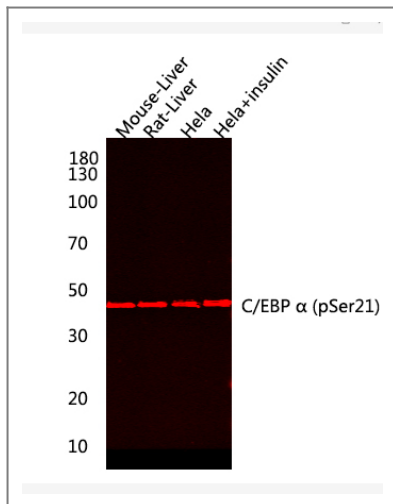
Organism	Gene ID	UniProt ID
Human	1050 ;	P49715 ;
Mouse	12606 ;	P53566 ;
Rat	24252 ;	P05554 ;

Cellular Localization Nucleus .; [Isoform 4]: Nucleus, nucleolus .

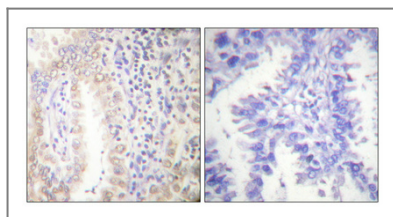
Tissue specificity Liver,Pancreas,Umbilical cord,White Matter pool- 5 brain tissues- f

Function Function:C/EBP is a DNA-binding protein that recognizes two different motifs: the CCAAT homology common to many promoters and the enhanced core homology common to many enhancers.,similarity:Belongs to the bZIP family.,similarity:Belongs to the bZIP family. C/EBP subfamily.,similarity:Contains 1 bZIP domain.,subunit:Binds DNA as a dimer and can form stable heterodimers with C/EBP beta and gamma. Interacts with UBN1. Interacts with HBV protein X.,

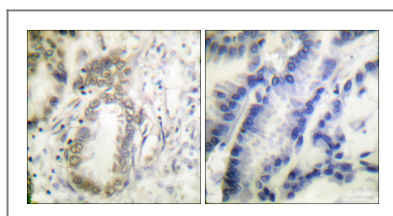
| Validation Data



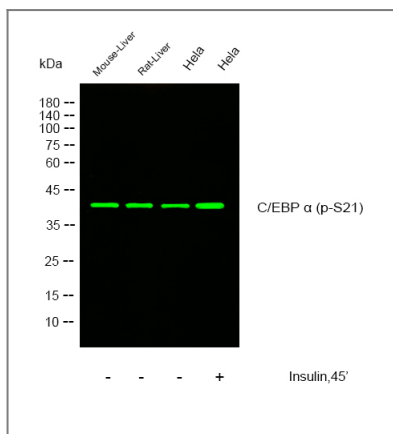
Western blot analysis of lysates from Mouse-liver, Rat-liver, Hela cells treated with 0.01U/ml 30min, using C/EBP α (phospho Ser21) Polyclonal Antibody. Primary Antibody was diluted at 1:1000 4° over night, secondary antibody(Immunoway cat:RS23710)was diluted at 1:10000, 37° 1hour.



Immunohistochemical analysis of paraffin-embedded Human lung cancer. Antibody was diluted at 1:100(4° overnight). High-pressure and temperature Tris-EDTA,pH8.0 was used for antigen retrieval. Negative contrl (right) obtained from antibody was pre-absorbed by immunogen peptide.



Immunohistochemistry analysis of paraffin-embedded human lung carcinoma, using C/EBP-alpha (Phospho-Ser21) Antibody. The picture on the right is blocked with the phospho peptide.



Western Blot analysis of mouse liver, rat liver, hela cells, hela cell treated or untreated by insulin. Primary Antibody was diluted at 1:1000. Secondary antibody(catalog#:RS23920 was diluted at 1:10000

Contact information

Orders: order@immunoway.com
 Support: tech@immunoway.com
 Telephone: 877-594-3616 (Toll Free), 408-747-0185
 Website: <http://www.immunoway.com>
 Address: 2200 Ringwood Ave San Jose, CA 95131 USA



Please scan the QR code to access additional product information:
C/EBP α (Phospho Ser21) Rabbit pAb

