

KIF2C (Phospho Ser95) Rabbit pAb

CatalogNo: YP0566 **Orthogonal Validated** 

Key Features

Host Species

- Rabbit

Reactivity

- Human, Mouse

Applications

- WB, IHC, IF, ELISA

MW

- 80kD (Observed)

Isotype

- IgG

Storage

Storage* -15°C to -25°C/1 year (Do not lower than -25°C)**Formulation** Liquid in PBS containing 50% glycerol, 0.5% BSA and 0.02% sodium azide.

Recommended Dilution Ratios

WB 1:500-2000**IHC 1:50-300****IF 1:200-1:1000****ELISA 5000-1:20000**

Basic Information

Clonality Polyclonal

Immunogen Information

Immunogen The antiserum was produced against synthesized peptide derived from human KIF2C around the phosphorylation site of Ser95. AA range:61-110

Specificity

Phospho-KIF2C (S95) Polyclonal Antibody detects endogenous levels of KIF2C protein only when phosphorylated at S95. The name of modified sites may be influenced by many factors, such as species (the modified site was not originally found in human samples) and the change of protein sequence (the previous protein sequence is incomplete, and the protein sequence may be prolonged with the development of protein sequencing technology). When naming, we will use the "numbers" in historical reference to keep the sites consistent with the reports. The antibody binds to the following modification sequence (lowercase letters are modification sites):RRsVN

Target Information

Gene name KIF2C

Protein Name Kinesin-like protein KIF2C

Organism	Gene ID	UniProt ID
Human	11004 ;	Q99661 ;
Mouse	73804 ;	Q922S8 ;

Cellular Localization

Cytoplasm, cytoskeleton . Nucleus . Chromosome, centromere . Chromosome, centromere, kinetochore . Associates with the microtubule network at the growing distal tip (the plus-end) of microtubules, probably through interaction with MTUS2/TIP150 and MAPRE1 (By similarity). Association with microtubule plus ends is also mediated by interaction with KIF18B. Centromeric localization requires the presence of BUB1 and SGO2. .

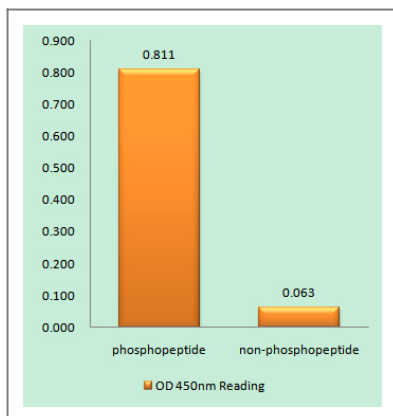
Tissue specificity

Expressed at high levels in thymus and testis, at low levels in small intestine, the mucosal lining of colon, and placenta, and at very low levels in spleen and ovary; expression is not detected in prostate, peripheral blood Leukocytes, heart, brain, lung, liver, skeletal muscle, kidney or pancreas. Isoform 2 is testis-specific.

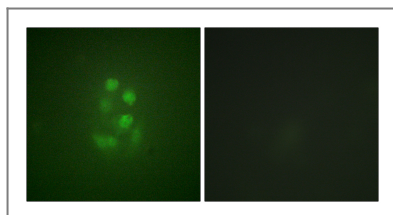
Function

Function:Present throughout the cell cycle, associates with centromeres at early prophase, and remains associated with the centromere until after telophase.,PTM:Phosphorylated upon DNA damage, probably by ATM or ATR.,similarity:Belongs to the kinesin-like protein family.,similarity:Belongs to the kinesin-like protein family. MCAK/KIF2 subfamily.,similarity:Contains 1 kinesin-motor domain.,subunit:Interacts with CENPH.,tissue specificity:Expressed at high levels in thymus and testis, at low levels in small intestine, the mucosal lining of colon, and placenta, and at very low levels in spleen and ovary; expression is not detected in prostate, peripheral blood Leukocytes, heart, brain, lung, liver, skeletal muscle, kidney or pancreas.,

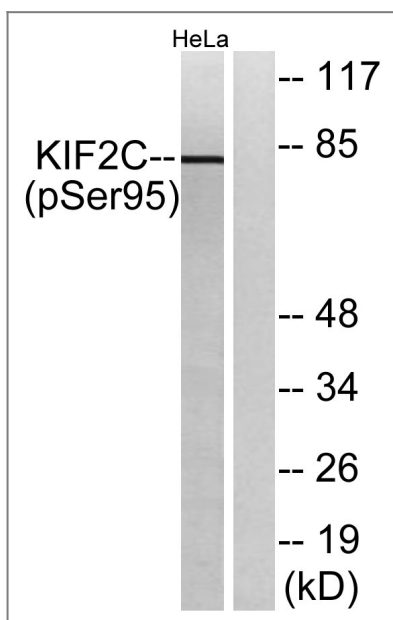
Validation Data



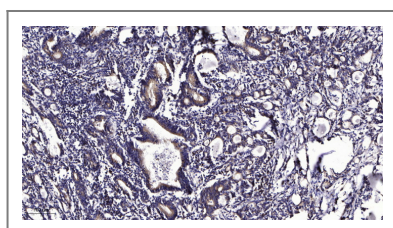
Enzyme-Linked Immunosorbent Assay (Phospho-ELISA) for Immunogen Phosphopeptide (Phospho-left) and Non-Phosphopeptide (Phospho-right), using KIF2C (Phospho-Ser95) Antibody



Immunofluorescence analysis of A549 cells, using KIF2C (Phospho-Ser95) Antibody. The picture on the right is blocked with the phospho peptide.



Western blot analysis of lysates from HeLa cells treated with TNF 10ng/ml 30', using KIF2C (Phospho-Ser95) Antibody. The lane on the right is blocked with the phospho peptide.



Immunohistochemical analysis of paraffin-embedded human Gastric adenocarcinoma. 1, Antibody was diluted at 1:200(4° overnight). 2, Tris-EDTA, pH9.0 was used for antigen retrieval. 3, Secondary antibody was diluted at 1:200(room temperature, 45min).

Contact information

Orders: order@immunoway.com
 Support: tech@immunoway.com
 Telephone: 877-594-3616 (Toll Free), 408-747-0185
 Website: <http://www.immunoway.com>
 Address: 2200 Ringwood Ave San Jose, CA 95131 USA



Please scan the QR code to access additional product information:
KIF2C (Phospho Ser95) Rabbit pAb

