

## Hsp90 (Phospho Ser226) Rabbit pAb

CatalogNo: YP0565 Orthogonal Validated 

### Key Features

#### Host Species

- Rabbit

#### Reactivity

- Human, Mouse, Rat

#### Applications

- WB, IHC, IF, ELISA

#### MW

- 83kD (Observed)

#### Isotype

- IgG

### Storage

**Storage\*** -15°C to -25°C/1 year (Do not lower than -25°C)

**Formulation** Liquid in PBS containing 50% glycerol, 0.5% BSA and 0.02% sodium azide.

### Recommended Dilution Ratios

**WB 1:500-1:2000**

**IHC 1:100-1:300**

**IF 1:200-1:1000**

**ELISA 1:10000**

**Not yet tested in other applications.**

### Basic Information

**Clonality** Polyclonal

### Immunogen Information

**Immunogen** The antiserum was produced against synthesized peptide derived from human HSP90B around the phosphorylation site of Ser226. AA range: 201-250

**Specificity** Phospho-HSP90 $\beta$  (S226) Polyclonal Antibody detects endogenous levels of HSP90 $\beta$  protein only when phosphorylated at S226. The name of modified sites may be influenced by many factors, such as species (the modified site was not originally found in human samples) and the change of protein sequence (the previous protein sequence is incomplete, and the protein sequence may be prolonged with the development of protein sequencing technology). When naming, we will use the "numbers" in historical reference to keep the sites consistent with the reports. The antibody binds to the following modification sequence (lowercase letters are modification sites):EISDD

## Target Information

**Gene name** HSP90AB1

**Protein Name** Heat shock protein HSP 90-beta

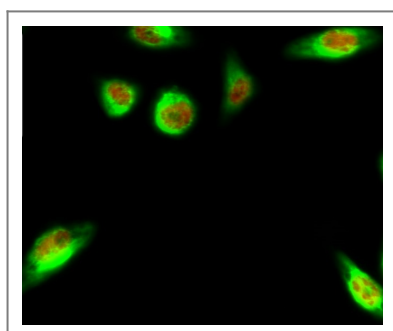
Organism	Gene ID	UniProt ID
Human	<a href="#">3326</a> ;	<a href="#">P08238</a> ;
Mouse	<a href="#">15516</a> ;	<a href="#">P11499</a> ;
Rat	<a href="#">301252</a> ;	<a href="#">P34058</a> ;

**Cellular Localization** Cytoplasm . Melanosome . Nucleus . Secreted . Cell membrane . Dynein axonemal particle . Cell surface . Identified by mass spectrometry in melanosome fractions from stage I to stage IV (PubMed:17081065). Translocates with BIRC2 from the nucleus to the cytoplasm during differentiation (PubMed:18239673). Secreted when associated with TGFB1 processed form (LAP) (PubMed:20599762). .

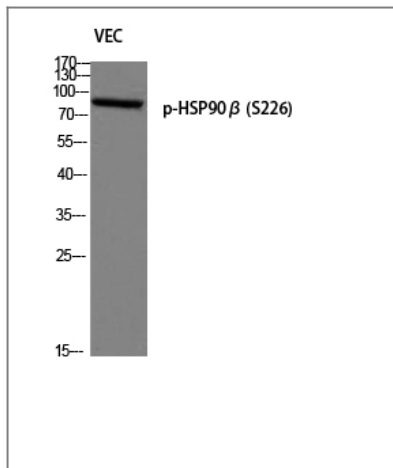
**Tissue specificity** Amygdala,Brain cortex,Colon,Colon carcinoma,Embryon

**Function** Function:Molecular chaperone. Has ATPase activity.,PTM:Phosphorylated upon DNA damage, probably by ATM or ATR.,similarity:Belongs to the heat shock protein 90 family.,subcellular location:Identified by mass spectrometry in melanosome fractions from stage I to stage IV.,subunit:Homodimer. Interacts with TP53/p53 (By similarity). Interacts with UNC45A. Binding to UNC45A involves 2 UNC45A monomers per HSP90AB1 dimer.,

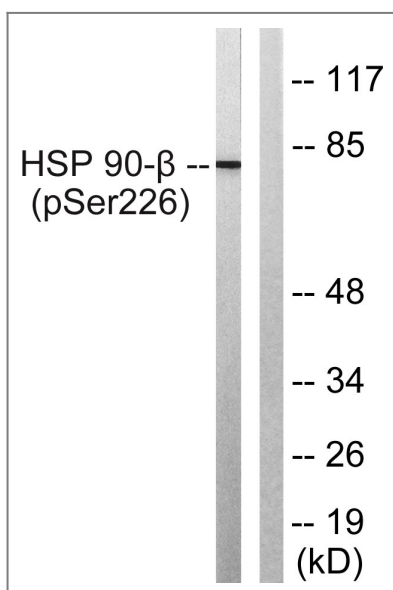
## Validation Data



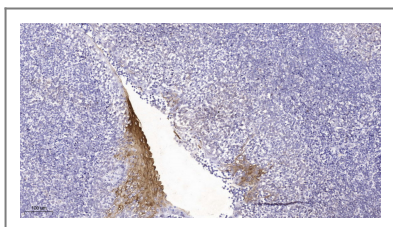
Immunofluorescence analysis of HeLa cell. 1, mouse Histone H3 Antibody YM3808 (red) was diluted at 1:200 (4°C overnight). Hsp90 (Phospho Ser226) Rabbit pAb (green) was diluted at 1:200 (4°C overnight). 2, Goat Anti Rabbit Alexa Fluor 488 Catalog:RS3211 was diluted at 1:1000 (room temperature, 50min). Goat Anti Mouse Alexa Fluor 594 Catalog:RS3608 was diluted at 1:1000 (room temperature, 50min).



Western blot analysis of VEC using p-HSP90 $\beta$  (S226) antibody.



Western blot analysis of lysates from A549 cells treated with serum 20% 15', using HSP90B (Phospho-Ser226) Antibody. The lane on the right is blocked with the phospho peptide.



Immunohistochemical analysis of paraffin-embedded human tonsil. 1, Tris-EDTA, pH 9.0 was used for antigen retrieval. 2 Antibody was diluted at 1:200 (4°C overnight). 3, Secondary antibody was diluted at 1:200 (room temperature, 45min).

## Contact information

Orders: [order@immunoway.com](mailto:order@immunoway.com)  
 Support: [tech@immunoway.com](mailto:tech@immunoway.com)  
 Telephone: 877-594-3616 (Toll Free), 408-747-0185  
 Website: <http://www.immunoway.com>  
 Address: 2200 Ringwood Ave San Jose, CA 95131 USA



Please scan the QR code to access additional product information:  
**Hsp90 (Phospho Ser226) Rabbit pAb**