

Na⁺/K⁺-ATPase α 1 (Phospho Ser23) Rabbit pAb

CatalogNo: YP0563

Key Features

Host Species

- Rabbit

Reactivity

- Rat

Applications

- WB,IF,ELISA

MW

- 113kD (Observed)

Isotype

- IgG

Storage

Storage* -15°C to -25°C/1 year(Do not lower than -25°C)

Formulation Liquid in PBS containing 50% glycerol, 0.5% BSA and 0.02% sodium azide.

Recommended Dilution Ratios

WB 1:500-1:2000

IF 1:100-1:300

ELISA 1:5000

Not yet tested in other applications.

Basic Information

Clonality Polyclonal

Immunogen Information

Immunogen The antiserum was produced against synthesized peptide derived from rat ATP1 alpha1/Na⁺K⁺ ATPase1 around the phosphorylation site of Ser23. AA range:15-64

Specificity

Phospho-Na⁺/K⁺-ATPase α 1 (S23) Polyclonal Antibody detects endogenous levels of Na⁺/K⁺-ATPase α 1 protein only when phosphorylated at S23. The name of modified sites may be influenced by many factors, such as species (the modified site was not originally found in human samples) and the change of protein sequence (the previous protein sequence is incomplete, and the protein sequence may be prolonged with the development of protein sequencing technology). When naming, we will use the "numbers" in historical reference to keep the sites consistent with the reports. The antibody binds to the following modification sequence (lowercase letters are modification sites):KKsKK

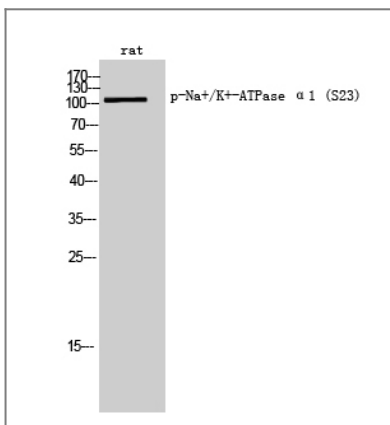
Target Information

Gene name ATP1A1

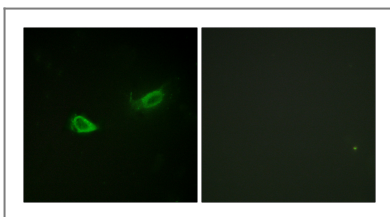
Protein Name Sodium/potassium-transporting ATPase subunit alpha-1

Organism	Gene ID	UniProt ID
Human	476;	P05023;
Rat	24211;	P06685;

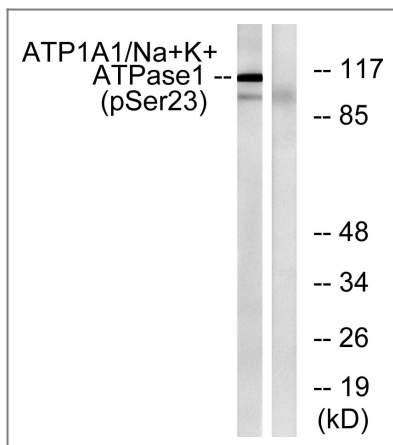
Validation Data



Western Blot analysis of rat cells using Phospho-Na⁺/K⁺-ATPase α 1 (S23) Polyclonal Antibody



Immunofluorescence analysis of NIH/3T3 cells, using ATP1 alpha1/Na⁺K⁺ ATPase1 (Phospho-Ser23) Antibody. The picture on the right is blocked with the phospho peptide.



Western blot analysis of lysates from rat brain, using ATP1 alpha1/Na+K+ ATPase1 (Phospho-Ser23) Antibody. The lane on the right is blocked with the phospho peptide.

Contact information

Orders: order@immunoway.com
 Support: tech@immunoway.com
 Telephone: 877-594-3616 (Toll Free), 408-747-0185
 Website: <http://www.immunoway.com>
 Address: 2200 Ringwood Ave San Jose, CA 95131 USA



Please scan the QR code to access additional product information:
Na⁺/K⁺-ATPase α1 (Phospho Ser23) Rabbit pAb

For Research Use Only. Not for Use in Diagnostic Procedures.

[Antibody](#) | [ELISA Kits](#) | [Protein](#) | [Reagents](#)