

## CD25 (Phospho Ser268) Rabbit pAb

CatalogNo: YP0559

### Key Features

#### Host Species

- Rabbit

#### Reactivity

- Human, Mouse, Rat

#### Applications

- WB, IHC, IF, ELISA

#### MW

- 55kD (Observed)

#### Isotype

- IgG

### Storage

**Storage\*** -15°C to -25°C/1 year (Do not lower than -25°C)

**Formulation** Liquid in PBS containing 50% glycerol, 0.5% BSA and 0.02% sodium azide.

### Recommended Dilution Ratios

**WB 1:500-1:2000**

**IHC 1:100-1:300**

**IF 1:200-1:1000**

**ELISA 1:10000**

**Not yet tested in other applications.**

### Basic Information

**Clonality** Polyclonal

### Immunogen Information

**Immunogen** The antiserum was produced against synthesized peptide derived from human IL-2R alpha/CD25 around the phosphorylation site of Ser268. AA range:223-272

## Specificity

Phospho-CD25 (S268) Polyclonal Antibody detects endogenous levels of CD25 protein only when phosphorylated at S268. The name of modified sites may be influenced by many factors, such as species (the modified site was not originally found in human samples) and the change of protein sequence (the previous protein sequence is incomplete, and the protein sequence may be prolonged with the development of protein sequencing technology). When naming, we will use the "numbers" in historical reference to keep the sites consistent with the reports. The antibody binds to the following modification sequence (lowercase letters are modification sites):RKsRR

---

## | Target Information

**Gene name** IL2RA

**Protein Name** Interleukin-2 receptor subunit alpha

Organism	Gene ID	UniProt ID
Human	<a href="#">3559;</a>	<a href="#">P01589;</a>
Mouse	<a href="#">16184;</a>	<a href="#">P01590;</a>
Rat	<a href="#">25704;</a>	<a href="#">P26897;</a>

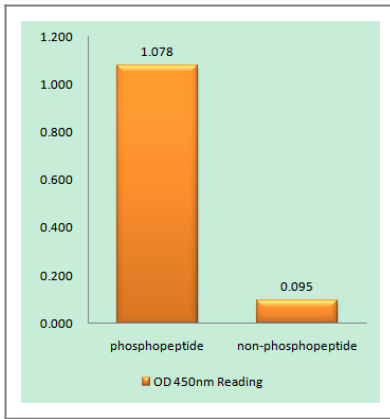
**Cellular Localization** Membrane; Single-pass type I membrane protein.

**Tissue specificity** Thymus,

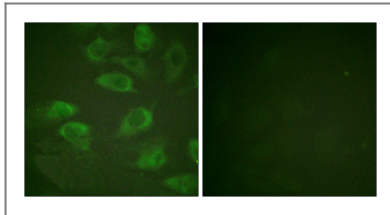
**Function** Disease:Genetic variations in IL2RA are associated with susceptibility to insulin-dependent diabetes mellitus type 10 (IDDM10) [MIM:601942].,Function:Receptor for interleukin-2.,online information:IL2RA mutation db,similarity:Contains 2 Sushi (CCP/SCR) domains.,subunit:Non-covalent dimer of an alpha and a beta chains. IL2R exists in 3 different forms: a high affinity dimer, an intermediate affinity monomer (beta chain), and a low affinity monomer (alpha chain). The high and intermediate affinity forms also associate with a gamma chain.,

---

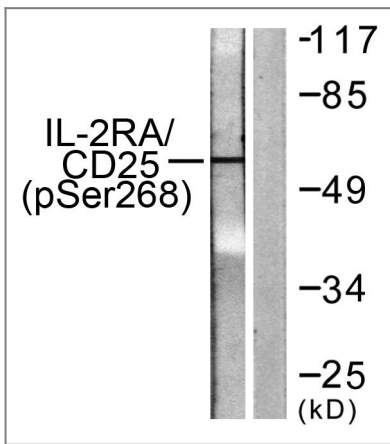
## | Validation Data



Enzyme-Linked Immunosorbent Assay (Phospho-ELISA) for Immunogen Phosphopeptide (Phospho-left) and Non-Phosphopeptide (Phospho-right), using IL-2R alpha/CD25 (Phospho-Ser268) Antibody



Immunofluorescence analysis of HeLa cells, using IL-2R alpha/CD25 (Phospho-Ser268) Antibody. The picture on the right is blocked with the phospho peptide.



Western blot analysis of lysates from LOVO cells, using IL-2R alpha/CD25 (Phospho-Ser268) Antibody. The lane on the right is blocked with the phospho peptide.

## Contact information

Orders: [order@immunoway.com](mailto:order@immunoway.com)  
 Support: [tech@immunoway.com](mailto:tech@immunoway.com)  
 Telephone: 877-594-3616 (Toll Free), 408-747-0185  
 Website: <http://www.immunoway.com>  
 Address: 2200 Ringwood Ave San Jose, CA 95131 USA



Please scan the QR code to access additional product information:  
**CD25 (Phospho Ser268) Rabbit pAb**

For Research Use Only. Not for Use in Diagnostic Procedures.

[Antibody](#) | [ELISA Kits](#) | [Protein](#) | [Reagents](#)