

## EphA2/3/4 (Phospho Tyr588/596) Rabbit pAb

CatalogNo: YP0550

### Key Features

#### Host Species

- Rabbit

#### Reactivity

- Human, Mouse, Rat

#### Applications

- WB, IF, ELISA

#### MW

- 130kD (Observed)

#### Isotype

- IgG

### Recommended Dilution Ratios

**WB 1:500-1:2000**

**IF 1:200-1:1000**

**ELISA 1:20000**

**Not yet tested in other applications.**

### Storage

#### Storage\*

-15°C to -25°C/1 year (Do not lower than -25°C)

#### Formulation

Liquid in PBS containing 50% glycerol, 0.5% BSA and 0.02% sodium azide.

### Basic Information

#### Clonality

Polyclonal

### Immunogen Information

#### Immunogen

The antiserum was produced against synthesized peptide derived from human EPHA2/3 around the phosphorylation site of Tyr588/596. AA range:556-605

#### Specificity

This antibody detects endogenous levels of EphA2/3/4 only when phosphorylated at Human:Y588/Y596, Mouse:Y589/Y596, Rat:-/Y597..The name of modified sites may be influenced by many factors, such as species (the modified site was not originally found in human samples) and the change of protein sequence (the previous protein sequence is incomplete, and the protein sequence may be prolonged with the development of protein sequencing technology). When naming, we will use the "numbers" in historical reference to keep the sites consistent with the reports. The antibody binds to the following modification sequence (lowercase letters are modification sites):TyVDP

## | Target Information

**Gene name** EPHA2/3/4

**Protein Name** Ephrin type-A receptor 2/3/4

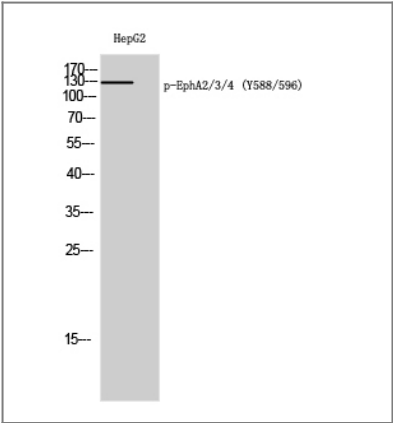
Organism	Gene ID	UniProt ID
Human	<a href="#">1969</a> ; <a href="#">2042</a> ; <a href="#">2043</a> ;	<a href="#">P29317</a> ; <a href="#">P29320</a> ; <a href="#">P54764</a> ;
Mouse	<a href="#">13836</a> ; <a href="#">13838</a> ;	
Rat	<a href="#">29210</a> ;	<a href="#">O08680</a> ;

**Cellular Localization** Cell membrane ; Single-pass type I membrane protein . Cell projection, ruffle membrane ; Single-pass type I membrane protein . Cell projection, lamellipodium membrane ; Single-pass type I membrane protein . Cell junction, focal adhesion . Present at regions of cell-cell contacts but also at the leading edge of migrating cells (PubMed:19573808, PubMed:20861311). Relocates from the plasma membrane to the cytoplasmic and perinuclear regions in cancer cells (PubMed:18794797). .

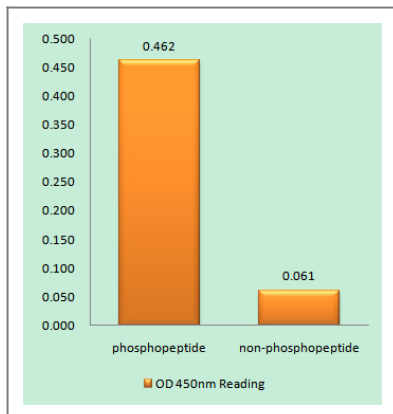
**Tissue specificity** Expressed in brain and glioma tissue and glioma cell lines (at protein level). Expressed most highly in tissues that contain a high proportion of epithelial cells, e.g. skin, intestine, lung, and ovary.

**Function** Catalytic activity:ATP + a [protein]-L-tyrosine = ADP + a [protein]-L-tyrosine phosphate.,Function:Receptor for members of the ephrin-A family. Binds to ephrin-A1, -A3, -A4 and -A5.,similarity:Belongs to the protein kinase superfamily. Tyr protein kinase family. Ephrin receptor subfamily.,similarity:Contains 1 protein kinase domain.,similarity:Contains 1 SAM (sterile alpha motif) domain.,similarity:Contains 2 fibronectin type-III domains.,subunit:Interacts with SLA (By similarity). Interacts with INPPL1/SHIP2.,tissue specificity:Expressed most highly in tissues that contain a high proportion of epithelial cells, e.g., skin, intestine, lung, and ovary.,

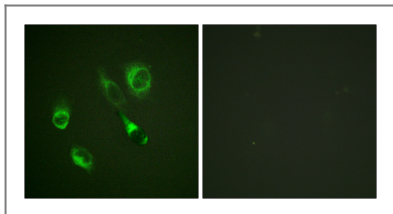
## | Validation Data



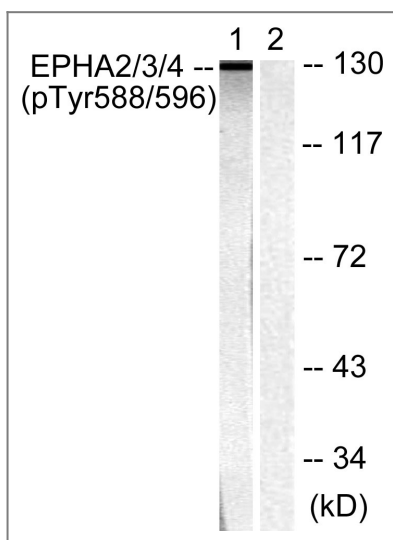
Western Blot analysis of HepG2 cells using Phospho-EphA2/3/4 (Y588/596) Polyclonal Antibody



Enzyme-Linked Immunosorbent Assay (Phospho-ELISA) for Immunogen Phosphopeptide (Phospho-left) and Non-Phosphopeptide (Phospho-right), using EPHA2/3 (Phospho-Tyr588/596) Antibody



Immunofluorescence analysis of HeLa cells, using EPHA2/3 (Phospho-Tyr588/596) Antibody. The picture on the right is blocked with the phosphopeptide.



Western blot analysis of lysates from HepG2 cells, using EPHA2/3 (Phospho-Tyr588/596) Antibody. The lane on the right is blocked with the phosphopeptide.

## Contact information

Orders: [order@immunoway.com](mailto:order@immunoway.com)  
 Support: [tech@immunoway.com](mailto:tech@immunoway.com)  
 Telephone: 877-594-3616 (Toll Free), 408-747-0185  
 Website: <http://www.immunoway.com>  
 Address: 2200 Ringwood Ave San Jose, CA 95131 USA



Please scan the QR code to access additional product information:  
**EphA2/3/4 (Phospho Tyr588/596) Rabbit pAb**