

CD5 (Phospho Tyr453) Rabbit pAb

CatalogNo: YP0544 **Orthogonal Validated** 

Key Features

Host Species

- Rabbit

Reactivity

- Human, Mouse, Rat

Applications

- WB, IHC, IF, ELISA

MW

- 40kD (Observed)

Isotype

- IgG

Storage

Storage* -15°C to -25°C/1 year (Do not lower than -25°C)**Formulation** Liquid in PBS containing 50% glycerol, 0.5% BSA and 0.02% sodium azide.

Recommended Dilution Ratios

WB 1:500-1:2000**IHC 1:100-1:300****IF 1:200-1:1000****ELISA 1:20000****Not yet tested in other applications.**

Basic Information

Clonality Polyclonal

Immunogen Information

Immunogen The antiserum was produced against synthesized peptide derived from human CD5 around the phosphorylation site of Tyr453. AA range: 421-470

Specificity

Phospho-CD5 (Y453) Polyclonal Antibody detects endogenous levels of CD5 protein only when phosphorylated at Y453. The name of modified sites may be influenced by many factors, such as species (the modified site was not originally found in human samples) and the change of protein sequence (the previous protein sequence is incomplete, and the protein sequence may be prolonged with the development of protein sequencing technology). When naming, we will use the "numbers" in historical reference to keep the sites consistent with the reports. The antibody binds to the following modification sequence (lowercase letters are modification sites):NEySQ

Target Information

Gene name CD5

Protein Name T-cell surface glycoprotein CD5

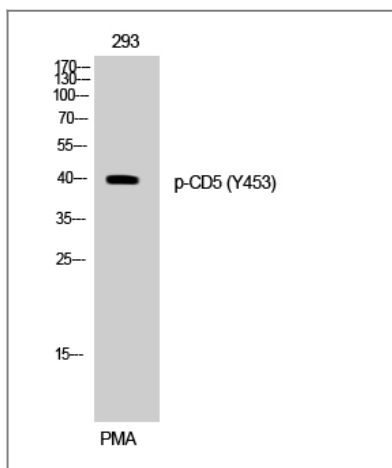
Organism	Gene ID	UniProt ID
Human	921 ;	P06127 ;
Mouse	12507 ;	P13379 ;
Rat	54236 ;	P51882 ;

Cellular Localization Cell membrane; Single-pass type I membrane protein.

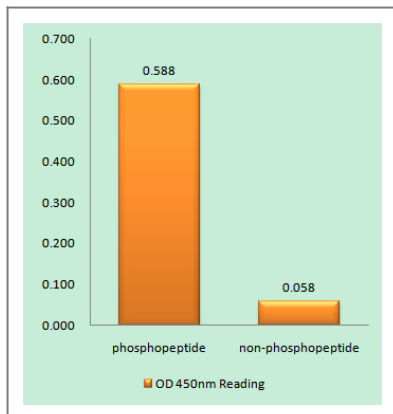
Tissue specificity Lymphocyte, Pancreas, Tonsil,

Function Function: May act as a receptor in regulating T-cell proliferation. CD5 interacts with CD72/LYB-2., similarity: Contains 3 SRCR domains.,

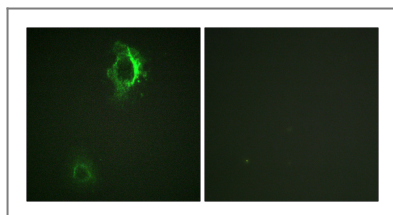
Validation Data



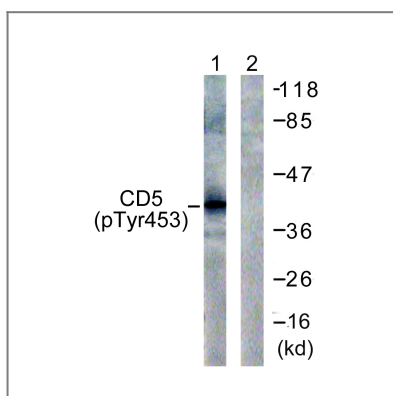
Western Blot analysis of 293 cells using Phospho-CD5 (Y453) Polyclonal Antibody



Enzyme-Linked Immunosorbent Assay (Phospho-ELISA) for Immunogen Phosphopeptide (Phospho-left) and Non-Phosphopeptide (Phospho-right), using CD5 (Phospho-Tyr453) Antibody



Immunofluorescence analysis of HepG2 cells, using CD5 (Phospho-Tyr453) Antibody. The picture on the right is blocked with the phospho peptide.



Western blot analysis of lysates from 293 cells treated with PMA 125ng/ml 30' , using CD5 (Phospho-Tyr453) Antibody. The lane on the right is blocked with the phospho peptide.

Contact information

Orders: order@immunoway.com
 Support: tech@immunoway.com
 Telephone: 877-594-3616 (Toll Free), 408-747-0185
 Website: <http://www.immunoway.com>
 Address: 2200 Ringwood Ave San Jose, CA 95131 USA



Please scan the QR code to access additional product information:
CD5 (Phospho Tyr453) Rabbit pAb

For Research Use Only. Not for Use in Diagnostic Procedures.

[Antibody](#) | [ELISA Kits](#) | [Protein](#) | [Reagents](#)