

# CaSR (Phospho Thr888) Rabbit pAb

CatalogNo: YP0541

## Key Features

### Host Species

- Rabbit

### Reactivity

- Human, Mouse, Rat

### Applications

- WB, IF, ELISA

### MW

- 140kD (Observed)

### Isotype

- IgG

## Storage

**Storage\*** -15°C to -25°C/1 year (Do not lower than -25°C)

**Formulation** Liquid in PBS containing 50% glycerol, 0.5% BSA and 0.02% sodium azide.

## Recommended Dilution Ratios

**WB 1:500-1:2000**

**IF 1:200-1:1000**

**ELISA 1:40000**

**Not yet tested in other applications.**

## Basic Information

**Clonality** Polyclonal

## Immunogen Information

**Immunogen** The antiserum was produced against synthesized peptide derived from human Calcium Sensing Receptor around the phosphorylation site of Thr888. AA range:854-903

**Specificity** Phospho-CaSR (T888) Polyclonal Antibody detects endogenous levels of CaSR protein only when phosphorylated at T888. The name of modified sites may be influenced by many factors, such as species (the modified site was not originally found in human samples) and the change of protein sequence (the previous protein sequence is incomplete, and the protein sequence may be prolonged with the development of protein sequencing technology). When naming, we will use the "numbers" in historical reference to keep the sites consistent with the reports. The antibody binds to the following modification sequence (lowercase letters are modification sites):RAtLR

---

## Target Information

**Gene name** CASR

**Protein Name** Extracellular calcium-sensing receptor

Organism	Gene ID	UniProt ID
Human	<a href="#">846;</a>	<a href="#">P41180;</a>
Mouse	<a href="#">12374;</a>	<a href="#">Q9QY96;</a>
Rat	<a href="#">24247;</a>	<a href="#">P48442;</a>

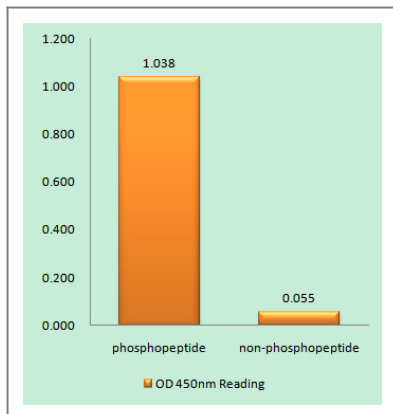
**Cellular Localization** Cell membrane ; Multi-pass membrane protein .

**Tissue specificity** Expressed in the temporal lobe, frontal lobe, parietal lobe, hippocampus, and cerebellum. Also found in kidney, lung, liver, heart, skeletal muscle, placenta.

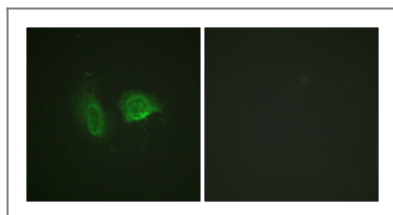
**Function** Disease:Defects in CASR are the cause of autosomal dominant hypoparathyroidism (FIH) [MIM:146200]. FIH is characterized by hypocalcemia and hyperphosphatemia due to inadequate secretion of parathyroid hormone. Symptoms are seizures, tetany and cramps.,Disease:Defects in CASR are the cause of familial hypocalciuric hypercalcemia type 1 (FHH) [MIM:145980]; in which the receptor has reduced activity. FHH is characterized by altered calcium homeostasis. Affected individuals exhibit mild or modest hypercalcemia, relative hypocalciuria, and inappropriately normal PTH levels.,Disease:Defects in CASR are the cause of neonatal severe primary hyperparathyroidism (NSHPT) [MIM:239200]; in which the receptor has reduced activity. NSHPT is a rare autosomal recessive life-threatening disorder characterized by very high serum calcium concentrations, skeletal demineralization, and parathyroid hyperplasia. In some instances NSHPT has been demonstrated to be the homozygous form of FHH.,Function:Senses changes in the extracellular concentration of calcium ions. The activity of this receptor is mediated by a G-protein that activates a phosphatidylinositol-calcium second messenger system.,PTM:N-glycosylated.,PTM:Ubiquitinated by RNF19A; which induces proteasomal degradation.,similarity:Belongs to the G-protein coupled receptor 3 family.,subunit:Interacts with VCP and RNF19A.,tissue specificity:Found in kidney, but not in brain, lung, liver, heart, skeletal muscle, or placenta.,

---

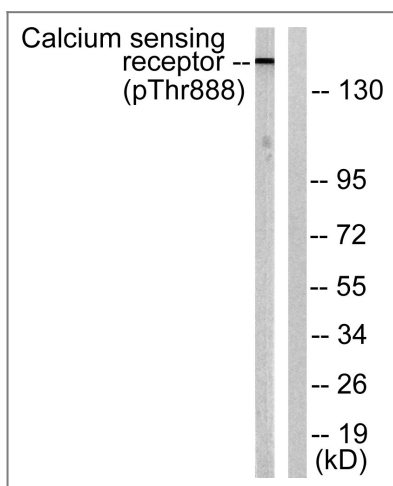
## Validation Data



Enzyme-Linked Immunosorbent Assay (Phospho-ELISA) for Immunogen Phosphopeptide (Phospho-left) and Non-Phosphopeptide (Phospho-right), using Calcium Sensing Receptor (Phospho-Thr888) Antibody



Immunofluorescence analysis of HeLa cells, using Calcium Sensing Receptor (Phospho-Thr888) Antibody. The picture on the right is blocked with the phospho peptide.



Western blot analysis of lysates from LOVO cells, using Calcium Sensing Receptor (Phospho-Thr888) Antibody. The lane on the right is blocked with the phospho peptide.

## Contact information

Orders: [order@immunoway.com](mailto:order@immunoway.com)  
 Support: [tech@immunoway.com](mailto:tech@immunoway.com)  
 Telephone: 877-594-3616 (Toll Free), 408-747-0185  
 Website: <http://www.immunoway.com>  
 Address: 2200 Ringwood Ave San Jose, CA 95131 USA



Please scan the QR code to access additional product information:  
**CaSR (Phospho Thr888) Rabbit pAb**

For Research Use Only. Not for Use in Diagnostic Procedures.

[Antibody](#) | [ELISA Kits](#) | [Protein](#) | [Reagents](#)