

MARCKS (Phospho Ser159) Rabbit pAb

CatalogNo: YP0525 Orthogonal Validated 

Key Features

Host Species

- Rabbit

Reactivity

- Human, Mouse, Rat

Applications

- WB, ELISA

MW

- 35kD (Observed)

Isotype

- IgG

Storage

Storage* -15°C to -25°C/1 year (Do not lower than -25°C)

Formulation Liquid in PBS containing 50% glycerol, 0.5% BSA and 0.02% sodium azide.

Recommended Dilution Ratios

WB 1:500-1:2000

ELISA 1:20000

Not yet tested in other applications.

Basic Information

Clonality Polyclonal

Immunogen Information

Immunogen The antiserum was produced against synthesized peptide derived from human MARCKS around the phosphorylation site of Ser158. AA range:126-175

Specificity Phospho-MARCKS (S158) Polyclonal Antibody detects endogenous levels of MARCKS protein only when phosphorylated at S158. The name of modified sites may be influenced by many factors, such as species (the modified site was not originally found in human samples) and the change of protein sequence (the previous protein sequence is incomplete, and the protein sequence may be prolonged with the development of protein sequencing technology). When naming, we will use the "numbers" in historical reference to keep the sites consistent with the reports. The antibody binds to the following modification sequence (lowercase letters are modification sites):RFsFK

Target Information

Gene name MARCKS

Protein Name Myristoylated alanine-rich C-kinase substrate

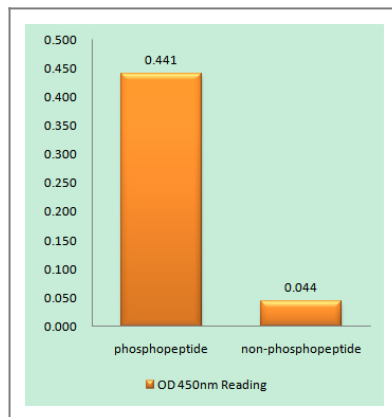
Organism	Gene ID	UniProt ID
Human	4082 ;	P29966 ;
Mouse	17118 ;	P26645 ;
Rat		P30009 ;

Cellular Localization Cytoplasm, cytoskeleton . Membrane ; Lipid-anchor .

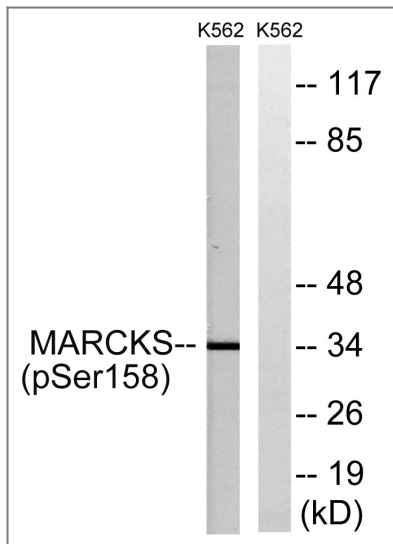
Tissue specificity Blood,Brain,Epithelium,Muscle,Skin,

Function Function:MARCKS is the most prominent cellular substrate for protein kinase C. This protein binds calmodulin, actin, and synapsin. MARCKS is a filamentous (F) actin cross-linking protein.,PTM:Phosphorylation by PKC displaces MARCKS from the membrane. It also inhibits the F-actin cross-linking activity.,similarity:Belongs to the MARCKS family.,

Validation Data



Enzyme-Linked Immunosorbent Assay (Phospho-ELISA) for Immunogen Phosphopeptide (Phospho-left) and Non-Phosphopeptide (Phospho-right), using MARCKS (Phospho-Ser158) Antibody



Western blot analysis of lysates from K562 cells treated with EGF 200ng/ml 30', using MARCKS (Phospho-Ser158) Antibody. The lane on the right is blocked with the phospho peptide.

Contact information

Orders: order@immunoway.com
 Support: tech@immunoway.com
 Telephone: 877-594-3616 (Toll Free), 408-747-0185
 Website: <http://www.immunoway.com>
 Address: 2200 Ringwood Ave San Jose, CA 95131 USA



Please scan the QR code to access additional product information:
MARCKS (Phospho Ser159) Rabbit pAb

For Research Use Only. Not for Use in Diagnostic Procedures.

[Antibody](#) | [ELISA Kits](#) | [Protein](#) | [Reagents](#)