

## EphA7 (Phospho Tyr791) Rabbit pAb

CatalogNo: YP0508

### Key Features

**Host Species**

- Rabbit

**Reactivity**

- Human, Mouse, Rat

**Applications**

- WB, ELISA

**MW**

- 112kD (Observed)

**Isotype**

- IgG

### Storage

**Storage\*** -15°C to -25°C/1 year (Do not lower than -25°C)**Formulation** Liquid in PBS containing 50% glycerol, 0.5% BSA and 0.02% sodium azide.

### Recommended Dilution Ratios

**WB 1:500-1:2000****ELISA 1:10000****Not yet tested in other applications.**

### Basic Information

**Clonality** Polyclonal

### Immunogen Information

**Immunogen** Synthesized phospho-peptide around the phosphorylation site of human EphA7 (phospho Tyr791)**Specificity** Phospho-EphA7 (Y791) Polyclonal Antibody detects endogenous levels of EphA7 protein only when phosphorylated at Y791. The name of modified sites may be influenced by many factors, such as species (the modified site was not originally found in human samples) and the change of protein sequence (the previous protein sequence is incomplete, and the protein sequence may be prolonged with the development of protein sequencing technology). When naming, we will use the "numbers" in historical reference to keep the sites consistent with the reports. The antibody binds to the following modification sequence (lowercase letters are modification sites): AVyTT

## Target Information

**Gene name** EPHA7

**Protein Name** Ephrin type-A receptor 7

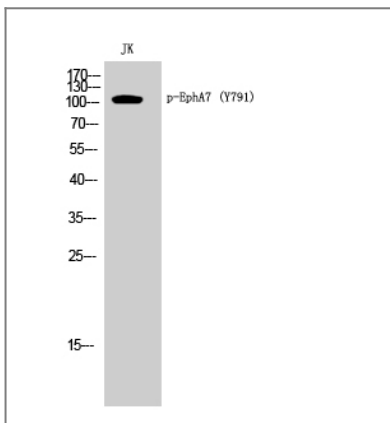
Organism	Gene ID	UniProt ID
Human	<a href="#">2045;</a>	<a href="#">Q15375;</a>
Mouse	<a href="#">13841;</a>	<a href="#">Q61772;</a>
Rat	<a href="#">171287;</a>	<a href="#">P54759;</a>

**Cellular Localization** Cell membrane ; Single-pass type I membrane protein .

**Tissue specificity** Widely expressed.

**Function** Catalytic activity:ATP + a [protein]-L-tyrosine = ADP + a [protein]-L-tyrosine phosphate.,Function:Receptor for members of the ephrin-A family. Binds to ephrin-A1, -A2, -A3, -A4 and -A5.,similarity:Belongs to the protein kinase superfamily. Tyr protein kinase family. Ephrin receptor subfamily.,similarity:Contains 1 protein kinase domain.,similarity:Contains 1 SAM (sterile alpha motif) domain.,similarity:Contains 2 fibronectin type-III domains.,subunit:Interacts with PRKCABP and GRIP1.,tissue specificity:Widely expressed.,

## Validation Data



Western Blot analysis of JK cells using Phospho-EphA7 (Y791) Polyclonal Antibody

## Contact information

Orders: order@immunoway.com  
Support: tech@immunoway.com  
Telephone: 877-594-3616 (Toll Free), 408-747-0185  
Website: http://www.immunoway.com  
Address: 2200 Ringwood Ave San Jose, CA 95131 USA



Please scan the QR code to access additional product information:  
**EphA7 (Phospho Tyr791) Rabbit pAb**

---

For Research Use Only. Not for Use in Diagnostic Procedures.

[Antibody](#) | [ELISA Kits](#) | [Protein](#) | [Reagents](#)