

ATF-4 (Phospho Ser219) Rabbit pAb

CatalogNo: YP0503

Key Features

Host Species

- Rabbit

Reactivity

- Human, Mouse

Applications

- WB, ELISA

MW

- 38kD (Observed)

Isotype

- IgG

Storage

Storage* -20°C/1 year, Ship by ice bag**Formulation** Liquid in PBS containing 50% glycerol, 0.5% BSA and 0.02% sodium azide.

Recommended Dilution Ratios

Western Blot: 1/500-1/2000**ELISA 1/10000****Not yet tested in other applications.**

Basic Information

Clonality Polyclonal

Immunogen Information

Immunogen Synthesized phospho-peptide around the phosphorylation site of human CREB-2 (phospho Ser219)**Specificity** Phospho-CREB-2 (S219) Polyclonal Antibody detects endogenous levels of CREB-2 protein only when phosphorylated at S219. The name of modified sites may be influenced by many factors, such as species (the modified site was not originally found in human samples) and the change of protein sequence (the previous protein sequence is incomplete, and the protein sequence may be prolonged with the development of protein sequencing technology). When naming, we will use the "numbers" in historical reference to keep the sites consistent with the reports. The antibody binds to the following modification sequence (lowercase letters are modification sites): NDSGI

Target Information

Gene name ATF4

Protein Name Cyclic AMP-dependent transcription factor ATF-4

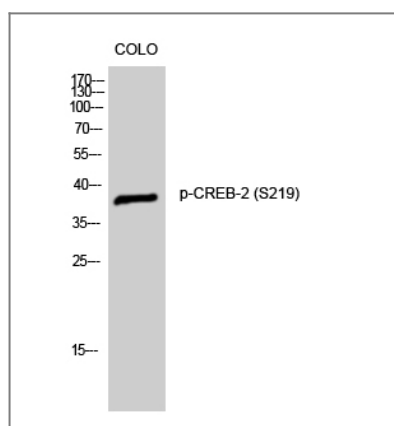
Organism	Gene ID	UniProt ID
Human	468 ;	P18848 ;
Mouse	11911 ;	Q06507 ;

Cellular Localization Nucleus . Nucleus speckle . Cytoplasm . Cell membrane . Cytoplasm, cytoskeleton, microtubule organizing center, centrosome . Colocalizes with GABBR1 in hippocampal neuron dendritic membranes (By similarity). Colocalizes with NEK6 at the centrosome (PubMed:20873783). Recruited to nuclear speckles following interaction with EP300/p300 (PubMed:16219772). .

Tissue specificity Bladder,Colon,Fibroblast,Leukemic T-cell,Lung,Ovary,Placenta,

Function Function:Transcriptional activator. Binds the cAMP response element (CRE) (consensus: 5'-GTGACGT[AC][AG]-3'), a sequence present in many viral and cellular promoters. It binds to a Tax-responsive enhancer element in the long terminal repeat of HTLV-I.,similarity:Belongs to the bZIP family.,similarity:Contains 1 bZIP domain.,subcellular location:Colocalizes with GABBR1 in hippocampal neuron dendritic membranes.,subunit:Interacts with the C-terminal region of GABBR1 via the leucine zipper of its C-terminal bZIP domain. Interacts with the C-terminal region of GABBR2 (By similarity). Binds DNA as a homo-or heterodimer. Interacts with the N-terminal region of CEP290.,

Validation Data



Western Blot analysis of CoLo cells using Phospho-CREB-2 (S219) Polyclonal Antibody

Contact information

Orders: order@immunoway.com
Support: tech@immunoway.com
Telephone: 877-594-3616 (Toll Free), 408-747-0185
Website: http://www.immunoway.com
Address: 2200 Ringwood Ave San Jose, CA 95131 USA



Please scan the QR code to access additional product information:
ATF-4 (Phospho Ser219) Rabbit pAb

For Research Use Only. Not for Use in Diagnostic Procedures.

[Antibody](#) | [ELISA Kits](#) | [Protein](#) | [Reagents](#)