

TPH2 (Phospho Ser19) Rabbit pAb

CatalogNo: YP0501

Key Features

Host Species

- Rabbit

Reactivity

- Human, Mouse, Rat

Applications

- WB, ELISA

MW

- 56kD (Observed)

Isotype

- IgG

Storage

Storage* -15°C to -25°C/1 year (Do not lower than -25°C)

Formulation Liquid in PBS containing 50% glycerol, 0.5% BSA and 0.02% sodium azide.

Recommended Dilution Ratios

WB 1:500-1:2000

ELISA 1:40000

Not yet tested in other applications.

Basic Information

Clonality Polyclonal

Immunogen Information

Immunogen Synthesized phospho-peptide around the phosphorylation site of human TPH2 (phospho Ser19)

Specificity Phospho-TPH2 (S19) Polyclonal Antibody detects endogenous levels of TPH2 protein only when phosphorylated at S19. The name of modified sites may be influenced by many factors, such as species (the modified site was not originally found in human samples) and the change of protein sequence (the previous protein sequence is incomplete, and the protein sequence may be prolonged with the development of protein sequencing technology). When naming, we will use the "numbers" in historical reference to keep the sites consistent with the reports. The antibody binds to the following modification sequence (lowercase letters are modification sites): GFsLD

Target Information

Gene name TPH2

Protein Name Tryptophan 5-hydroxylase 2

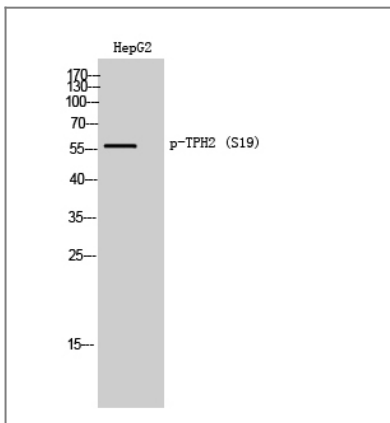
Organism	Gene ID	UniProt ID
Human	121278 ;	Q8IWU9 ;
Mouse	216343 ;	Q8CGV2 ;
Rat	317675 ;	Q8CGU9 ;

Cellular Localization cytosol,neuron projection,

Tissue specificity Brain specific.

Function Catalytic activity:L-tryptophan + tetrahydrobiopterin + O(2) = 5-hydroxy-L-tryptophan + 4a-hydroxytetrahydrobiopterin.,cofactor:Fe(2+) ion.,Disease:Genetic variation in TPH2 may influence susceptibility to major depressive disorder (MDD) [MIM:608516].,pathway:Aromatic compound metabolism; serotonin biosynthesis; serotonin from L-tryptophan: step 1/2.,similarity:Belongs to the biopterin-dependent aromatic amino acid hydroxylase family.,similarity:Contains 1 ACT domain.,tissue specificity:Brain specific.,

Validation Data



Western Blot analysis of HepG2 cells using Phospho-TPH2 (S19) Polyclonal Antibody

Contact information

Orders: order@immunoway.com
Support: tech@immunoway.com
Telephone: 877-594-3616 (Toll Free), 408-747-0185
Website: <http://www.immunoway.com>
Address: 2200 Ringwood Ave San Jose, CA 95131 USA



Please scan the QR code to access additional product information:
TPH2 (Phospho Ser19) Rabbit pAb

