

## PC-PLD1 (Phospho Thr147) Rabbit pAb

CatalogNo: YP0487

Orthogonal Validated 

### Key Features

#### Host Species

- Rabbit

#### Reactivity

- Human, Mouse, Rat

#### Applications

- WB, ELISA, IHC

#### MW

- 120kD (Observed)

#### Isotype

- IgG

### Storage

**Storage\*** -15°C to -25°C/1 year (Do not lower than -25°C)

**Formulation** Liquid in PBS containing 50% glycerol, 0.5% BSA and 0.02% sodium azide.

### Recommended Dilution Ratios

**WB 1:500-2000**

**IHC 1:50-300**

**ELISA 1:2000-20000**

### Basic Information

**Clonality** Polyclonal

### Immunogen Information

**Immunogen** Synthesized phospho-peptide around the phosphorylation site of human PC-PLD1 (phospho Thr147)

**Specificity** Phospho-PC-PLD1 (T147) Polyclonal Antibody detects endogenous levels of PC-PLD1 protein only when phosphorylated at T147. The name of modified sites may be influenced by many factors, such as species (the modified site was not originally found in human samples) and the change of protein sequence (the previous protein sequence is incomplete, and the protein sequence may be prolonged with the development of protein sequencing technology). When naming, we will use the "numbers" in historical reference to keep the sites consistent with the reports. The antibody binds to the following modification sequence (lowercase letters are modification sites): RHTFR

---

## | Target Information

**Gene name** PLD1

**Protein Name** Phospholipase D1

Organism	Gene ID	UniProt ID
Human	<a href="#">5337</a> ;	<a href="#">Q13393</a> ;
Mouse		<a href="#">Q9Z280</a> ;
Rat	<a href="#">25096</a> ;	<a href="#">P70496</a> ;

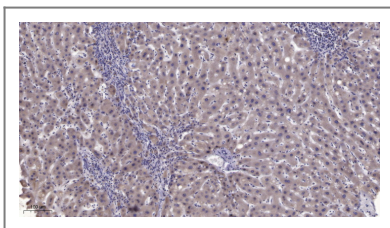
**Cellular Localization** Cytoplasm, perinuclear region . Endoplasmic reticulum membrane ; Lipid-anchor ; Cytoplasmic side . Golgi apparatus membrane ; Lipid-anchor ; Cytoplasmic side . Late endosome membrane ; Lipid-anchor ; Cytoplasmic side .

**Tissue specificity** Expressed abundantly in the pancreas and heart and at high levels in brain, placenta, spleen, uterus and small intestine.

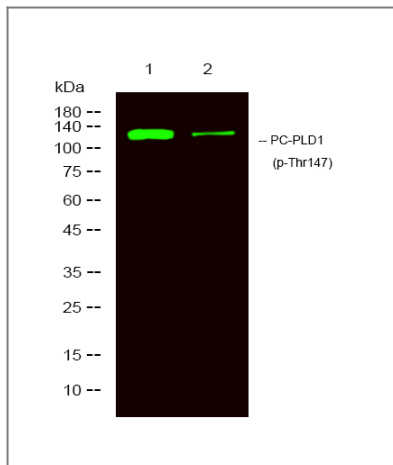
**Function** Catalytic activity:A phosphatidylcholine + H(2)O = choline + a phosphatidate.,enzyme regulation:Stimulated by phosphatidylinositol 4,5-bisphosphate and phosphatidylinositol 3,4,5-trisphosphate, activated by the phosphokinase C-alpha, by the ADP-ribosylation factor-1 (ARF-1), and to a lesser extent by GTP-binding proteins: RHO A, RAC-1 and CDC42. Inhibited by oleate.,Function:Implicated as a critical step in numerous cellular pathways, including signal transduction, membrane trafficking, and the regulation of mitosis. May be involved in the regulation of perinuclear intravesicular membrane traffic.,online information:Phospholipase D entry,similarity:Belongs to the phospholipase D family.,similarity:Contains 1 PH domain.,similarity:Contains 1 PX (phox homology) domain.,similarity:Contains 2 PLD phosphodiesterase domains.,subunit:Interacts with PIP5K1A.,tissue specificity:Expressed abundantly in the pancreas and heart and at high levels in brain, placenta, spleen, uterus and small intestine.,

---

## | Validation Data



Immunohistochemical analysis of paraffin-embedded human liver cancer. 1, Antibody was diluted at 1:200(4° overnight). 2, Tris-EDTA,pH9.0 was used for antigen retrieval. 3,Secondary antibody was diluted at 1:200(room temperature, 45min).



Western Blot analysis of 1 HeLa, 2 treated with LPS 100ng/mL 20min, using primary antibody at 1:1000 dilution. Secondary antibody(catalog#:RS23920) was diluted at 1:10000

## Contact information

Orders: [order@immunoway.com](mailto:order@immunoway.com)  
Support: [tech@immunoway.com](mailto:tech@immunoway.com)  
Telephone: 877-594-3616 (Toll Free), 408-747-0185  
Website: <http://www.immunoway.com>  
Address: 2200 Ringwood Ave San Jose, CA 95131 USA



Please scan the QR code to access additional product information:  
**PC-PLD1 (Phospho Thr147) Rabbit pAb**

For Research Use Only. Not for Use in Diagnostic Procedures.

[Antibody](#) | [ELISA Kits](#) | [Protein](#) | [Reagents](#)