

Lck BP-1 (Phospho Tyr397) Rabbit pAb

CatalogNo: YP0484

Key Features

Host Species

- Rabbit

Reactivity

- Human, Mouse, Rat

Applications

- WB, IHC

MW

- 55kD (Observed)

Isotype

- IgG

Storage

Storage* -15°C to -25°C/1 year (Do not lower than -25°C)

Formulation Liquid in PBS containing 50% glycerol, 0.5% BSA and 0.02% sodium azide.

Recommended Dilution Ratios

WB 1:500-2000

IHC 1:50-300

Basic Information

Clonality Polyclonal

Immunogen Information

Immunogen The antiserum was produced against synthesized peptide derived from human HS1 around the phosphorylation site of Tyr397. AA range:366-415

Specificity Phospho-Lck BP-1 (Y397) Polyclonal Antibody detects endogenous levels of Lck BP-1 protein only when phosphorylated at Y397. The name of modified sites may be influenced by many factors, such as species (the modified site was not originally found in human samples) and the change of protein sequence (the previous protein sequence is incomplete, and the protein sequence may be prolonged with the development of protein sequencing technology). When naming, we will use the "numbers" in historical reference to keep the sites consistent with the reports. The antibody binds to the following modification sequence (lowercase letters are modification sites):GDyEE

Target Information

Gene name HCLS1

Protein Name Hematopoietic lineage cell-specific protein

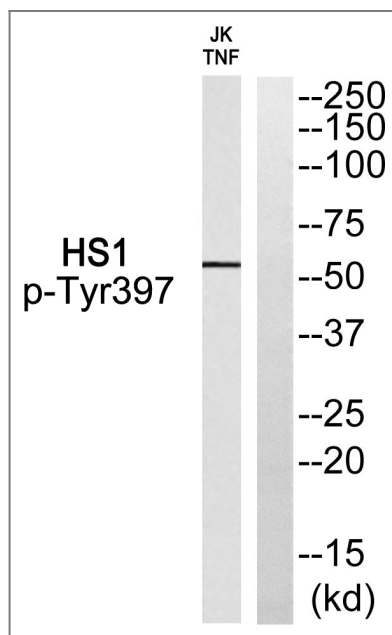
Organism	Gene ID	UniProt ID
Human	3059 ;	P14317 ;
Mouse		P49710 ;

Cellular Localization Membrane ; Peripheral membrane protein . Cytoplasm . Mitochondrion .

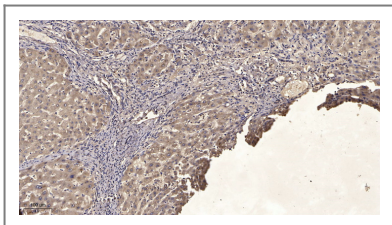
Tissue specificity Expressed only in tissues and cells of hematopoietic origin.

Function developmental stage:Expressed in early stage of myeloid and erythroid differentiation.,Function:Substrate of the antigen receptor-coupled tyrosine kinase. Plays a role in antigen receptor signaling for both clonal expansion and deletion in lymphoid cells. May also be involved in the regulation of gene expression.,PTM:Phosphorylated by LYN; rapidly after cross-linking of surface IgM on B-cells.,similarity:Contains 1 SH3 domain.,similarity:Contains 4 cortactin repeats.,subunit:Associates with the SH2 and SH3 domains of LCK. Binding to he LCK SH3 domain occurs constitutively, while binding to the LCK SH2 domain occurs only upon TCR stimulation. A similar binding pattern was observed with LYN, but not with FYN in which the FYN SH2 region associates upon TCR stimulation but the FYN SH3 region does not associate regardless of TCR stimulation. Directly associates with HAX1, through binding to its C-terminal region. Interacts with HS1BP3.,tissue specificity:Expressed only in tissues and cells of hematopoietic origin.,

Validation Data



Western blot analysis of HS1 (Phospho-Tyr397) Antibody. The lane on the right is blocked with the HS1 (Phospho-Tyr397) peptide.



Immunohistochemical analysis of paraffin-embedded human liver cancer. 1, Antibody was diluted at 1:200(4° overnight). 2, Tris-EDTA,pH9.0 was used for antigen retrieval. 3,Secondary antibody was diluted at 1:200(room temperature, 45min).

| Contact information

Orders: order@immunoway.com
Support: tech@immunoway.com
Telephone: 877-594-3616 (Toll Free), 408-747-0185
Website: <http://www.immunoway.com>
Address: 2200 Ringwood Ave San Jose, CA 95131 USA



Please scan the QR code to access additional product information:
Lck BP-1 (Phospho Tyr397) Rabbit pAb

For Research Use Only. Not for Use in Diagnostic Procedures.

[Antibody](#) | [ELISA Kits](#) | [Protein](#) | [Reagents](#)