

# Zyxin (Phospho Ser142) Rabbit pAb

CatalogNo: YP0481 Orthogonal Validated 

## Key Features

### Host Species

- Rabbit

### Reactivity

- Human, Mouse, Rat

### Applications

- WB, ELISA

### MW

- 61kD (Observed)

### Isotype

- IgG

## Storage

**Storage\*** -15°C to -25°C/1 year (Do not lower than -25°C)

**Formulation** Liquid in PBS containing 50% glycerol, 0.5% BSA and 0.02% sodium azide.

## Recommended Dilution Ratios

**WB 1:500-1:2000**

**ELISA 1:5000**

**Not yet tested in other applications.**

## Basic Information

**Clonality** Polyclonal

## Immunogen Information

**Immunogen** The antiserum was produced against synthesized peptide derived from human Zyxin around the phosphorylation site of Ser142. AA range: 108-157

**Specificity** Phospho-Zyxin (S142) Polyclonal Antibody detects endogenous levels of Zyxin protein only when phosphorylated at S142. The name of modified sites may be influenced by many factors, such as species (the modified site was not originally found in human samples) and the change of protein sequence (the previous protein sequence is incomplete, and the protein sequence may be prolonged with the development of protein sequencing technology). When naming, we will use the "numbers" in historical reference to keep the sites consistent with the reports. The antibody binds to the following modification sequence (lowercase letters are modification sites): KVsSI

## Target Information

**Gene name** ZYX

**Protein Name** Zyxin

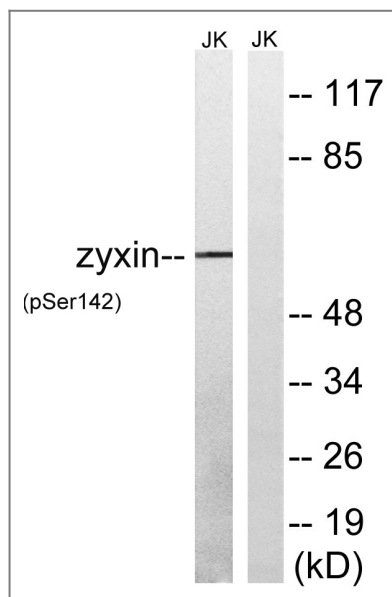
Organism	Gene ID	UniProt ID
Human	<a href="#">7791</a> ;	<a href="#">Q15942</a> ;
Mouse		<a href="#">Q62523</a> ;

**Cellular Localization** Cytoplasm. Cytoplasm, cytoskeleton. Nucleus. Cell junction, focal adhesion. Associates with the actin cytoskeleton near the adhesion plaques. Enters the nucleus in the presence of HESX1.

**Tissue specificity** Cervix carcinoma, Epididymis, Epithelium, Kidney, Placenta, Platelet, Skin, Umbilical vein, Uterus,

**Function** Function: Adhesion plaque protein. Binds alpha-actinin and the CRP protein. May be a component of a signal transduction pathway that mediates adhesion-stimulated changes in gene expression., similarity: Belongs to the zyxin/ajuba family., similarity: Contains 3 LIM zinc-binding domains., subcellular location: Associates with the actin cytoskeleton near the adhesion plaques. Enters the nucleus in the presence of HESX1., subunit: Interacts with HPV type 6 protein E6. Does not interact significantly with E6 proteins from HPV types 11, 16, or 18. Interacts, via the Pro-rich regions, with the EVH1 domains of ENAH and VASP. Interaction with ENA/VASP family members is important for their targeting to focal adhesions and the formation of actin-rich structures.,

## Validation Data



Western blot analysis of lysates from Jurkat cells treated with paclitaxel 1uM 24h, using Zyxin (Phospho-Ser142) Antibody. The lane on the right is blocked with the phospho peptide.

## Contact information

Orders: order@immunoway.com  
Support: tech@immunoway.com  
Telephone: 877-594-3616 (Toll Free), 408-747-0185  
Website: http://www.immunoway.com  
Address: 2200 Ringwood Ave San Jose, CA 95131 USA



Please scan the QR code to access additional product information:  
**Zyxin (Phospho Ser142) Rabbit pAb**

---

For Research Use Only. Not for Use in Diagnostic Procedures.

[Antibody](#) | [ELISA Kits](#) | [Protein](#) | [Reagents](#)