

# TAL1 (Phospho Ser122) Rabbit pAb

CatalogNo: YP0478

Orthogonal Validated 

## Key Features

### Host Species

- Rabbit

### Reactivity

- Human, Mouse

### Applications

- WB, IHC, IF, ELISA

### MW

- 45kD (Observed)

### Isotype

- IgG

## Recommended Dilution Ratios

**WB 1:500-1:2000****IHC 1:100-1:300****ELISA 1:10000****IF 1:50-200**

## Storage

**Storage\*** -15°C to -25°C/1 year (Do not lower than -25°C)**Formulation** Liquid in PBS containing 50% glycerol, 0.5% BSA and 0.02% sodium azide.

## Basic Information

**Clonality** Polyclonal

## Immunogen Information

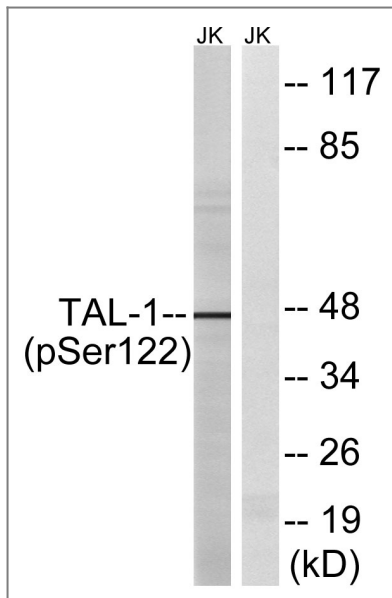
**Immunogen** The antiserum was produced against synthesized peptide derived from human TAL-1 around the phosphorylation site of Ser122. AA range: 96-145

**Specificity** Phospho-TAL1 (S122) Polyclonal Antibody detects endogenous levels of TAL1 protein only when phosphorylated at S122. The name of modified sites may be influenced by many factors, such as species (the modified site was not originally found in human samples) and the change of protein sequence (the previous protein sequence is incomplete, and the protein sequence may be prolonged with the development of protein sequencing technology). When naming, we will use the "numbers" in historical reference to keep the sites consistent with the reports. The antibody binds to the following modification sequence (lowercase letters are modification sites):QLsPP

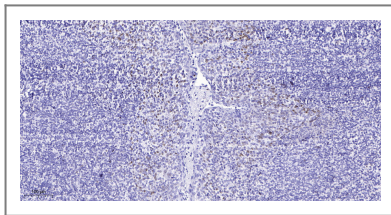
## Target Information

Gene name	TAL1		
Protein Name	T-cell acute lymphocytic leukemia protein 1		
	Organism	Gene ID	UniProt ID
	Human	<a href="#">6886</a> ;	<a href="#">P17542</a> ;
	Mouse	<a href="#">21349</a> ;	<a href="#">P22091</a> ;
Cellular Localization	Nucleus .		
Tissue specificity	Leukemic stem cell.		
Function	Alternative products:The splicing pattern is cell-lineage dependent,Disease:A chromosomal aberration involving TAL1 may be a cause of some T-cell acute lymphoblastic leukemias (T-ALL). Translocation t(1;14)(p32;q11) with T-cell receptor alpha chain (TCRA) genes.,Domain:The helix-loop-helix domain is necessary and sufficient for the interaction with DRG1.,Function:Implicated in the genesis of hemopoietic malignancies. It may play an important role in hemopoietic differentiation. Serves as a positive regulator of erythroid differentiation.,PTM:Phosphorylated on serine residues. Phosphorylation of Ser-122 is strongly stimulated by hypoxia.,PTM:Ubiquitinated; subsequent to hypoxia-dependent phosphorylation of Ser-122, ubiquitination targets the protein for rapid degradation via the ubiquitin system. This process may be characteristic for microvascular endothelial cells, since it could not be observed in large vessel endothelial cells.,similarity:Contains 1 basic helix-loop-helix (bHLH) domain.,subunit:Efficient DNA binding requires dimerization with another bHLH protein. Forms heterodimers with TCF3. Binds to the LIM domain containing protein LMO2 and to DRG1. Can assemble in a complex with LDB1 and LMO2. Component of a TAL-1 complex composed at least of CBFA2T3, LDB1, TAL1 and TCF3.,tissue specificity:Leukemic stem cell.,		

## Validation Data



Western blot analysis of lysates from Jurkat cells treated with PMA 125ng/ml 30', using TAL-1 (Phospho-Ser122) Antibody. The lane on the right is blocked with the phospho peptide.



Immunohistochemical analysis of paraffin-embedded human tonsil. 1, Antibody was diluted at 1:200(4° overnight). 2, Tris-EDTA,pH9.0 was used for antigen retrieval. 3,Secondary antibody was diluted at 1:200(room temperature, 45min).

## Contact information

Orders: [order@immunoway.com](mailto:order@immunoway.com)  
 Support: [tech@immunoway.com](mailto:tech@immunoway.com)  
 Telephone: 877-594-3616 (Toll Free), 408-747-0185  
 Website: <http://www.immunoway.com>  
 Address: 2200 Ringwood Ave San Jose, CA 95131 USA



Please scan the QR code to access additional product information:

**TAL1 (Phospho Ser122) Rabbit pAb**

For Research Use Only. Not for Use in Diagnostic Procedures.

[Antibody](#) | [ELISA Kits](#) | [Protein](#) | [Reagents](#)