

## PAK5/6 (Phospho Ser602/560) Rabbit pAb

CatalogNo: YP0475 Orthogonal Validated 

### Key Features

#### Host Species

- Rabbit

#### Reactivity

- Human, Mouse

#### Applications

- WB, ELISA

#### MW

- 75kD (Observed)

#### Isotype

- IgG

### Storage

**Storage\*** -15°C to -25°C/1 year (Do not lower than -25°C)

**Formulation** Liquid in PBS containing 50% glycerol, 0.5% BSA and 0.02% sodium azide.

### Recommended Dilution Ratios

**WB 1:500-1:2000**

**ELISA 1:20000**

**Not yet tested in other applications.**

### Basic Information

**Clonality** Polyclonal

### Immunogen Information

**Immunogen** The antiserum was produced against synthesized peptide derived from human PAK5/6 around the phosphorylation site of Ser602/Ser560. AA range:566-615

**Specificity** This antibody detects endogenous levels of PAK5/6 only when phosphorylated at Human:S602/560, Mouse:S602/561..The name of modified sites may be influenced by many factors, such as species (the modified site was not originally found in human samples) and the change of protein sequence (the previous protein sequence is incomplete, and the protein sequence may be prolonged with the development of protein sequencing technology). When naming, we will use the "numbers" in historical reference to keep the sites consistent with the reports. The antibody binds to the following modification sequence (lowercase letters are modification sites):RKSLV

## Target Information

**Gene name** PAK6/PAK7

**Protein Name** Serine/threonine-protein kinase PAK 6/7

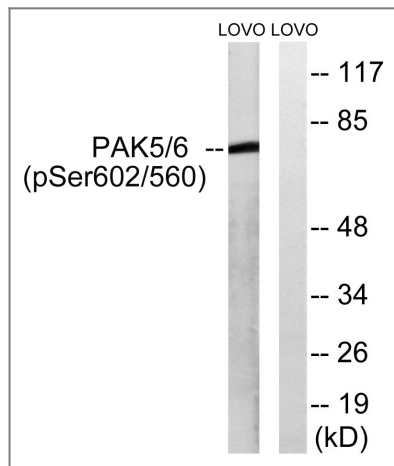
Organism	Gene ID	UniProt ID
Human	<a href="#">57144</a> ; <a href="#">56924</a> ;	<a href="#">Q9P286</a> ; <a href="#">Q9NQU5</a> ;
Mouse	<a href="#">241656</a> ; <a href="#">214230</a> ;	

**Cellular Localization** Mitochondrion. Cytoplasm. Nucleus. Shuttles between the nucleus and the mitochondria, and mitochondrial localization is essential for the role in cell survival.

**Tissue specificity** Predominantly expressed in brain.

**Function** Catalytic activity:ATP + a protein = ADP + a phosphoprotein.,Function:The activated kinase acts on a variety of targets.,PTM:Autophosphorylated when activated by CDC42/p21.,similarity:Belongs to the protein kinase superfamily. STE Ser/Thr protein kinase family. STE20 subfamily.,similarity:Contains 1 CRIB domain.,similarity:Contains 1 protein kinase domain.,subunit:Interacts tightly with GTP-bound but not GDP-bound CDC42/p21 and RAC1.,tissue specificity:Predominantly expressed in brain.,

## Validation Data



Western blot analysis of lysates from LOVO cells treated with PMA 125ng/ml 30', using PAK5/6 (Phospho-Ser602/Ser560) Antibody. The lane on the right is blocked with the phospho peptide.

## Contact information

Orders: [order@immunoway.com](mailto:order@immunoway.com)  
Support: [tech@immunoway.com](mailto:tech@immunoway.com)  
Telephone: 877-594-3616 (Toll Free), 408-747-0185  
Website: <http://www.immunoway.com>  
Address: 2200 Ringwood Ave San Jose, CA 95131 USA



Please scan the QR code to access additional product information:  
**PAK5/6 (Phospho Ser602/560) Rabbit pAb**

