

NFAT5 (Phospho Ser155) Rabbit pAb

CatalogNo: YP0474

Orthogonal Validated 

Key Features

Host Species

- Rabbit

Reactivity

- Human, Mouse

Applications

- WB, IHC

MW

- 200kD (Observed)

Isotype

- IgG

Recommended Dilution Ratios

WB 1:500-2000**IHC 1:50-300**

Storage

Storage*

-15°C to -25°C/1 year (Do not lower than -25°C)

Formulation

Liquid in PBS containing 50% glycerol, 0.5% BSA and 0.02% sodium azide.

Basic Information

Clonality

Polyclonal

Immunogen Information

Immunogen

The antiserum was produced against synthesized peptide derived from human NFAT5/TonEBP around the phosphorylation site of Ser155. AA range:121-170

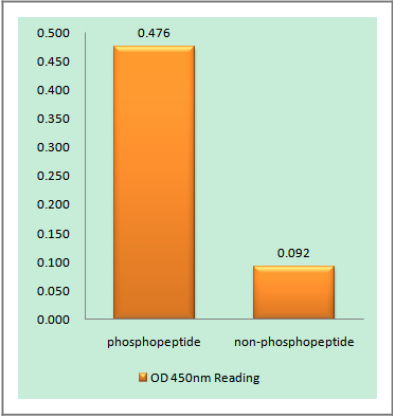
Specificity

Phospho-NFAT5 (S155) Polyclonal Antibody detects endogenous levels of NFAT5 protein only when phosphorylated at S155. The name of modified sites may be influenced by many factors, such as species (the modified site was not originally found in human samples) and the change of protein sequence (the previous protein sequence is incomplete, and the protein sequence may be prolonged with the development of protein sequencing technology). When naming, we will use the "numbers" in historical reference to keep the sites consistent with the reports. The antibody binds to the following modification sequence (lowercase letters are modification sites): DNSRM

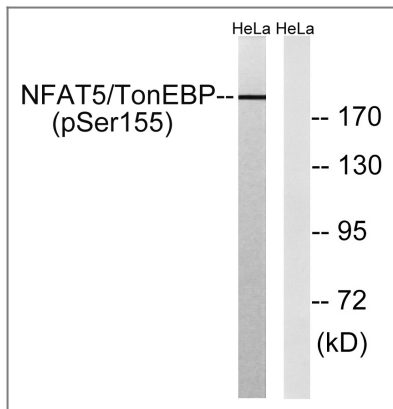
Target Information

Gene name	NFAT5		
Protein Name	Nuclear factor of activated T-cells 5		
	Organism	Gene ID	UniProt ID
	Human	10725 ;	O94916 ;
	Mouse		Q9WV30 ;
Cellular Localization	Nucleus . Cytoplasm . Nuclear distribution increases under hypertonic conditions. .		
Tissue specificity	Widely expressed, with highest levels in skeletal muscle, brain, heart and peripheral blood leukocytes.		
Function	Alternative products:Experimental confirmation may be lacking for some isoforms,Function:Plays a role in the inducible expression of genes. Regulates hypertonicity-induced cellular accumulation of osmolytes.,similarity:Contains 1 RHD (Rel-like) domain.,subunit:Does not bind with Fos and Jun transcription factors. But might be capable of forming stable dimers with DNA elements.,tissue specificity:Highest levels in skeletal muscle, brain, heart and peripheral blood leukocytes. Also expressed in placenta, lung, liver, kidney, pancreas, spleen, thymus, prostate, testis, ovary, small intestine and colon.,		

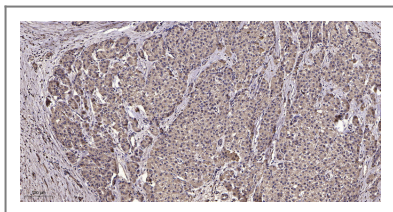
Validation Data



Enzyme-Linked Immunosorbent Assay (Phospho-ELISA) for Immunogen Phosphopeptide (Phospho-left) and Non-Phosphopeptide (Phospho-right), using NFAT5/TonEBP (Phospho-Ser155) Antibody



Western blot analysis of lysates from HeLa cells treated with forskolin 40nM 30', using NFAT5/TonEBP (Phospho-Ser155) Antibody. The lane on the right is blocked with the phospho peptide.



Immunohistochemical analysis of paraffin-embedded human liver cancer. 1, Antibody was diluted at 1:200(4° overnight). 2, Tris-EDTA,pH9.0 was used for antigen retrieval. 3,Secondary antibody was diluted at 1:200(room temperature, 45min).

Contact information

Orders: order@immunoway.com
 Support: tech@immunoway.com
 Telephone: 877-594-3616 (Toll Free), 408-747-0185
 Website: <http://www.immunoway.com>
 Address: 2200 Ringwood Ave San Jose, CA 95131 USA



Please scan the QR code to access additional product information:
NFAT5 (Phospho-Ser155) Rabbit pAb

For Research Use Only. Not for Use in Diagnostic Procedures.

[Antibody](#) | [ELISA Kits](#) | [Protein](#) | [Reagents](#)