

## KV2.1 (Phospho Ser805) Rabbit pAb

CatalogNo: YP0472 Orthogonal Validated 

### Key Features

#### Host Species

- Rabbit

#### Reactivity

- Human, Mouse, Rat

#### Applications

- WB, ELISA, IHC

#### MW

- 96kD (Observed)

#### Isotype

- IgG

### Storage

**Storage\*** -15°C to -25°C/1 year (Do not lower than -25°C)

**Formulation** Liquid in PBS containing 50% glycerol, 0.5% BSA and 0.02% sodium azide.

### Recommended Dilution Ratios

**WB 1:500-2000**

**IHC 1:50-300**

**ELISA 1:2000-20000**

### Basic Information

**Clonality** Polyclonal

### Immunogen Information

**Immunogen** The antiserum was produced against synthesized peptide derived from human Kv2.1 around the phosphorylation site of Ser805. AA range: 771-820

**Specificity** Phospho-KV2.1 (S805) Polyclonal Antibody detects endogenous levels of KV2.1 protein only when phosphorylated at S805. The name of modified sites may be influenced by many factors, such as species (the modified site was not originally found in human samples) and the change of protein sequence (the previous protein sequence is incomplete, and the protein sequence may be prolonged with the development of protein sequencing technology). When naming, we will use the "numbers" in historical reference to keep the sites consistent with the reports. The antibody binds to the following modification sequence (lowercase letters are modification sites): PTSPK

## Target Information

**Gene name** KCNB1

**Protein Name** Potassium voltage-gated channel subfamily B member 1

Organism	Gene ID	UniProt ID
Human	<a href="#">3745</a> ;	<a href="#">Q14721</a> ;
Mouse	<a href="#">16500</a> ;	<a href="#">Q03717</a> ;
Rat	<a href="#">25736</a> ;	<a href="#">P15387</a> ;

### Cellular Localization

Cell membrane . Perikaryon . Cell projection, axon . Cell projection, dendrite . Membrane; Multi-pass membrane protein. Cell junction, synapse, postsynaptic cell membrane . Cell junction, synapse . Cell junction, synapse, synaptosome . Lateral cell membrane . Cell membrane, sarcolemma . Localizes to high-density somatodendritic clusters and non-clustered sites on the surface of neocortical and hippocampal pyramidal neurons in a cortical actin cytoskeleton-dependent manner (PubMed:24477962). Localizes also to high-density clusters in the axon initial segment (AIS), at ankyrin-G-deficient sites, on the surface of neocortical and hippocampal pyramidal neurons (PubMed:24477962). KCNB1-containing AIS clusters localize either in close apposition to smooth endoplasmic reticulum cisternal organelles or with GABA-A receptor-containing synapses of hippocampal and cortical pyramidal neurons, respectively (PubMed:24477962). Localizes to high-density clusters on the cell surface of atrial and ventricular myocytes and at the lateral plasma membrane in epithelial cells. Localizes both to the axial and transverse tubules (T tubule) and sarcolemma in ventricular myocytes. Associated with lipid raft domains. In cortical neurons, apoptotic injuries induce de novo plasma membrane insertion in a SNARE-dependent manner causing an apoptotic potassium current surge. .

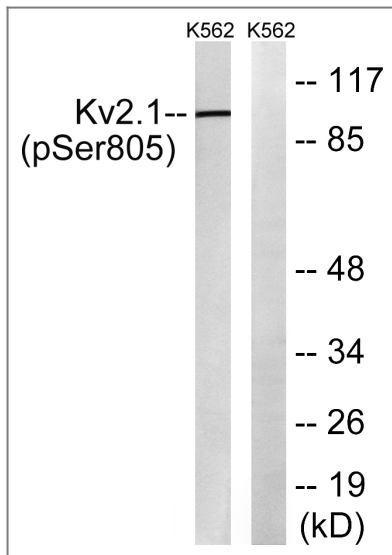
### Tissue specificity

Expressed in neocortical pyramidal cells (PubMed:24477962). Expressed in pancreatic beta cells (at protein level) (PubMed:12403834, PubMed:14988243). Expressed in brain, heart, lung, liver, colon, kidney and adrenal gland (PubMed:19074135). Expressed in the cortex, amygdala, cerebellum, pons, thalamus, hypothalamus, hippocampus and substantia nigra (PubMed:19074135).

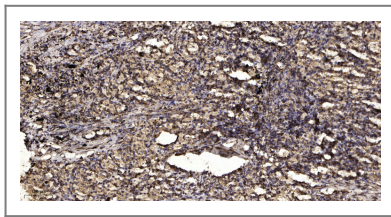
### Function

Domain:The segment S4 is probably the voltage-sensor and is characterized by a series of positively charged amino acids at every third position.,Domain:The tail may be important in modulation of channel activity and/or targeting of the channel to specific subcellular compartments.,Function:Mediates the voltage-dependent potassium ion permeability of excitable membranes. Channels open or close in response to the voltage difference across the membrane, letting potassium ions pass in accordance with their electrochemical gradient.,PTM:Highly phosphorylated on serine residues in the C-terminal. Differential phosphorylation on a subset of serines allows graded activity-dependent regulation of channel gating. Phosphorylation on Ser-457, Ser-541, Ser-567, Ser-607, Ser-656 and Ser-720 as well as the N-terminal Ser-15 are all regulated by calcineurin-mediated dephosphorylation. Particularly, Ser-607 and Tyr-128 are significant sites of voltage-gated regulation through phosphorylation/ dephosphorylation activities. Tyr-128 can be dephosphorylated by PTPalpha and cyt-PTPepsilon. Phosphorylation levels on Ser-607 are supersensitive to neuronal activity. Phosphorylation on Ser-567 is reduced during postnatal development with low levels at P2 and P5. Levels then increase to reach adult levels by P14. Phosphorylation levels on Ser-564 and Ser-607 are greatly reduced during seizures, by 40% and 85% respectively.,similarity:Belongs to the potassium channel family. B (Shab) subfamily.,subunit:Heteromultimer with KCNG2, KCNG3, KCNG4, KCNS1, KCNS2, KCNS3 and KCNV2.,

## Validation Data



Western blot analysis of lysates from K562 cells treated with TNF 200ng/ml 30', using Kv2.1 (Phospho-Ser805) Antibody. The lane on the right is blocked with the phospho peptide.



Immunohistochemical analysis of paraffin-embedded human Squamous cell carcinoma of lung. 1, Antibody was diluted at 1:200(4° overnight). 2, Tris-EDTA,pH9.0 was used for antigen retrieval. 3,Secondary antibody was diluted at 1:200(room temperature, 45min).

## Contact information

Orders: [order@immunoway.com](mailto:order@immunoway.com)  
Support: [tech@immunoway.com](mailto:tech@immunoway.com)  
Telephone: 877-594-3616 (Toll Free), 408-747-0185  
Website: <http://www.immunoway.com>  
Address: 2200 Ringwood Ave San Jose, CA 95131 USA



Please scan the QR code to access additional product information:  
**KV2.1 (Phospho Ser805) Rabbit pAb**

For Research Use Only. Not for Use in Diagnostic Procedures.

[Antibody](#) | [ELISA Kits](#) | [Protein](#) | [Reagents](#)