

## 4.1R (Phospho Tyr660) Rabbit pAb

CatalogNo: YP0468 **Orthogonal Validated** 

### Key Features

#### Host Species

- Rabbit

#### Reactivity

- Human, Mouse

#### Applications

- WB, IHC, IF, ELISA

#### MW

- 60kD (Observed)

#### Isotype

- IgG

### Storage

**Storage\*** -15°C to -25°C/1 year (Do not lower than -25°C)

**Formulation** Liquid in PBS containing 50% glycerol, 0.5% BSA and 0.02% sodium azide.

### Recommended Dilution Ratios

**WB 1:500-1:2000**

**IHC 1:100-1:300**

**ELISA 1:5000**

**IF 1:50-200**

### Basic Information

**Clonality** Polyclonal

### Immunogen Information

**Immunogen** The antiserum was produced against synthesized peptide derived from human EPB41 around the phosphorylation site of Tyr660/418. AA range: 626-675

## Specificity

Phospho-4.1R (Y660) Polyclonal Antibody detects endogenous levels of 4.1R protein only when phosphorylated at Y660. The name of modified sites may be influenced by many factors, such as species (the modified site was not originally found in human samples) and the change of protein sequence (the previous protein sequence is incomplete, and the protein sequence may be prolonged with the development of protein sequencing technology). When naming, we will use the "numbers" in historical reference to keep the sites consistent with the reports. The antibody binds to the following modification sequence (lowercase letters are modification sites):NlyIR

## Target Information

**Gene name** EPB41

**Protein Name** Protein 4.1

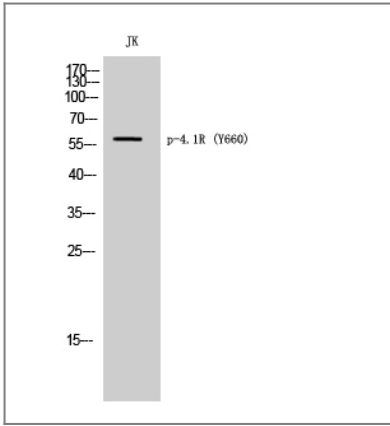
Organism	Gene ID	UniProt ID
Human	<a href="#">2035</a> ;	<a href="#">P11171</a> ;
Mouse	<a href="#">269587</a> ;	<a href="#">P48193</a> ;

**Cellular Localization** Cytoplasm, cytoskeleton . Cytoplasm, cell cortex . Nucleus .

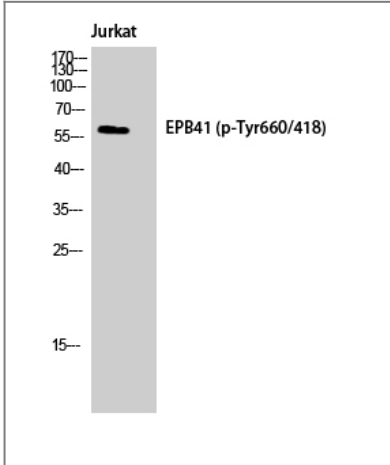
**Tissue specificity** Brain,PCR rescued clones,Reticulocyte,Spleen,

**Function** Disease:Defects in EPB41 are a cause of hereditary pyropoikilocytosis (HPP) [MIM:266140]. HPP is an autosomal recessive hematologic disorder characterized by hemolytic anemia, microspherocytosis, poikilocytosis, and an unusual thermal sensitivity of red cells.,Disease:Defects in EPB41 are the cause of elliptocytosis type 1 (EL1) [MIM:611804]. EL1 is a Rhesus-linked form of hereditary elliptocytosis, a genetically heterogeneous, autosomal dominant, hematologic disorder. It is characterized by variable hemolytic anemia and elliptical or oval red cell shape.,Function:Protein 4.1 is a major structural element of the erythrocyte membrane skeleton. It plays a key role in regulating membrane physical properties of mechanical stability and deformability by stabilizing spectrin-actin interaction. Recruits DLG1 to membranes.,PTM:O-glycosylated; contains N-acetylglucosamine side chains in the C-terminal domain.,PTM:Phosphorylated at multiple sites by different protein kinases and each phosphorylation event selectively modulates the protein's functions.,PTM:Phosphorylation on Tyr-660 reduces the ability of 4.1 to promote the assembly of the spectrin/actin/4.1 ternary complex.,similarity:Contains 1 FERM domain.,subunit:Binds with a high affinity to glycophorin and with lower affinity to band III protein. Associates with the nuclear mitotic apparatus. Binds calmodulin, CENPJ and DLG1. Also found to associate with contractile apparatus and tight junctions.,

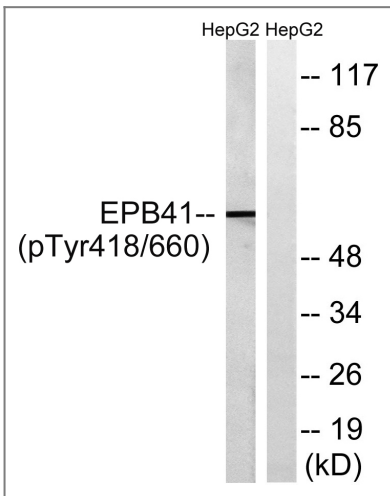
## Validation Data



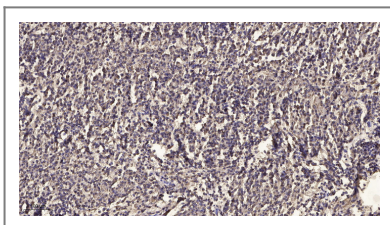
Western Blot analysis of JK cells using Phospho-4.1R (Y660) Polyclonal Antibody



Western Blot analysis of Jurkat cells using Phospho-4.1R (Y660) Polyclonal Antibody



Western blot analysis of lysates from HepG2 cells treated with PMA 125ng/ml 30', using EPB41 (Phospho-Tyr660/418) Antibody. The lane on the right is blocked with the phospho peptide.



Immunohistochemical analysis of paraffin-embedded human meningioma. 1, Antibody was diluted at 1:200(4° overnight). 2, Tris-EDTA,pH9.0 was used for antigen retrieval. 3,Secondary antibody was diluted at 1:200(room temperature, 45min).

## Contact information

Orders: order@immunoway.com  
Support: tech@immunoway.com  
Telephone: 877-594-3616 (Toll Free), 408-747-0185  
Website: http://www.immunoway.com  
Address: 2200 Ringwood Ave San Jose, CA 95131 USA



Please scan the QR code to access additional product information:  
**4.1R (Phospho Tyr660) Rabbit pAb**

---

For Research Use Only. Not for Use in Diagnostic Procedures.

[Antibody](#) | [ELISA Kits](#) | [Protein](#) | [Reagents](#)