

Claudin-6 (Phospho Tyr219) Rabbit pAb

CatalogNo: YP0465 **Orthogonal Validated** 

Key Features

Host Species

- Rabbit

Reactivity

- Human, Mouse

Applications

- WB, IHC, IF, ELISA

MW

- 23kD (Observed)

Isotype

- IgG

Storage

Storage* -15°C to -25°C/1 year (Do not lower than -25°C)**Formulation** Liquid in PBS containing 50% glycerol, 0.5% BSA and 0.02% sodium azide.

Recommended Dilution Ratios

WB 1:500-1:2000**IHC 1:100-1:300****ELISA 1:5000****IF 1:50-200**

Basic Information

Clonality Polyclonal

Immunogen Information

Immunogen The antiserum was produced against synthesized peptide derived from human Claudin 6 around the phosphorylation site of Tyr219. AA range:171-220

Specificity

Phospho-Claudin-6 (Y219) Polyclonal Antibody detects endogenous levels of Claudin-6 protein only when phosphorylated at Y219. The name of modified sites may be influenced by many factors, such as species (the modified site was not originally found in human samples) and the change of protein sequence (the previous protein sequence is incomplete, and the protein sequence may be prolonged with the development of protein sequencing technology). When naming, we will use the "numbers" in historical reference to keep the sites consistent with the reports. The antibody binds to the following modification sequence (lowercase letters are modification sites):TKNyV

Target Information

Gene name CLDN6

Protein Name Claudin-6

Organism	Gene ID	UniProt ID
Human	9074;	P56747;
Mouse	54419;	Q9Z262;

Cellular Localization

Cell junction, tight junction . Cell membrane ; Multi-pass membrane protein .

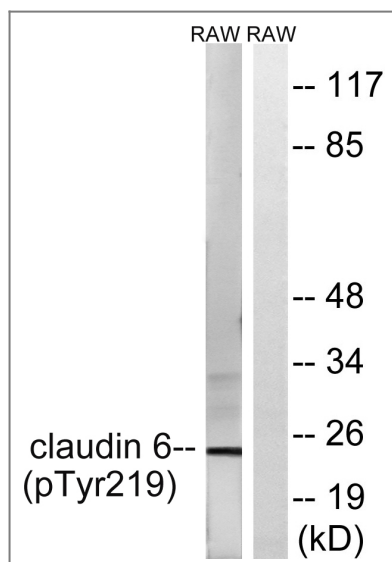
Tissue specificity

Expressed in the liver, in peripheral blood mononuclear cells and hepatocarcinoma cell lines.

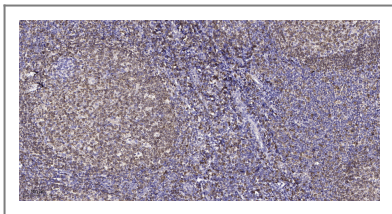
Function

Function:Plays a major role in tight junction-specific obliteration of the intercellular space.,similarity:Belongs to the claudin family.,subunit:Directly interacts with TJP1/ZO-1, TJP2/ZO-2 and TJP3/ZO-3.,

Validation Data



Western blot analysis of lysates from RAW264.7 cells treated with UV 5', using Claudin 6 (Phospho-Tyr219) Antibody. The lane on the right is blocked with the phospho peptide.



Immunohistochemical analysis of paraffin-embedded human tonsil. 1, Antibody was diluted at 1:200(4° overnight). 2, Tris-EDTA,pH9.0 was used for antigen retrieval. 3,Secondary antibody was diluted at 1:200(room temperature, 45min).

| Contact information

Orders: order@immunoway.com
Support: tech@immunoway.com
Telephone: 877-594-3616 (Toll Free), 408-747-0185
Website: <http://www.immunoway.com>
Address: 2200 Ringwood Ave San Jose, CA 95131 USA



Please scan the QR code to access additional product information:
Claudin-6 (Phospho Tyr219) Rabbit pAb

For Research Use Only. Not for Use in Diagnostic Procedures.

[Antibody](#) | [ELISA Kits](#) | [Protein](#) | [Reagents](#)