

C/EBP α (Phospho Thr230) Rabbit pAb

CatalogNo: YP0463

Key Features

Host Species

- Rabbit

Reactivity

- Human, Mouse, Rat

Applications

- WB, ELISA

MW

- 42kD, also have 30kD isform (Observed)

Isotype

- IgG

Storage

Storage* -15°C to -25°C/1 year (Do not lower than -25°C)

Formulation Liquid in PBS containing 50% glycerol, 0.5% BSA and 0.02% sodium azide.

Recommended Dilution Ratios

WB 1:500-1:2000

ELISA 1:10000

Not yet tested in other applications.

Basic Information

Clonality Polyclonal

Immunogen Information

Immunogen Synthesized phospho-peptide around the phosphorylation site of human C/EBP α (phospho Thr230)

Specificity Phospho-C/EBP α (T230) Polyclonal Antibody detects endogenous levels of C/EBP α protein only when phosphorylated at T230. The name of modified sites may be influenced by many factors, such as species (the modified site was not originally found in human samples) and the change of protein sequence (the previous protein sequence is incomplete, and the protein sequence may be prolonged with the development of protein sequencing technology). When naming, we will use the "numbers" in historical reference to keep the sites consistent with the reports. The antibody binds to the following modification sequence (lowercase letters are modification sites): PPTPV

Target Information

Gene name CEBPA

Protein Name CCAAT/enhancer-binding protein alpha

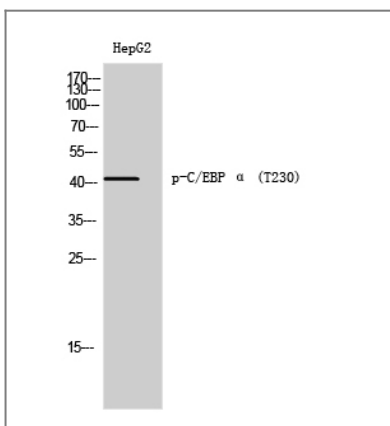
Organism	Gene ID	UniProt ID
Human	1050 ;	P49715 ;
Mouse	12606 ;	P53566 ;
Rat	24252 ;	P05554 ;

Cellular Localization Nucleus .; [Isoform 4]: Nucleus, nucleolus .

Tissue specificity Liver,Pancreas,Umbilical cord,White Matter pool- 5 brain tissues- f

Function Function:C/EBP is a DNA-binding protein that recognizes two different motifs: the CCAAT homology common to many promoters and the enhanced core homology common to many enhancers.,similarity:Belongs to the bZIP family.,similarity:Belongs to the bZIP family. C/EBP subfamily.,similarity:Contains 1 bZIP domain.,subunit:Binds DNA as a dimer and can form stable heterodimers with C/EBP beta and gamma. Interacts with UBN1. Interacts with HBV protein X.,

Validation Data



Western Blot analysis of HepG2 cells using Phospho-C/EBP α (T230) Polyclonal Antibody cells nucleus extracted by Minute TM Cytoplasmic and Nuclear Fractionation kit (SC-003, Inventbiotech, MN, USA).

Contact information

Orders: order@immunoway.com
Support: tech@immunoway.com
Telephone: 877-594-3616 (Toll Free), 408-747-0185
Website: <http://www.immunoway.com>
Address: 2200 Ringwood Ave San Jose, CA 95131 USA



Please scan the QR code to access additional product information:
C/EBP α (Phospho Thr230) Rabbit pAb

