

## FGFR1/2 (Phospho Tyr463/466) Rabbit pAb

CatalogNo: YP0452

### Key Features

#### Host Species

- Rabbit

#### Reactivity

- Human, Mouse, Rat

#### Applications

- WB, ELISA

#### MW

- 120kD (Calculated)  
full length 120-140kD, FOP-FGFR1  
90kD (Observed)

#### Isotype

- IgG

### Storage

**Storage\*** -15°C to -25°C/1 year (Do not lower than -25°C)

**Formulation** Liquid in PBS containing 50% glycerol, 0.5% BSA and 0.02% sodium azide.

### Recommended Dilution Ratios

**WB 1:500-1:2000**

**ELISA 1:10000**

**Not yet tested in other applications.**

### Basic Information

**Clonality** Polyclonal

### Immunogen Information

**Immunogen** Synthesized phospho-peptide around the phosphorylation site of human Flg/Bek (phospho Tyr463/466)

## Specificity

This antibody detects endogenous levels of FGF Receptor 1/2 only when phosphorylated at Human:Y463/466, Mouse:Y463/466, Rat:Y463. The name of modified sites may be influenced by many factors, such as species (the modified site was not originally found in human samples) and the change of protein sequence (the previous protein sequence is incomplete, and the protein sequence may be prolonged with the development of protein sequencing technology). When naming, we will use the "numbers" in historical reference to keep the sites consistent with the reports. The antibody binds to the following modification sequence (lowercase letters are modification sites):SEyEL

## Target Information

**Gene name** FGFR1/FGFR2

**Protein Name** Fibroblast growth factor receptor 1/2

Organism	Gene ID	UniProt ID
Human	<a href="#">2260</a> ; <a href="#">2263</a> ;	<a href="#">P11362</a> ; <a href="#">P21802</a> ;
Mouse	<a href="#">14182</a> ; <a href="#">14183</a> ;	<a href="#">P16092</a> ;
Rat	<a href="#">79114</a> ;	<a href="#">Q04589</a> ;

## Cellular Localization

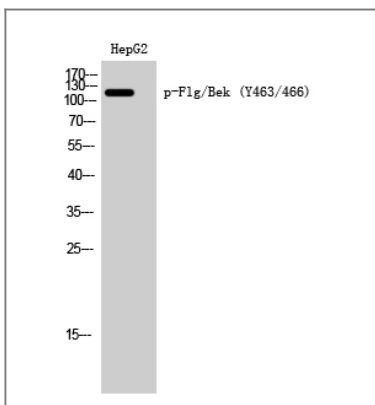
Cell membrane; Single-pass type I membrane protein. Nucleus. Cytoplasm, cytosol. Cytoplasmic vesicle. After ligand binding, both receptor and ligand are rapidly internalized. Can translocate to the nucleus after internalization, or by translocation from the endoplasmic reticulum or Golgi apparatus to the cytosol, and from there to the nucleus.

**Tissue specificity** Detected in astrocytoma, neuroblastoma and adrenal cortex cell lines. Some isoforms are detected in foreskin fibroblast cell lines, however isoform 17, isoform 18 and isoform 19 are not detected in these cells.

## Function

Receptor for basic fibroblast growth factor. Receptor for FGF23 in the presence of KL (By similarity). A shorter form of the receptor could be a receptor for FGF1 (aFGF). Receptor for acidic and basic fibroblast growth factors.

## Validation Data



Western Blot analysis of HepG2 cells using Phospho-Flg/Bek (Y463/466) Polyclonal Antibody

## | Contact information

Orders: [order@immunoway.com](mailto:order@immunoway.com)  
Support: [tech@immunoway.com](mailto:tech@immunoway.com)  
Telephone: 877-594-3616 (Toll Free), 408-747-0185  
Website: <http://www.immunoway.com>  
Address: 2200 Ringwood Ave San Jose, CA 95131 USA



Please scan the QR code to access additional product information:  
**FGFR1/2 (Phospho Tyr463/466) Rabbit pAb**

---

For Research Use Only. Not for Use in Diagnostic Procedures.

[Antibody](#) | [ELISA Kits](#) | [Protein](#) | [Reagents](#)