

## Rsk-1/2/3/4 (Phospho Ser221/227/218/232) Rabbit pAb

CatalogNo: YP0436

Orthogonal Validated 

### Key Features

**Host Species**

- Rabbit

**Reactivity**

- Human, Mouse

**Applications**

- WB, ELISA

**MW**

- 85kD (Observed)

**Isotype**

- IgG

### Recommended Dilution Ratios

**WB 1:500-1:2000****ELISA 1:40000****Not yet tested in other applications.**

### Storage

**Storage\***

-15°C to -25°C/1 year (Do not lower than -25°C)

**Formulation**

Liquid in PBS containing 50% glycerol, 0.5% BSA and 0.02% sodium azide.

### Basic Information

**Clonality**

Polyclonal

### Immunogen Information

**Immunogen**

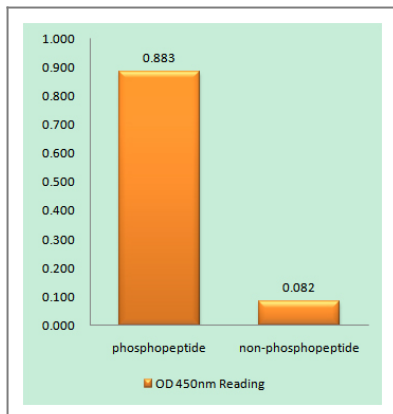
The antiserum was produced against synthesized peptide derived from human RSK1/2/3/4 around the phosphorylation site of Ser221/227/S218/232. AA range: 191-240

**Specificity** This antibody detects endogenous levels of RSK1/2/3/4 only when phosphorylated at Human:S221/227/S218/232, Mouse:S221/227/S218/252..The name of modified sites may be influenced by many factors, such as species (the modified site was not originally found in human samples) and the change of protein sequence (the previous protein sequence is incomplete, and the protein sequence may be prolonged with the development of protein sequencing technology). When naming, we will use the "numbers" in historical reference to keep the sites consistent with the reports. The antibody binds to the following modification sequence (lowercase letters are modification sites):AYsFC

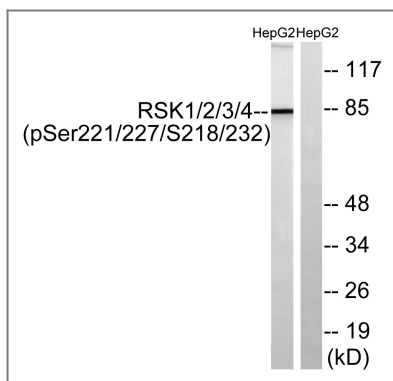
## | Target Information

Gene name	RPS6KA1		
Protein Name	Ribosomal protein S6 kinase alpha-1		
	Organism	Gene ID	UniProt ID
	Human	<a href="#">6195</a> ; <a href="#">6197</a> ; <a href="#">6196</a> ; <a href="#">27330</a> ;	<a href="#">Q15418</a> ; <a href="#">P51812</a> ; <a href="#">Q15349</a> ; <a href="#">Q9UK32</a> ;
	Mouse	<a href="#">110651</a> ; <a href="#">20112</a> ; <a href="#">67071</a> ;	
Cellular Localization	Nucleus. Cytoplasm.		
Tissue specificity	Colon,Epithelium,		
Function	Catalytic activity:ATP + a protein = ADP + a phosphoprotein.,Caution:The sequence shown here is derived from an Ensembl automatic analysis pipeline and should be considered as preliminary data.,cofactor:Magnesium.,enzyme regulation:Activated by multiple phosphorylations on threonine and serine residues.,Function:Serine/threonine kinase that may play a role in mediating the growth-factor and stress induced activation of the transcription factor CREB.,PTM:Autophosphorylated on Ser-380, as part of the activation process.,similarity:Belongs to the protein kinase superfamily.,similarity:Belongs to the protein kinase superfamily. AGC Ser/Thr protein kinase family. S6 kinase subfamily.,similarity:Contains 1 AGC-kinase C-terminal domain.,similarity:Contains 2 protein kinase domains.,subunit:Forms a complex with either ERK1 or ERK2 in quiescent cells. Transiently dissociates following mitogenic stimulation.,		

## | Validation Data



Enzyme-Linked Immunosorbent Assay (Phospho-ELISA) for Immunogen Phosphopeptide (Phospho-left) and Non-Phosphopeptide (Phospho-right), using RSK1/2/3/4 (Phospho-Ser221/227/S218/232) Antibody



Western blot analysis of lysates from HepG2 cells treated with EGF 200ng/ml 30', using RSK1/2/3/4 (Phospho-Ser221/227/S218/232) Antibody. The lane on the right is blocked with the phospho peptide.

## Contact information

Orders: [order@immunoway.com](mailto:order@immunoway.com)  
 Support: [tech@immunoway.com](mailto:tech@immunoway.com)  
 Telephone: 877-594-3616 (Toll Free), 408-747-0185  
 Website: <http://www.immunoway.com>  
 Address: 2200 Ringwood Ave San Jose, CA 95131 USA



Please scan the QR code to access additional product information:

**Rsk-1/2/3/4 (Phospho Ser221/227/218/232) Rabbit pAb**

For Research Use Only. Not for Use in Diagnostic Procedures.

[Antibody](#) | [ELISA Kits](#) | [Protein](#) | [Reagents](#)