

Intestinal Cell Kinase (Phospho Tyr159) Rabbit pAb

CatalogNo: YP0421 **Orthogonal Validated** 

Key Features

Host Species

- Rabbit

Reactivity

- Human, Mouse, Rat

Applications

- WB, ELISA, IHC

MW

- 71kD (Observed)

Isotype

- IgG

Storage

Storage* -15°C to -25°C/1 year (Do not lower than -25°C)**Formulation** Liquid in PBS containing 50% glycerol, 0.5% BSA and 0.02% sodium azide.

Recommended Dilution Ratios

WB 1:500-2000**IHC 1:50-300****ELISA 1:2000-20000**

Basic Information

Clonality Polyclonal

Immunogen Information

Immunogen The antiserum was produced against synthesized peptide derived from human ICK around the phosphorylation site of Tyr159. AA range:125-174

Specificity Phospho-Intestinal Cell Kinase (Y159) Polyclonal Antibody detects endogenous levels of Intestinal Cell Kinase protein only when phosphorylated at Y159. The name of modified sites may be influenced by many factors, such as species (the modified site was not originally found in human samples) and the change of protein sequence (the previous protein sequence is incomplete, and the protein sequence may be prolonged with the development of protein sequencing technology). When naming, we will use the "numbers" in historical reference to keep the sites consistent with the reports. The antibody binds to the following modification sequence (lowercase letters are modification sites):TDyVS

| Target Information

Gene name ICK

Protein Name Serine/threonine-protein kinase ICK

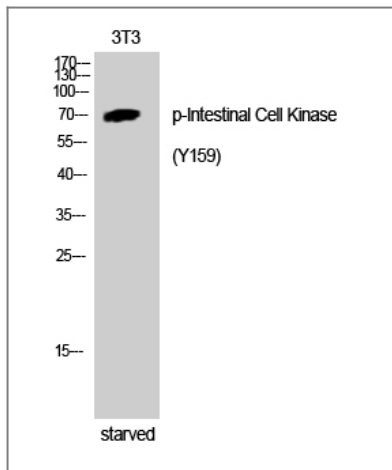
Organism	Gene ID	UniProt ID
Human	22858 ;	Q9UPZ9 ;
Mouse	56542 ;	Q9JKV2 ;
Rat	84411 ;	Q62726 ;

Cellular Localization Nucleus . Cytoplasm, cytosol . Cell projection, cilium . Cytoplasm, cytoskeleton, cilium basal body . Also found at the ciliary tip (PubMed:24797473). Nuclear localization has been observed with a GFP-tagged construct in transfected HeLa cells (PubMed:12103360, PubMed:19185282). . ; [Isoform 2]: Cytoplasm . Predominant cytoplasmic localization has been observed with a N-terminally GFP-tagged construct. .

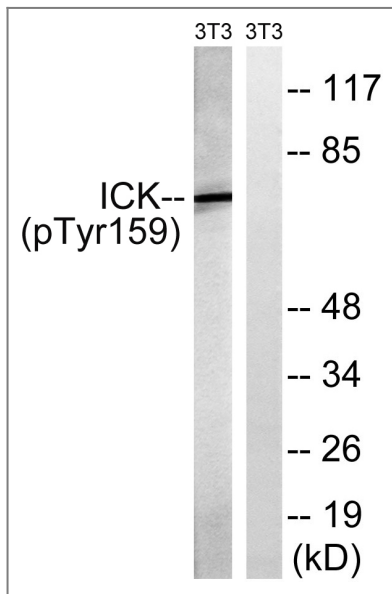
Tissue specificity Expressed in heart, brain, placenta, pancreas, thymus, prostate, testis, ovary, small intestine and colon, with highest levels in placenta and testis. Not detected in spleen. Also expressed in many cancer cell lines.

Function Catalytic activity:ATP + a protein = ADP + a phosphoprotein.,cofactor:Magnesium.,Disease:Defects in ICK are the cause of endocrine-cerebroosteodysplasia (ECO) [MIM:612651]. ECO is a previously unidentified neonatal lethal recessive disorder with multiple anomalies involving the endocrine, cerebral, and skeletal systems.,Function:May play a key role in the development of multiple organ systems and particularly in cardiac development.,PTM:Autophosphorylated on serine and threonine residues. May play a role in enzyme activation.,similarity:Belongs to the protein kinase superfamily.,similarity:Belongs to the protein kinase superfamily. CMGC Ser/Thr protein kinase family. CDC2/CDKX subfamily.,similarity:Contains 1 protein kinase domain.,subcellular location:Nuclear localization has been observed with a GFP-tagged construct in transfected HeLa cells (PubMed:12103360). Cytosolic localization was shown in rat embryonic cardiomyocytes by immunostaining (PubMed:8570168).,tissue specificity:Expressed in heart, brain, placenta, pancreas, thymus, prostate, testis, ovary, small intestine and colon, with highest levels in placenta and testis. Not detected in spleen. Also expressed in many cancer cell lines.,

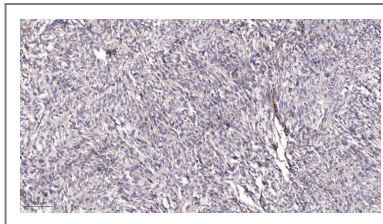
Validation Data



Western Blot analysis of 3T3 cells using Phospho-Intestinal Cell Kinase (Y159) Polyclonal Antibody



Western blot analysis of lysates from NIH/3T3 cells treated with starved 24h, using ICK (Phospho-Tyr159) Antibody. The lane on the right is blocked with the phospho peptide.



Immunohistochemical analysis of paraffin-embedded human Colon cancer. 1, Antibody was diluted at 1:200(4° overnight). 2, Tris-EDTA,pH9.0 was used for antigen retrieval. 3,Secondary antibody was diluted at 1:200(room temperature, 45min).

Contact information

Orders: order@immunoway.com
Support: tech@immunoway.com
Telephone: 877-594-3616 (Toll Free), 408-747-0185
Website: <http://www.immunoway.com>
Address: 2200 Ringwood Ave San Jose, CA 95131 USA



Please scan the QR code to access additional product information:
Intestinal Cell Kinase (Phospho Tyr159) Rabbit pAb

