

RGS16 (Phospho Tyr168) Rabbit pAb

CatalogNo: YP0397 Orthogonal Validated 

Key Features

Host Species

- Rabbit

Reactivity

- Human, Mouse, Rat, Monkey

Applications

- WB, ELISA, IHC

MW

- 30kD (Observed)

Isotype

- IgG

Storage

Storage* -15°C to -25°C/1 year (Do not lower than -25°C)

Formulation Liquid in PBS containing 50% glycerol, 0.5% BSA and 0.02% sodium azide.

Recommended Dilution Ratios

WB 1:500-2000

IHC 1:50-300

ELISA 1:2000-20000

Basic Information

Clonality Polyclonal

Immunogen Information

Immunogen The antiserum was produced against synthesized peptide derived from human RGS16 around the phosphorylation site of Tyr168. AA range:141-190

Specificity Phospho-RGS16 (Y168) Polyclonal Antibody detects endogenous levels of RGS16 protein only when phosphorylated at Y168. The name of modified sites may be influenced by many factors, such as species (the modified site was not originally found in human samples) and the change of protein sequence (the previous protein sequence is incomplete, and the protein sequence may be prolonged with the development of protein sequencing technology). When naming, we will use the "numbers" in historical reference to keep the sites consistent with the reports. The antibody binds to the following modification sequence (lowercase letters are modification sites):DSyPR

Target Information

Gene name RGS16

Protein Name Regulator of G-protein signaling 16

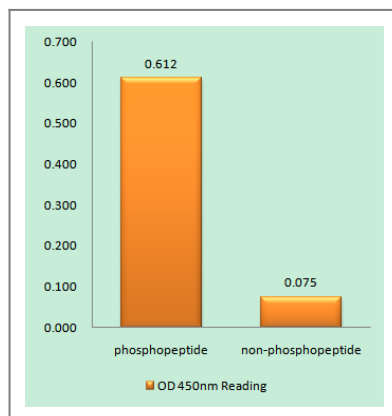
Organism	Gene ID	UniProt ID
Human	6004;	O15492;
Mouse	19734;	P97428;
Rat		P56700;

Cellular Localization Membrane ; Lipid-anchor .

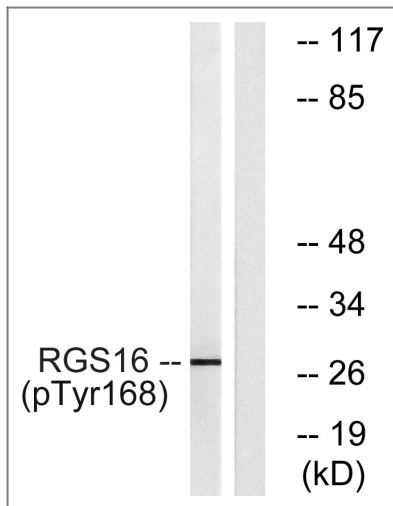
Tissue specificity Abundantly expressed in retina with lower levels of expression in most other tissues.

Function Function:Inhibits signal transduction by increasing the GTPase activity of G protein alpha subunits thereby driving them into their inactive GDP-bound form. Binds to G(i)-alpha and G(o)-alpha, but not to G(s)-alpha. May play a role in regulating the kinetics of signaling in the phototransduction cascade.,PTM:Palmitoylated on Cys-2 and/or Cys-12.,PTM:Phosphorylation on Tyr-168 upon EGFR stimulation. Enhanced GTPase accelerating (GAP) activity on G(i)-alpha.,similarity:Contains 1 RGS domain.,tissue specificity:Abundantly expressed in retina with lower levels of expression in most other tissues.,

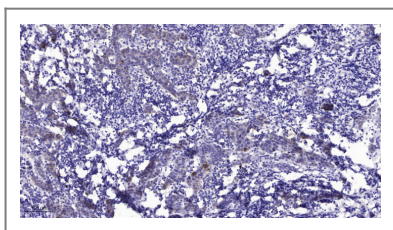
Validation Data



Enzyme-Linked Immunosorbent Assay (Phospho-ELISA) for Immunogen Phosphopeptide (Phospho-left) and Non-Phosphopeptide (Phospho-right), using RGS16 (Phospho-Tyr168) Antibody



Western blot analysis of lysates from COS7 cells treated with heat shock, using RGS16 (Phospho-Tyr168) Antibody. The lane on the right is blocked with the phospho peptide.



Immunohistochemical analysis of paraffin-embedded human Breast cancer. 1, Antibody was diluted at 1:200(4° overnight). 2, Tris-EDTA,pH9.0 was used for antigen retrieval. 3,Secondary antibody was diluted at 1:200(room temperature, 45min).

Contact information

Orders: order@immunoway.com
 Support: tech@immunoway.com
 Telephone: 877-594-3616 (Toll Free), 408-747-0185
 Website: <http://www.immunoway.com>
 Address: 2200 Ringwood Ave San Jose, CA 95131 USA



Please scan the QR code to access additional product information:
RGS16 (Phospho Tyr168) Rabbit pAb

For Research Use Only. Not for Use in Diagnostic Procedures.

[Antibody](#) | [ELISA Kits](#) | [Protein](#) | [Reagents](#)