

Casein Kinase II α (Phospho Tyr255) Rabbit pAb

CatalogNo: YP0391

Key Features

Host Species

- Rabbit

Reactivity

- Human, Mouse, Rat

Applications

- WB, IHC, IF, ELISA

MW

- 45kD (Observed)

Isotype

- IgG

Storage

Storage* -15°C to -25°C/1 year (Do not lower than -25°C)

Formulation Liquid in PBS containing 50% glycerol, 0.5% BSA and 0.02% sodium azide.

Recommended Dilution Ratios

WB 1:500-1:2000

IHC 1:100-1:300

ELISA 1:10000

IF 1:50-200

Basic Information

Clonality Polyclonal

Immunogen Information

Immunogen The antiserum was produced against synthesized peptide derived from human Casein Kinase II alpha around the phosphorylation site of Tyr255. AA range: 221-270

Specificity

Phospho-Casein Kinase II α (Y255) Polyclonal Antibody detects endogenous levels of Casein Kinase II α protein only when phosphorylated at Y255. The name of modified sites may be influenced by many factors, such as species (the modified site was not originally found in human samples) and the change of protein sequence (the previous protein sequence is incomplete, and the protein sequence may be prolonged with the development of protein sequencing technology). When naming, we will use the "numbers" in historical reference to keep the sites consistent with the reports. The antibody binds to the following modification sequence (lowercase letters are modification sites):DLyDY

| Target Information

Gene name CSNK2A1

Protein Name Casein kinase II subunit alpha

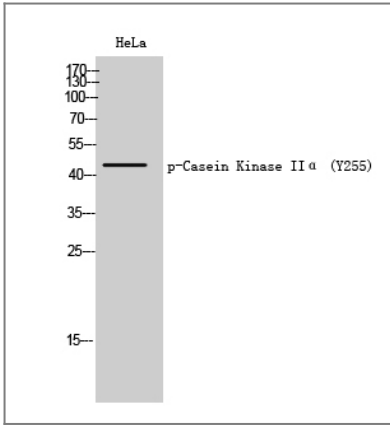
Organism	Gene ID	UniProt ID
Human	1457 ;	P68400 ;
Mouse	12995 ;	Q60737 ;
Rat	116549 ;	P19139 ;

Cellular Localization Nucleus .

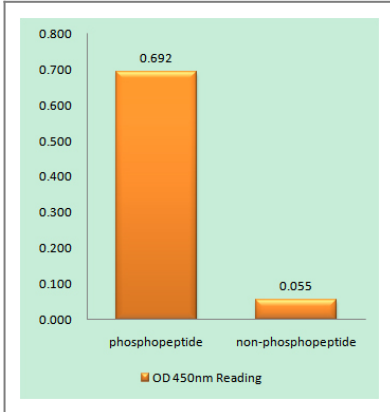
Tissue specificity Expressed in gastric carcinoma tissue and the expression gradually increases with the progression of the carcinoma (at protein level).

Function Catalytic activity:ATP + a protein = ADP + a phosphoprotein.,Function:Casein kinases are operationally defined by their preferential utilization of acidic proteins such as caseins as substrates. The alpha and alpha' chains contain the catalytic site. Participates in Wnt signaling. CK2 phosphorylates 'Ser-392' of p53/TP53 following UV irradiation.,similarity:Belongs to the protein kinase superfamily.,similarity:Belongs to the protein kinase superfamily. Ser/Thr protein kinase family. CK2 subfamily.,similarity:Contains 1 protein kinase domain.,subunit:Tetramer composed of an alpha chain, an alpha' and two beta chains. Also component of a CK2-SPT16-SSRP1 complex composed of SSRP1, SUPT16H, CSNK2A1, CSNK2A2 and CSNK2B, the complex associating following UV irradiation. Interacts with RNPS1.,

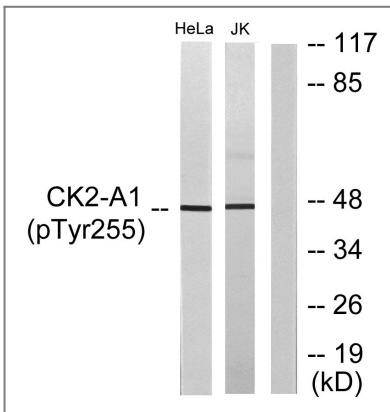
| Validation Data



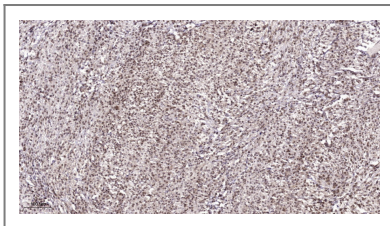
Western Blot analysis of HeLa cells using Phospho-Casein Kinase II α (Y255) Polyclonal Antibody cells nucleus extracted by Minute TM Cytoplasmic and Nuclear Fractionation kit (SC-003, Inventbiotech, MN, USA).



Enzyme-Linked Immunosorbent Assay (Phospho-ELISA) for Immunogen Phosphopeptide (Phospho-left) and Non-Phosphopeptide (Phospho-right), using Casein Kinase II alpha (Phospho-Tyr255) Antibody



Western blot analysis of lysates from HeLa cells and Jurkat cells, using Casein Kinase II alpha (Phospho-Tyr255) Antibody. The lane on the right is blocked with the phospho peptide.



Immunohistochemical analysis of paraffin-embedded human Colon cancer. 1, Antibody was diluted at 1:200(4° overnight). 2, Tris-EDTA,pH9.0 was used for antigen retrieval. 3,Secondary antibody was diluted at 1:200(room temperature, 45min).

Contact information

Orders: order@immunoway.com
 Support: tech@immunoway.com
 Telephone: 877-594-3616 (Toll Free), 408-747-0185
 Website: <http://www.immunoway.com>
 Address: 2200 Ringwood Ave San Jose, CA 95131 USA



Please scan the QR code to access additional product information:
Casein Kinase II α
(Phospho Tyr255)
Rabbit pAb

