

TIS11B (Phospho Ser92) Rabbit pAb

CatalogNo: YP0389

| Key Features

Host Species

- Rabbit

Reactivity

- Human, Mouse, Rat

Applications

- WB, ELISA, IHC

MW

- 36kD (Observed)

Isotype

- IgG

| Recommended Dilution Ratios

WB 1:500-2000

IHC 1:50-300

ELISA 1:2000-20000

| Storage

Storage*

-15°C to -25°C/1 year (Do not lower than -25°C)

Formulation

Liquid in PBS containing 50% glycerol, 0.5% BSA and 0.02% sodium azide.

| Basic Information

Clonality

Polyclonal

| Immunogen Information

Immunogen

The antiserum was produced against synthesized peptide derived from human TISB around the phosphorylation site of Ser92. AA range:58-107

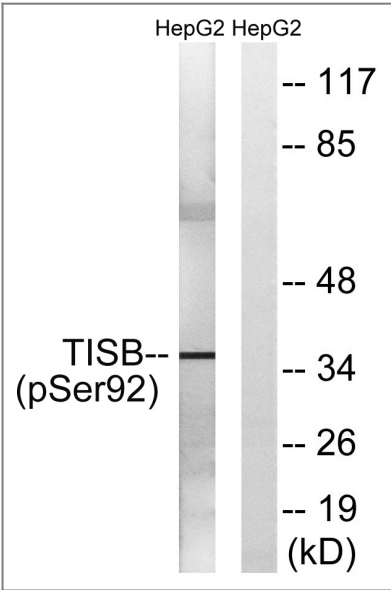
Specificity

Phospho-TIS11B (S92) Polyclonal Antibody detects endogenous levels of TIS11B protein only when phosphorylated at S92. The name of modified sites may be influenced by many factors, such as species (the modified site was not originally found in human samples) and the change of protein sequence (the previous protein sequence is incomplete, and the protein sequence may be prolonged with the development of protein sequencing technology). When naming, we will use the "numbers" in historical reference to keep the sites consistent with the reports. The antibody binds to the following modification sequence (lowercase letters are modification sites):SFsEG

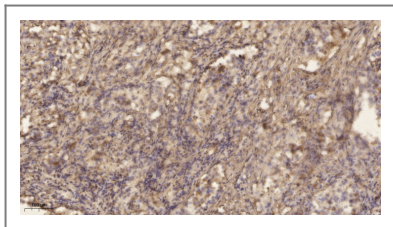
| Target Information

Gene name	ZFP36L1		
Protein Name	Zinc finger protein 36 C3H1 type-like 1		
	Organism	Gene ID	UniProt ID
	Human	677 ;	Q07352 ;
	Mouse	12192 ;	P23950 ;
	Rat	29344 ;	P17431 ;
Cellular Localization	Nucleus . Cytoplasm . Cytoplasmic granule . Cytoplasm, P-body . Shuttles between the nucleus and the cytoplasm in a XPO1/CRM1-dependent manner (By similarity). Component of cytoplasmic stress granules (PubMed:15967811). Localizes in processing bodies (PBs) (PubMed:17369404). .		
Tissue specificity	Expressed mainly in the basal epidermal layer, weakly in the suprabasal epidermal layers (PubMed:27182009). Expressed in epidermal keratinocytes (at protein level) (PubMed:27182009). Expressed in osteoblasts (PubMed:15465005).		
Function	Function:Probable regulatory protein involved in regulating the response to growth factors.,similarity:Contains 2 C3H1-type zinc fingers.,		

| Validation Data



Western blot analysis of lysates from HepG2 cells, using TISB (Phospho-Ser92) Antibody. The lane on the right is blocked with the phospho peptide.



Immunohistochemical analysis of paraffin-embedded human lung cancer. 1, Antibody was diluted at 1:200(4° overnight). 2, Tris-EDTA,pH9.0 was used for antigen retrieval. 3,Secondary antibody was diluted at 1:200(room temperature, 45min).

| Contact information

Orders: order@immunoway.com
Support: tech@immunoway.com
Telephone: 877-594-3616 (Toll Free), 408-747-0185
Website: <http://www.immunoway.com>
Address: 2200 Ringwood Ave San Jose, CA 95131 USA



Please scan the QR code
to access additional
product information:
**TIS11B (Phospho
Ser92) Rabbit pAb**

For Research Use Only. Not for Use in Diagnostic Procedures.

[Antibody](#) | [ELISA Kits](#) | [Protein](#) | [Reagents](#)