

CD40 (Phospho Thr254) Rabbit pAb

CatalogNo: YP0379 Orthogonal Validated 

Key Features

Host Species

- Rabbit

Reactivity

- Human, Mouse

Applications

- WB, ELISA

MW

- 30kD (Observed)

Isotype

- IgG

Storage

Storage* -15°C to -25°C/1 year (Do not lower than -25°C)

Formulation Liquid in PBS containing 50% glycerol, 0.5% BSA and 0.02% sodium azide.

Recommended Dilution Ratios

WB 1:500-1:2000

ELISA 1:5000

Not yet tested in other applications.

Basic Information

Clonality Polyclonal

Immunogen Information

Immunogen The antiserum was produced against synthesized peptide derived from human TNFRSF5 around the phosphorylation site of Thr254. AA range:220-269

Specificity Phospho-CD40 (T254) Polyclonal Antibody detects endogenous levels of CD40 protein only when phosphorylated at T254. The name of modified sites may be influenced by many factors, such as species (the modified site was not originally found in human samples) and the change of protein sequence (the previous protein sequence is incomplete, and the protein sequence may be prolonged with the development of protein sequencing technology). When naming, we will use the "numbers" in historical reference to keep the sites consistent with the reports. The antibody binds to the following modification sequence (lowercase letters are modification sites): QETLH

Target Information

Gene name CD40

Protein Name Tumor necrosis factor receptor superfamily member 5

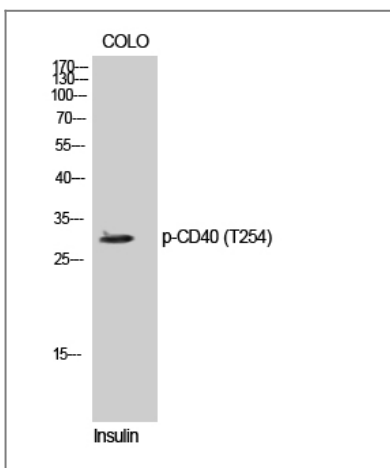
Organism	Gene ID	UniProt ID
Human	958 ;	P25942 ;
Mouse	21939 ;	P27512 ;

Cellular Localization [Isoform I]: Cell membrane; Single-pass type I membrane protein.; [Isoform II]: Secreted.

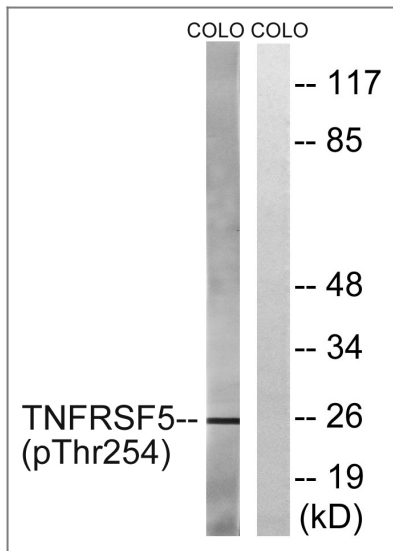
Tissue specificity B-cells and in primary carcinomas.

Function Alternative products:Additional isoforms seem to exist,Disease:Defects in CD40 are the cause of hyper-IgM immunodeficiency type 3 (HIGM3) [MIM:606843]. HIGM3 is an autosomal recessive disorder which includes an inability of B cells to undergo isotype switching, one of the final differentiation steps in the humoral immune system, an inability to mount an antibody-specific immune response, and a lack of germinal center formation.,Function:Receptor for TNFSF5/CD40LG.,online information:CD40 entry,online information:CD40 mutation db,similarity:Contains 4 TNFR-Cys repeats.,subunit:Monomer and homodimer. The variant form found in the bladder carcinoma cell line Hu549 does not form homodimers. Interacts with TRAF1, TRAF2, TRAF3, TRAF5 and TRAF6.,tissue specificity:B-cells and in primary carcinomas.,

Validation Data



Western Blot analysis of COLO cells using Phospho-CD40 (T254) Polyclonal Antibody diluted at 1:500



Western blot analysis of lysates from COLO205 cells treated with Insulin 0.01U/ml 15', using TNFRSF5 (Phospho-Thr254) Antibody. The lane on the right is blocked with the phospho peptide.

Contact information

Orders: order@immunoway.com
 Support: tech@immunoway.com
 Telephone: 877-594-3616 (Toll Free), 408-747-0185
 Website: <http://www.immunoway.com>
 Address: 2200 Ringwood Ave San Jose, CA 95131 USA



Please scan the QR code to access additional product information:
CD40 (Phospho Thr254) Rabbit pAb

For Research Use Only. Not for Use in Diagnostic Procedures.

[Antibody](#) | [ELISA Kits](#) | [Protein](#) | [Reagents](#)