

LEF-1 (Phospho Ser42) Rabbit pAb

CatalogNo: YP0374 **Orthogonal Validated** 

Key Features

Host Species

- Rabbit

Reactivity

- Human, Mouse, Rat

Applications

- WB, IHC

MW

- 55kD (Observed)

Isotype

- IgG

Storage

Storage* -15°C to -25°C/1 year (Do not lower than -25°C)**Formulation** Liquid in PBS containing 50% glycerol, 0.5% BSA and 0.02% sodium azide.

Recommended Dilution Ratios

WB 1:500-2000**IHC 1:50-300**

Basic Information

Clonality Polyclonal

Immunogen Information

Immunogen The antiserum was produced against synthesized peptide derived from human LEF-1 around the phosphorylation site of Ser42. AA range: 8-57**Specificity** Phospho-LEF-1 (S42) Polyclonal Antibody detects endogenous levels of LEF-1 protein only when phosphorylated at S42. The name of modified sites may be influenced by many factors, such as species (the modified site was not originally found in human samples) and the change of protein sequence (the previous protein sequence is incomplete, and the protein sequence may be prolonged with the development of protein sequencing technology). When naming, we will use the "numbers" in historical reference to keep the sites consistent with the reports. The antibody binds to the following modification sequence (lowercase letters are modification sites): ElSHP

Target Information

Gene name LEF1

Protein Name Lymphoid enhancer-binding factor 1

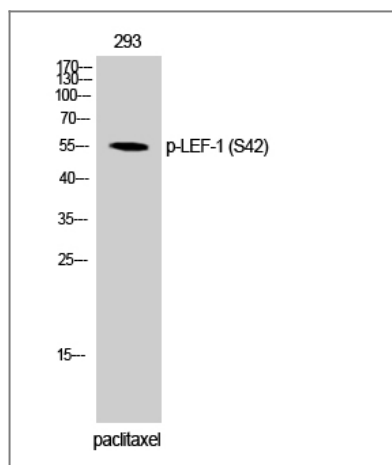
Organism	Gene ID	UniProt ID
Human	51176;	Q9UJU2;
Mouse	16842;	P27782;
Rat	161452;	Q9QXN1;

Cellular Localization Nucleus . Found in nuclear bodies upon PIASG binding. .

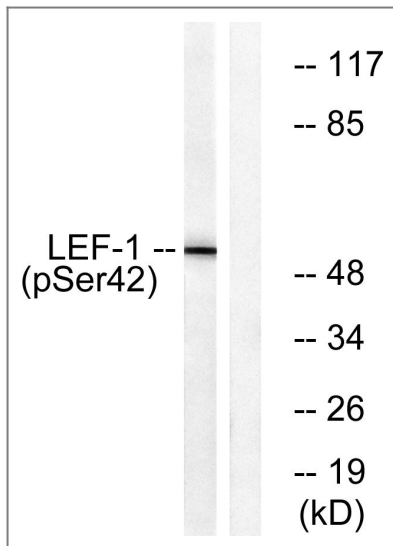
Tissue specificity Detected in thymus. Not detected in normal colon, but highly expressed in colon cancer biopsies and colon cancer cell lines. Expressed in several pancreatic tumors and weakly expressed in normal pancreatic tissue. Isoforms 1 and 5 are detected in several pancreatic cell lines.

Function Alternative products:Additional isoforms seem to exist,Domain:Proline-rich and acidic regions are implicated in the activation functions of RNA polymerase II transcription factors.,Function:Participates in the Wnt signaling pathway. Activates transcription of target genes in the presence of CTNNB1 and EP300. May play a role in hair cell differentiation and follicle morphogenesis. TLE1, TLE2, TLE3 and TLE4 repress transactivation mediated by LEF1 and CTNNB1. Regulates T-cell receptor alpha enhancer function. Binds DNA in a sequence-specific manner. PIAG antagonizes both Wnt-dependent and Wnt-independent activation by LEF1 (By similarity). Isoform 3 lacks the CTNNB1 interaction domain and may be an antagonist for Wnt signaling.,similarity:Belongs to the TCF/LEF family.,similarity:Contains 1 HMG box DNA-binding domain.,subcellular location:Found in nuclear bodies upon PIASG binding.,subunit:Binds the armadillo repeat of CTNNB1 and forms a stable complex. Interacts with EP300, TLE1 and PIASG (By similarity). Binds THOC4, MDFI and MDFIC.,tissue specificity:Detected in thymus. Not detected in normal colon, but highly expressed in colon cancer biopsies and colon cancer cell lines.,

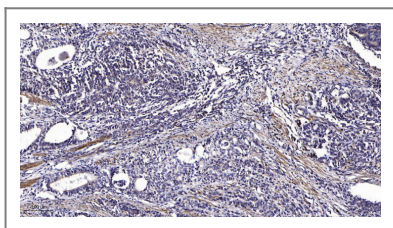
Validation Data



Western Blot analysis of 293 cells using Phospho-LEF-1 (S42) Polyclonal Antibody



Western blot analysis of lysates from 293 cells treated with paclitaxel 1uM 24h, using LEF-1 (Phospho-Ser42) Antibody. The lane on the right is blocked with the phospho peptide.



Immunohistochemical analysis of paraffin-embedded human Gastric adenocarcinoma. 1, Antibody was diluted at 1:200(4° overnight). 2, Tris-EDTA,pH9.0 was used for antigen retrieval. 3,Secondary antibody was diluted at 1:200(room temperature, 45min).

Contact information

Orders: order@immunoway.com
 Support: tech@immunoway.com
 Telephone: 877-594-3616 (Toll Free), 408-747-0185
 Website: <http://www.immunoway.com>
 Address: 2200 Ringwood Ave San Jose, CA 95131 USA



Please scan the QR code to access additional product information:
LEF-1 (Phospho Ser42) Rabbit pAb

For Research Use Only. Not for Use in Diagnostic Procedures.

[Antibody](#) | [ELISA Kits](#) | [Protein](#) | [Reagents](#)