

KIF20A (Phospho Ser528) Rabbit pAb

CatalogNo: YP0373

Key Features

Host Species

- Rabbit

Reactivity

- Human, Mouse, Rat

Applications

- WB, IHC, IF, ELISA

MW

- 100kD (Observed)

Isotype

- IgG

Storage

Storage* -15°C to -25°C/1 year (Do not lower than -25°C)

Formulation Liquid in PBS containing 50% glycerol, 0.5% BSA and 0.02% sodium azide.

Recommended Dilution Ratios

WB 1:500-1:2000

IHC 1:100-1:300

ELISA 1:5000

IF 1:50-200

Basic Information

Clonality Polyclonal

Immunogen Information

Immunogen The antiserum was produced against synthesized peptide derived from human KIF20A around the phosphorylation site of Ser528. AA range:501-550

Specificity Phospho-KIF20A (S528) Polyclonal Antibody detects endogenous levels of KIF20A protein only when phosphorylated at S528. The name of modified sites may be influenced by many factors, such as species (the modified site was not originally found in human samples) and the change of protein sequence (the previous protein sequence is incomplete, and the protein sequence may be prolonged with the development of protein sequencing technology). When naming, we will use the "numbers" in historical reference to keep the sites consistent with the reports. The antibody binds to the following modification sequence (lowercase letters are modification sites):EHsLQ

Target Information

Gene name KIF20A

Protein Name Kinesin-like protein KIF20A

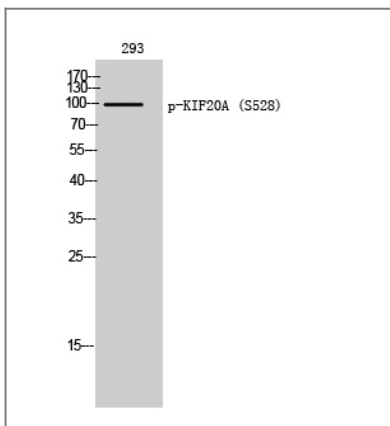
Organism	Gene ID	UniProt ID
Human	10112;	O95235;
Mouse		P97329;

Cellular Localization Golgi apparatus . Cytoplasm, cytoskeleton, spindle . Localizes to the spindle midzone during anaphase and telophase. .

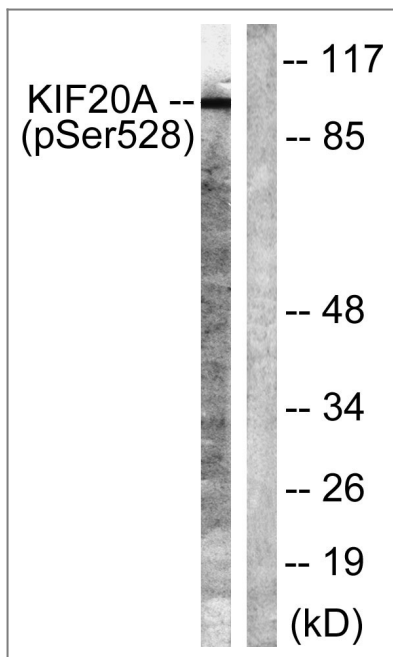
Tissue specificity Brain,Endothelial cell,Epithelium,Uterus,

Function Function:Interacts with guanosine triphosphate (GTP)-bound forms of RAB6A and RAB6B. May act as a motor required for the retrograde RAB6 regulated transport of Golgi membranes and associated vesicles along microtubules. Has a microtubule plus end-directed motility.,similarity:Belongs to the kinesin-like protein family.,similarity:Contains 1 kinesin-motor domain.,

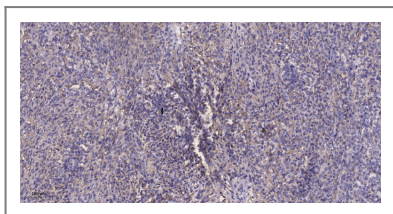
Validation Data



Western Blot analysis of 293 cells using Phospho-KIF20A (S528) Polyclonal Antibody



Western blot analysis of lysates from 293 cells, using KIF20A (Phospho-Ser528) Antibody. The lane on the right is blocked with the phospho peptide.



Immunohistochemical analysis of paraffin-embedded human Colon cancer. 1, Antibody was diluted at 1:200(4° overnight). 2, Tris-EDTA,pH9.0 was used for antigen retrieval. 3,Secondary antibody was diluted at 1:200(room temperature, 45min).

Contact information

Orders: order@immunoway.com
 Support: tech@immunoway.com
 Telephone: 877-594-3616 (Toll Free), 408-747-0185
 Website: <http://www.immunoway.com>
 Address: 2200 Ringwood Ave San Jose, CA 95131 USA



Please scan the QR code to access additional product information:
KIF20A (Phospho Ser528) Rabbit pAb

For Research Use Only. Not for Use in Diagnostic Procedures.

[Antibody](#) | [ELISA Kits](#) | [Protein](#) | [Reagents](#)