

Eg5 (Phospho Thr926) Rabbit pAb

CatalogNo: YP0372

Key Features

Host Species

- Rabbit

Reactivity

- Human, Mouse, Rat

Applications

- WB, IHC, IF, ELISA

MW

- 119kD (Observed)

Isotype

- IgG

Storage

Storage* -15°C to -25°C/1 year (Do not lower than -25°C)

Formulation Liquid in PBS containing 50% glycerol, 0.5% BSA and 0.02% sodium azide.

Recommended Dilution Ratios

WB 1:500-1:2000

ELISA 1:5000

IF 1:50-200

Basic Information

Clonality Polyclonal

Immunogen Information

Immunogen The antiserum was produced against synthesized peptide derived from human KIF11/Eg5 around the phosphorylation site of Thr926. AA range: 892-941

Specificity Phospho-Eg5 (T926) Polyclonal Antibody detects endogenous levels of Eg5 protein only when phosphorylated at T926. The name of modified sites may be influenced by many factors, such as species (the modified site was not originally found in human samples) and the change of protein sequence (the previous protein sequence is incomplete, and the protein sequence may be prolonged with the development of protein sequencing technology). When naming, we will use the "numbers" in historical reference to keep the sites consistent with the reports. The antibody binds to the following modification sequence (lowercase letters are modification sites): GTtPQ

Target Information

Gene name KIF11

Protein Name Kinesin-like protein KIF11

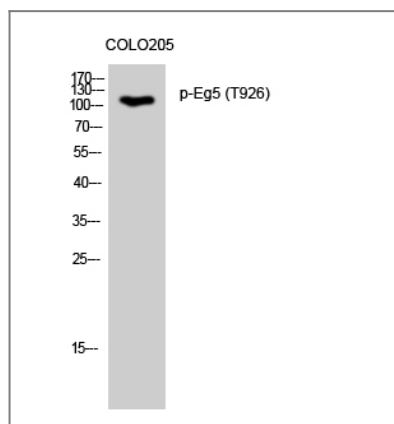
Organism	Gene ID	UniProt ID
Human	3832 ;	P52732 ;
Mouse		Q6P9P6 ;

Cellular Localization Cytoplasm . Cytoplasm, cytoskeleton, spindle pole .

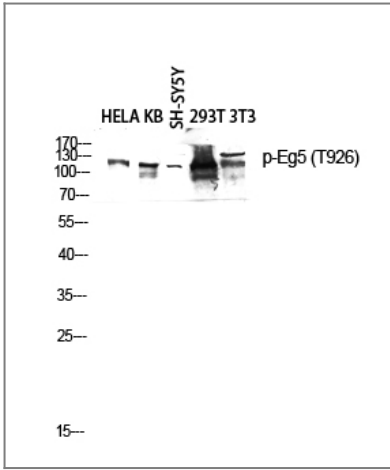
Tissue specificity Brain,Epithelium,Lung,

Function Function:Motor protein required for establishing a bipolar spindle. Blocking of KIF11 prevents centrosome migration and arrest cells in mitosis with monoastral microtubule arrays.,PTM:Phosphorylated exclusively on serine during S phase, but on both serine and Thr-926 during mitosis, so controlling the association of KIF11 with the spindle apparatus (probably during early prophase). Phosphorylated upon DNA damage, probably by ATM or ATR.,similarity:Belongs to the kinesin-like protein family. BimC subfamily.,similarity:Contains 1 kinesin-motor domain.,subunit:Interacts with the thyroid hormone receptor in the presence of thyroid hormone. Component of a large chromatin remodeling complex, at least composed of MYSM1, PCAF, RBM10 and KIF11/TRIP5.,

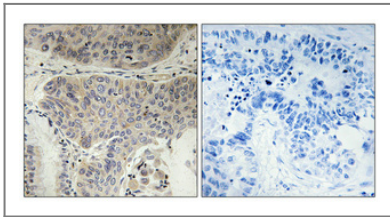
Validation Data



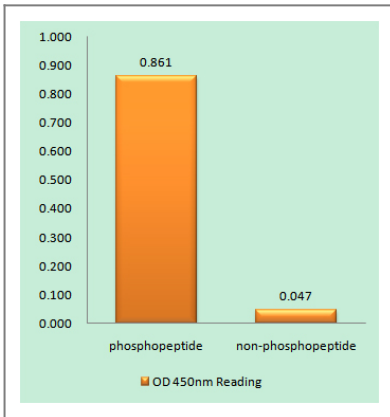
Western Blot analysis of COLO205 cells using Phospho-Eg5 (T926) Polyclonal Antibody diluted at 1:2000 cells nucleus extracted by Minute TM Cytoplasmic and Nuclear Fractionation kit (SC-003, Invent biotech, MN, USA).



Western blot analysis of HELA KB SH-SY5Y 293T 3T3 lysis using Phospho-Eg5 (T926) antibody. Antibody was diluted at 1:2000 cells nucleus extracted by Minute TM Cytoplasmic and Nuclear Fractionation kit (SC-003, Inventbiotech, MN, USA).



Immunohistochemical analysis of paraffin-embedded Human lung cancer. Antibody was diluted at 1:100(4° overnight). High-pressure and temperature Tris-EDTA, pH8.0 was used for antigen retrieval. Negative control (right) obtained from antibody was pre-absorbed by immunogen peptide.



Enzyme-Linked Immunosorbent Assay (Phospho-ELISA) for Immunogen Phosphopeptide (Phospho-left) and Non-Phosphopeptide (Phospho-right), using KIF11/Eg5 (Phospho-Thr926) Antibody

Contact information

Orders: order@immunoway.com
 Support: tech@immunoway.com
 Telephone: 877-594-3616 (Toll Free), 408-747-0185
 Website: <http://www.immunoway.com>
 Address: 2200 Ringwood Ave San Jose, CA 95131 USA



Please scan the QR code to access additional product information:
Eg5 (Phospho Thr926) Rabbit pAb