

## IL-2R $\beta$ (Phospho Tyr364) Rabbit pAb

CatalogNo: YP0370

### Key Features

#### Host Species

- Rabbit

#### Reactivity

- Human, Mouse, Rat, Monkey

#### Applications

- WB, ELISA

#### MW

- 75kD (Observed)

#### Isotype

- IgG

### Storage

**Storage\*** -15°C to -25°C/1 year (Do not lower than -25°C)

**Formulation** Liquid in PBS containing 50% glycerol, 0.5% BSA and 0.02% sodium azide.

### Recommended Dilution Ratios

**WB 1:500-1:2000**

**ELISA 1:10000**

**Not yet tested in other applications.**

### Basic Information

**Clonality** Polyclonal

### Immunogen Information

**Immunogen** The antiserum was produced against synthesized peptide derived from human IL-2R beta/CD122 around the phosphorylation site of Tyr364. AA range:331-380

**Specificity** Phospho-IL-2R $\beta$  (Y364) Polyclonal Antibody detects endogenous levels of IL-2R $\beta$  protein only when phosphorylated at Y364. The name of modified sites may be influenced by many factors, such as species (the modified site was not originally found in human samples) and the change of protein sequence (the previous protein sequence is incomplete, and the protein sequence may be prolonged with the development of protein sequencing technology). When naming, we will use the "numbers" in historical reference to keep the sites consistent with the reports. The antibody binds to the following modification sequence (lowercase letters are modification sites): QGyFF

## Target Information

**Gene name** IL2RB

**Protein Name** Interleukin-2 receptor subunit beta

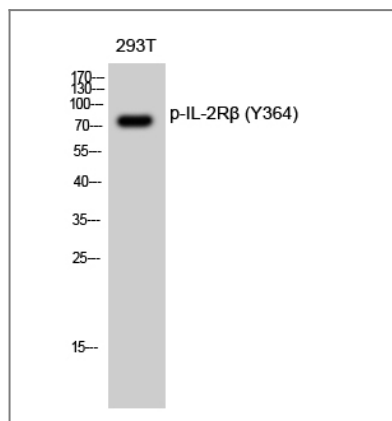
Organism	Gene ID	UniProt ID
Human	<a href="#">3560</a> ;	<a href="#">P14784</a> ;
Mouse	<a href="#">16185</a> ;	<a href="#">P16297</a> ;
Rat	<a href="#">25746</a> ;	<a href="#">P26896</a> ;

**Cellular Localization** Cell membrane ; Single-pass type I membrane protein .

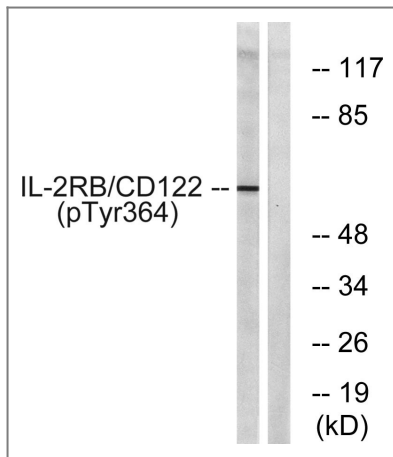
**Tissue specificity** Lung,

**Function** Domain:The box 1 motif is required for JAK interaction and/or activation.,Domain:The WSXWS motif appears to be necessary for proper protein folding and thereby efficient intracellular transport and cell-surface receptor binding.,Function:Receptor for interleukin-2. This beta subunit is involved in receptor mediated endocytosis and transduces the mitogenic signals of IL2.,similarity:Belongs to the type I cytokine receptor family. Type 4 subfamily.,similarity:Contains 1 fibronectin type-III domain.,subunit:Non-covalent dimer of an alpha and a beta chains. IL2R exists in 3 different forms: a high affinity dimer, an intermediate affinity monomer (beta chain), and a low affinity monomer (alpha chain). The high and intermediate affinity forms also associate with a gamma chain. Interacts with SHB upon interleukin stimulation. Interacts with HTLV-1 accessory protein p12I.,

## Validation Data



Western Blot analysis of 293T cells using Phospho-IL-2Rβ (Y364) Polyclonal Antibody diluted at 1:500



Western blot analysis of lysates from COS7 cells, using IL-2R beta/CD122 (Phospho-Tyr364) Antibody. The lane on the right is blocked with the phospho peptide.

## Contact information

Orders: [order@immunoway.com](mailto:order@immunoway.com)  
Support: [tech@immunoway.com](mailto:tech@immunoway.com)  
Telephone: 877-594-3616 (Toll Free), 408-747-0185  
Website: <http://www.immunoway.com>  
Address: 2200 Ringwood Ave San Jose, CA 95131 USA



Please scan the QR code to access additional product information:  
**IL-2R $\beta$  (Phospho Tyr364) Rabbit pAb**

For Research Use Only. Not for Use in Diagnostic Procedures.

[Antibody](#) | [ELISA Kits](#) | [Protein](#) | [Reagents](#)