

IL-2R β (Phospho Tyr364) Rabbit pAb

CatalogNo: YP0369

Key Features

Host Species

- Rabbit

Reactivity

- Human, Mouse, Rat

Applications

- WB, IF, ELISA

MW

- 61kD (Observed)

Isotype

- IgG

Recommended Dilution Ratios

WB 1:500-1:2000**IF 1:200-1:1000****ELISA 1:10000****Not yet tested in other applications.**

Storage

Storage*

-15°C to -25°C/1 year (Do not lower than -25°C)

Formulation

Liquid in PBS containing 50% glycerol, 0.5% BSA and 0.02% sodium azide.

Basic Information

Clonality

Polyclonal

Immunogen Information

Immunogen

The antiserum was produced against synthesized peptide derived from human IL-2R beta around the phosphorylation site of Tyr364. AA range: 331-380

Specificity

Phospho-IL-2R β (Y364) Polyclonal Antibody detects endogenous levels of IL-2R β protein only when phosphorylated at Y364. The name of modified sites may be influenced by many factors, such as species (the modified site was not originally found in human samples) and the change of protein sequence (the previous protein sequence is incomplete, and the protein sequence may be prolonged with the development of protein sequencing technology). When naming, we will use the "numbers" in historical reference to keep the sites consistent with the reports. The antibody binds to the following modification sequence (lowercase letters are modification sites): QGyFF

Target Information

Gene name IL2RB

Protein Name Interleukin-2 receptor subunit beta

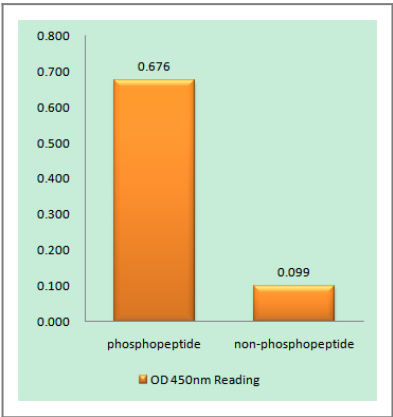
Organism	Gene ID	UniProt ID
Human	3560 ;	P14784 ;
Mouse	16185 ;	P16297 ;
Rat	25746 ;	P26896 ;

Cellular Localization Cell membrane ; Single-pass type I membrane protein .

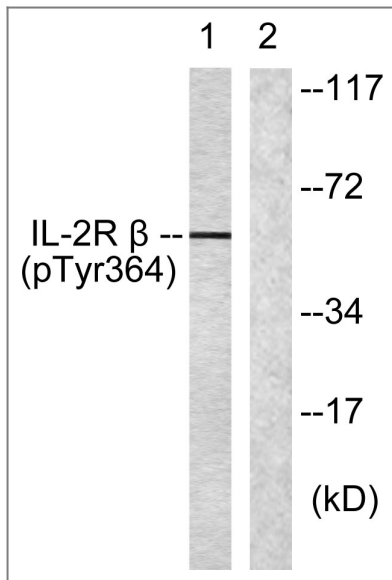
Tissue specificity Lung,

Function Domain:The box 1 motif is required for JAK interaction and/or activation.,Domain:The WSXWS motif appears to be necessary for proper protein folding and thereby efficient intracellular transport and cell-surface receptor binding.,Function:Receptor for interleukin-2. This beta subunit is involved in receptor mediated endocytosis and transduces the mitogenic signals of IL2.,similarity:Belongs to the type I cytokine receptor family. Type 4 subfamily.,similarity:Contains 1 fibronectin type-III domain.,subunit:Non-covalent dimer of an alpha and a beta chains. IL2R exists in 3 different forms: a high affinity dimer, an intermediate affinity monomer (beta chain), and a low affinity monomer (alpha chain). The high and intermediate affinity forms also associate with a gamma chain. Interacts with SHB upon interleukin stimulation. Interacts with HTLV-1 accessory protein p12I.,

Validation Data



Enzyme-Linked Immunosorbent Assay (Phospho-ELISA) for Immunogen Phosphopeptide (Phospho-left) and Non-Phosphopeptide (Phospho-right), using IL-2R beta (Phospho-Tyr364) Antibody



Western blot analysis of lysates from HeLa cells, using IL-2R beta (Phospho-Tyr364) Antibody. The lane on the right is blocked with the phospho peptide.

Contact information

Orders: order@immunoway.com
 Support: tech@immunoway.com
 Telephone: 877-594-3616 (Toll Free), 408-747-0185
 Website: <http://www.immunoway.com>
 Address: 2200 Ringwood Ave San Jose, CA 95131 USA



Please scan the QR code to access additional product information:
IL-2Rβ (Phospho Tyr364) Rabbit pAb

For Research Use Only. Not for Use in Diagnostic Procedures.

[Antibody](#) | [ELISA Kits](#) | [Protein](#) | [Reagents](#)