

## IL-10R $\alpha$ (Phospho Tyr496) Rabbit pAb

CatalogNo: YP0368

### Key Features

**Host Species**

- Rabbit

**Reactivity**

- Human, Mouse, Rat

**Applications**

- WB, ELISA

**MW**

- 63kD (Observed)

**Isotype**

- IgG

### Storage

**Storage\*** -15°C to -25°C/1 year (Do not lower than -25°C)**Formulation** Liquid in PBS containing 50% glycerol, 0.5% BSA and 0.02% sodium azide.

### Recommended Dilution Ratios

**WB 1:500-1:2000****ELISA 1:20000****Not yet tested in other applications.**

### Basic Information

**Clonality** Polyclonal

### Immunogen Information

**Immunogen** The antiserum was produced against synthesized peptide derived from human IL-10R $\alpha$  around the phosphorylation site of Tyr496. AA range:462-511**Specificity** Phospho-IL-10R $\alpha$  (Y496) Polyclonal Antibody detects endogenous levels of IL-10R $\alpha$  protein only when phosphorylated at Y496. The name of modified sites may be influenced by many factors, such as species (the modified site was not originally found in human samples) and the change of protein sequence (the previous protein sequence is incomplete, and the protein sequence may be prolonged with the development of protein sequencing technology). When naming, we will use the "numbers" in historical reference to keep the sites consistent with the reports. The antibody binds to the following modification sequence (lowercase letters are modification sites): KGyLK

## Target Information

**Gene name** IL10RA

**Protein Name** Interleukin-10 receptor subunit alpha

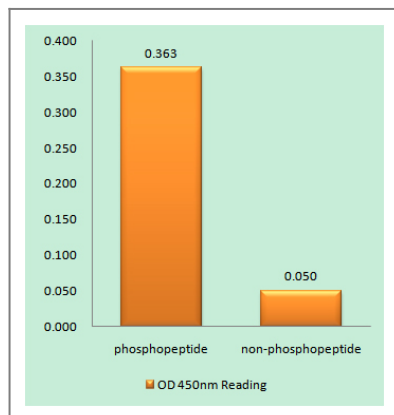
Organism	Gene ID	UniProt ID
Human	<a href="#">3587</a> ;	<a href="#">Q13651</a> ;
Mouse		<a href="#">Q61727</a> ;

**Cellular Localization** Cell membrane ; Single-pass type I membrane protein. Cytoplasm .

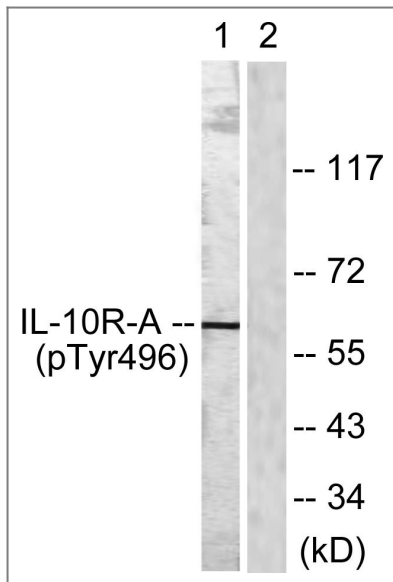
**Tissue specificity** Primarily expressed in hematopoietic cells including B-cells, T-cells, NK cells, monocytes and macrophages. Not expressed in non-hematopoietic cells such as fibroblasts or endothelial cells.

**Function** Function:Receptor for IL10; binds IL10 with a high affinity.,similarity:Belongs to the type II cytokine receptor family.,tissue specificity:Spleen, thymus, and PBMC. Weak expression in pancreas, skeletal muscle, brain, heart, and kidney. Placenta, lung, and liver showed intermediate levels. Monocytes, B-cells, large granular lymphocytes, and T-cells express high levels.,

## Validation Data



Enzyme-Linked Immunosorbent Assay (Phospho-ELISA) for Immunogen Phosphopeptide (Phospho-left) and Non-Phosphopeptide (Phospho-right), using IL-10R alpha (Phospho-Tyr496) Antibody



Western blot analysis of lysates from HUVEC cells, using IL-10R alpha (Phospho-Tyr496) Antibody. The lane on the right is blocked with the phospho peptide.

## Contact information

Orders: [order@immunoway.com](mailto:order@immunoway.com)  
Support: [tech@immunoway.com](mailto:tech@immunoway.com)  
Telephone: 877-594-3616 (Toll Free), 408-747-0185  
Website: <http://www.immunoway.com>  
Address: 2200 Ringwood Ave San Jose, CA 95131 USA



Please scan the QR code to access additional product information:

**IL-10R $\alpha$  (Phospho Tyr496) Rabbit pAb**

For Research Use Only. Not for Use in Diagnostic Procedures.

[Antibody](#) | [ELISA Kits](#) | [Protein](#) | [Reagents](#)