

GATA-2 (Phospho Ser401) Rabbit pAb

CatalogNo: YP0358 Orthogonal Validated 

Key Features

Host Species

- Rabbit

Reactivity

- Human, Monkey

Applications

- WB, ELISA

MW

- 50kD (Observed)

Isotype

- IgG

Storage

Storage* -15°C to -25°C/1 year (Do not lower than -25°C)

Formulation Liquid in PBS containing 50% glycerol, 0.5% BSA and 0.02% sodium azide.

Recommended Dilution Ratios

WB 1:500-1:2000

ELISA 1:5000

Not yet tested in other applications.

Basic Information

Clonality Polyclonal

Immunogen Information

Immunogen The antiserum was produced against synthesized peptide derived from human GATA2 around the phosphorylation site of Ser401. AA range:367-416

Specificity Phospho-GATA-2 (S401) Polyclonal Antibody detects endogenous levels of GATA-2 protein only when phosphorylated at S401. The name of modified sites may be influenced by many factors, such as species (the modified site was not originally found in human samples) and the change of protein sequence (the previous protein sequence is incomplete, and the protein sequence may be prolonged with the development of protein sequencing technology). When naming, we will use the "numbers" in historical reference to keep the sites consistent with the reports. The antibody binds to the following modification sequence (lowercase letters are modification sites):KMSNK

Target Information

Gene name GATA2

Protein Name Endothelial transcription factor GATA-2

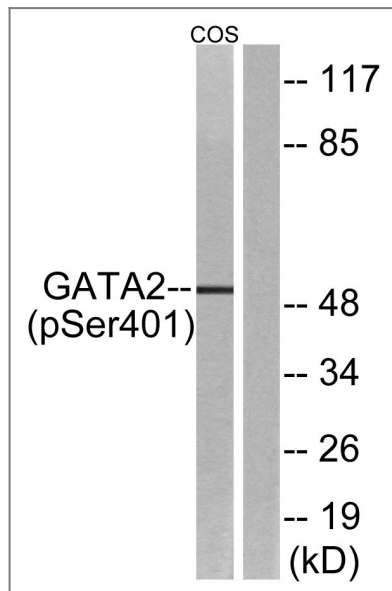
Organism	Gene ID	UniProt ID
Human	2624;	P23769;
Mouse		O09100;

Cellular Localization Nucleus.

Tissue specificity Endothelial cells.

Function Function:Transcriptional activator which regulates endothelin-1 gene expression in endothelial cells. Binds to the consensus sequence 5'-AGATAG-3'.,sequence Caution:Several sequencing errors.,similarity:Contains 2 GATA-type zinc fingers.,tissue specificity:Endothelial cells.,

Validation Data



Western blot analysis of lysates from COS7 cells treated with TNF 20ng/ml 5', using GATA2 (Phospho-Ser401) Antibody. The lane on the right is blocked with the phospho peptide.

Contact information

Orders: order@immunoway.com
Support: tech@immunoway.com
Telephone: 877-594-3616 (Toll Free), 408-747-0185
Website: http://www.immunoway.com
Address: 2200 Ringwood Ave San Jose, CA 95131 USA



Please scan the QR code to access additional product information:
GATA-2 (Phospho Ser401) Rabbit pAb

For Research Use Only. Not for Use in Diagnostic Procedures.

[Antibody](#) | [ELISA Kits](#) | [Protein](#) | [Reagents](#)