

C/EBP α (Phospho Thr226) Rabbit pAb

CatalogNo: YP0344 **Orthogonal Validated** 

Key Features

Host Species

- Rabbit

Reactivity

- Human, Mouse, Rat, Monkey

Applications

- WB, ELISA

MW

- 42kD, also have 30kD isform (Observed)

Isotype

- IgG

Storage

Storage* -15°C to -25°C/1 year (Do not lower than -25°C)**Formulation** Liquid in PBS containing 50% glycerol, 0.5% BSA and 0.02% sodium azide.

Recommended Dilution Ratios

WB 1:500-1:2000**ELISA 1:10000****Not yet tested in other applications.**

Basic Information

Clonality Polyclonal

Immunogen Information

Immunogen The antiserum was produced against synthesized peptide derived from human C/EBP-alpha around the phosphorylation site of Thr226. AA range:192-241

Specificity

Phospho-C/EBP α (T226) Polyclonal Antibody detects endogenous levels of C/EBP α protein only when phosphorylated at T226. The name of modified sites may be influenced by many factors, such as species (the modified site was not originally found in human samples) and the change of protein sequence (the previous protein sequence is incomplete, and the protein sequence may be prolonged with the development of protein sequencing technology). When naming, we will use the "numbers" in historical reference to keep the sites consistent with the reports. The antibody binds to the following modification sequence (lowercase letters are modification sites):HPTPP

Target Information

Gene name CEBPA

Protein Name CCAAT/enhancer-binding protein alpha

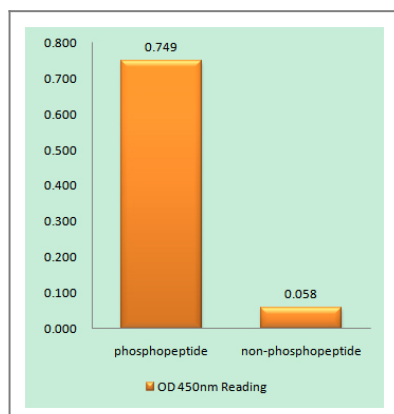
Organism	Gene ID	UniProt ID
Human	1050 ;	P49715 ;
Mouse	12606 ;	P53566 ;
Rat	24252 ;	P05554 ;

Cellular Localization Nucleus .; [Isoform 4]: Nucleus, nucleolus .

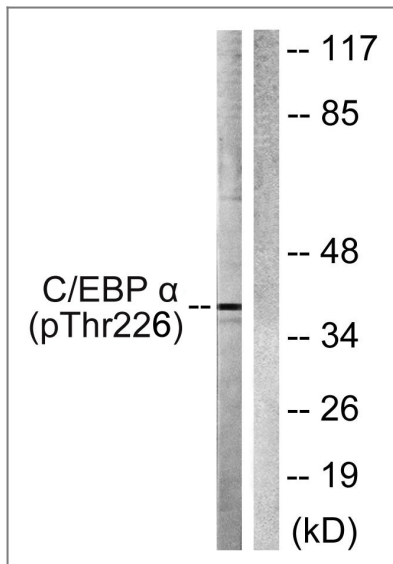
Tissue specificity Liver,Pancreas,Umbilical cord,White Matter pool- 5 brain tissues- f

Function Function:C/EBP is a DNA-binding protein that recognizes two different motifs: the CCAAT homology common to many promoters and the enhanced core homology common to many enhancers.,similarity:Belongs to the bZIP family.,similarity:Belongs to the bZIP family. C/EBP subfamily.,similarity:Contains 1 bZIP domain.,subunit:Binds DNA as a dimer and can form stable heterodimers with C/EBP beta and gamma. Interacts with UBN1. Interacts with HBV protein X.,

Validation Data



Enzyme-Linked Immunosorbent Assay (Phospho-ELISA) for Immunogen Phosphopeptide (Phospho-left) and Non-Phosphopeptide (Phospho-right), using C/EBP-alpha (Phospho-Thr226) Antibody



Western blot analysis of lysates from COS7 cells treated with EGF 200ng/ml 30', using C/EBP-alpha (Phospho-Thr226) Antibody. The lane on the right is blocked with the phospho peptide.

Contact information

Orders: order@immunoway.com
Support: tech@immunoway.com
Telephone: 877-594-3616 (Toll Free), 408-747-0185
Website: <http://www.immunoway.com>
Address: 2200 Ringwood Ave San Jose, CA 95131 USA



Please scan the QR code to access additional product information:
C/EBP α (Phospho Thr226) Rabbit pAb

For Research Use Only. Not for Use in Diagnostic Procedures.

[Antibody](#) | [ELISA Kits](#) | [Protein](#) | [Reagents](#)