

Pim-1 (Phospho Tyr309) Rabbit pAb

CatalogNo: YP0331 Orthogonal Validated 

Key Features

Host Species

- Rabbit

Reactivity

- Human, Mouse, Rat

Applications

- WB, ELISA

MW

- 45kD (Observed)

Isotype

- IgG

Storage

Storage* -15°C to -25°C/1 year (Do not lower than -25°C)

Formulation Liquid in PBS containing 50% glycerol, 0.5% BSA and 0.02% sodium azide.

Recommended Dilution Ratios

WB 1:500-1:2000

ELISA 1:40000

Not yet tested in other applications.

Basic Information

Clonality Polyclonal

Immunogen Information

Immunogen The antiserum was produced against synthesized peptide derived from human Pim-1 around the phosphorylation site of Tyr309. AA range: 281-330

Specificity Phospho-Pim-1 (Y309) Polyclonal Antibody detects endogenous levels of Pim-1 protein only when phosphorylated at Y309. The name of modified sites may be influenced by many factors, such as species (the modified site was not originally found in human samples) and the change of protein sequence (the previous protein sequence is incomplete, and the protein sequence may be prolonged with the development of protein sequencing technology). When naming, we will use the "numbers" in historical reference to keep the sites consistent with the reports. The antibody binds to the following modification sequence (lowercase letters are modification sites): HRyHG

Target Information

Gene name PIM1

Protein Name Serine/threonine-protein kinase pim-1

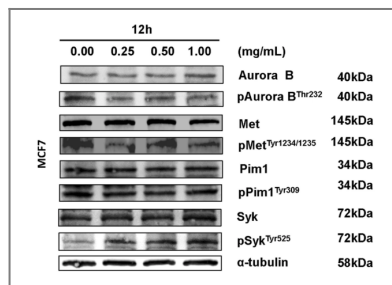
Organism	Gene ID	UniProt ID
Human	5292 ;	P11309 ;
Mouse		P06803 ;
Rat	24649 ;	P26794 ;

Cellular Localization [Isoform 1]: Cytoplasm. Nucleus.; [Isoform 2]: Cell membrane.

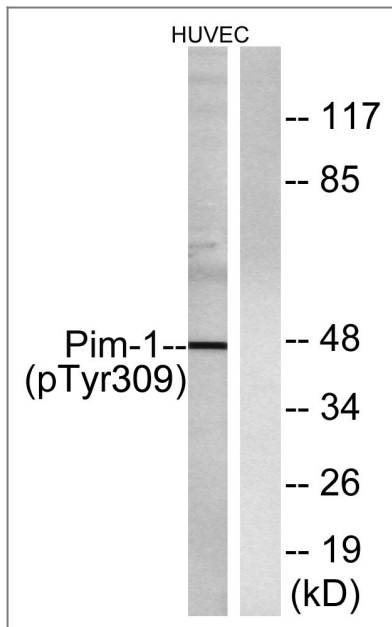
Tissue specificity Expressed primarily in cells of the hematopoietic and germline lineages. Isoform 1 and isoform 2 are both expressed in prostate cancer cell lines.

Function Catalytic activity:ATP + a protein = ADP + a phosphoprotein.,cofactor:Manganese.,Function:Plays a role in signal transduction in blood cells. Contributes to both cell proliferation and survival and thus provide a selective advantage in tumorigenesis. May affect the structure or silencing of chromatin by phosphorylating HP1 gamma/CBX3.,induction:Strongly induced in leukocytes by the JAK/STAT pathway in response to cytokines.,PTM:Autophosphorylated on both serine/threonine and tyrosine residues.,similarity:Belongs to the protein kinase superfamily. CAMK Ser/Thr protein kinase family. PIM subfamily.,similarity:Contains 1 protein kinase domain.,subunit:Binds to RP9. Isoform 2 is isolated as a monomer whereas isoform 1 complexes with other proteins. Isoform 1, but not isoform 2, binds BMX.,tissue specificity:Expressed primarily in cells of the hematopoietic and germline lineages. Isoform 1 and isoform 2 are both expressed in prostate cancer cell lines.,

Validation Data



Wang, T., Liang, L., Zhao, C. et al. Elucidating direct kinase targets of compound Danshen dropping pills employing archived data and prediction models. *Sci Rep* 11, 9541 (2021).



Western blot analysis of lysates from HUVEC cells treated with PMA 125ng/ml 30', using Pim-1 (Phospho-Tyr309) Antibody. The lane on the right is blocked with the phospho peptide.

Contact information

Orders: order@immunoway.com
 Support: tech@immunoway.com
 Telephone: 877-594-3616 (Toll Free), 408-747-0185
 Website: <http://www.immunoway.com>
 Address: 2200 Ringwood Ave San Jose, CA 95131 USA



Please scan the QR code to access additional product information:
Pim-1 (Phospho Tyr309) Rabbit pAb

For Research Use Only. Not for Use in Diagnostic Procedures.

[Antibody](#) | [ELISA Kits](#) | [Protein](#) | [Reagents](#)