

CD32 (Phospho Tyr292) Rabbit pAb

CatalogNo: YP0325 Orthogonal Validated 

Key Features

Host Species

- Rabbit

Reactivity

- Human, Mouse, Rat

Applications

- WB, ELISA

MW

- 32kD (Observed)

Isotype

- IgG

Storage

Storage* -15°C to -25°C/1 year (Do not lower than -25°C)

Formulation Liquid in PBS containing 50% glycerol, 0.5% BSA and 0.02% sodium azide.

Recommended Dilution Ratios

WB 1:500-1:2000

ELISA 1:10000

Not yet tested in other applications.

Basic Information

Clonality Polyclonal

Immunogen Information

Immunogen The antiserum was produced against synthesized peptide derived from human CD32 around the phosphorylation site of Tyr292. AA range:258-307

Specificity Phospho-CD32 (Y292) Polyclonal Antibody detects endogenous levels of CD32 protein only when phosphorylated at Y292. The name of modified sites may be influenced by many factors, such as species (the modified site was not originally found in human samples) and the change of protein sequence (the previous protein sequence is incomplete, and the protein sequence may be prolonged with the development of protein sequencing technology). When naming, we will use the "numbers" in historical reference to keep the sites consistent with the reports. The antibody binds to the following modification sequence (lowercase letters are modification sites):ITySL

Target Information

Gene name FCGR2B

Protein Name Low affinity immunoglobulin gamma Fc region receptor II-b

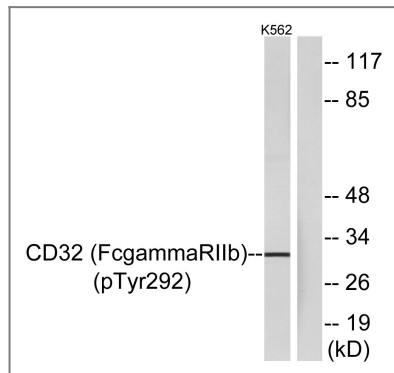
Organism	Gene ID	UniProt ID
Human	2213 ;	P31994 ;

Cellular Localization Cell membrane; Single-pass type I membrane protein.

Tissue specificity Is the most broadly distributed Fc-gamma-receptor. Expressed in monocyte, neutrophils, macrophages, basophils, eosinophils, Langerhans cells, B-cells, platelets cells and placenta (endothelial cells). Not detected in natural killer cells.

Function immune response,

Validation Data



Western blot analysis of lysates from K562 cells treated with PMA 125ng/ml 30', using CD32 (Phospho-Tyr292) Antibody. The lane on the right is blocked with the phospho peptide.

Contact information

Orders: order@immunoway.com
Support: tech@immunoway.com
Telephone: 877-594-3616 (Toll Free), 408-747-0185
Website: <http://www.immunoway.com>
Address: 2200 Ringwood Ave San Jose, CA 95131 USA



Please scan the QR code to access additional product information:
CD32 (Phospho Tyr292) Rabbit pAb