

## TFII-I (Phospho Tyr248) Rabbit pAb

CatalogNo: YP0320

### Key Features

#### Host Species

- Rabbit

#### Reactivity

- Human, Mouse, Rat

#### Applications

- WB, ELISA

#### MW

- 115kD (Observed)

#### Isotype

- IgG

### Storage

**Storage\*** -15°C to -25°C/1 year (Do not lower than -25°C)

**Formulation** Liquid in PBS containing 50% glycerol, 0.5% BSA and 0.02% sodium azide.

### Recommended Dilution Ratios

**WB 1:500-1:2000**

**ELISA 1:5000**

**Not yet tested in other applications.**

### Basic Information

**Clonality** Polyclonal

### Immunogen Information

**Immunogen** The antiserum was produced against synthesized peptide derived from human TFII-I around the phosphorylation site of Tyr248. AA range: 214-263

**Specificity** Phospho-TFII-I (Y248) Polyclonal Antibody detects endogenous levels of TFII-I protein only when phosphorylated at Y248. The name of modified sites may be influenced by many factors, such as species (the modified site was not originally found in human samples) and the change of protein sequence (the previous protein sequence is incomplete, and the protein sequence may be prolonged with the development of protein sequencing technology). When naming, we will use the "numbers" in historical reference to keep the sites consistent with the reports. The antibody binds to the following modification sequence (lowercase letters are modification sites): PDyYQ

---

## | Target Information

**Gene name** GTF2I

**Protein Name** General transcription factor II-I

Organism	Gene ID	UniProt ID
Human	<a href="#">2969</a> ;	<a href="#">P78347</a> ;
Mouse	<a href="#">14886</a> ;	<a href="#">Q9ESZ8</a> ;
Rat	<a href="#">353256</a> ;	<a href="#">Q5U2Y1</a> ;

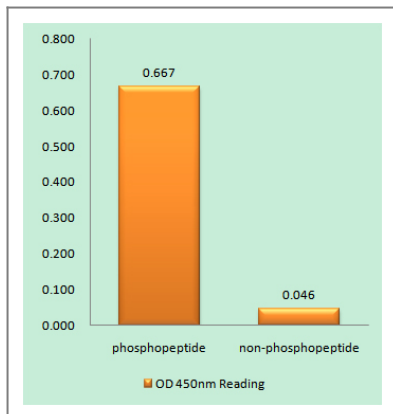
**Cellular Localization** Cytoplasm . Nucleus . Colocalizes with BTK in the cytoplasm.

**Tissue specificity** Ubiquitous. Isoform 1 is strongly expressed in fetal brain, weakly in adult brain, muscle, and lymphoblasts and is almost undetectable in other adult tissues, while the other isoforms are equally expressed in all adult tissues.

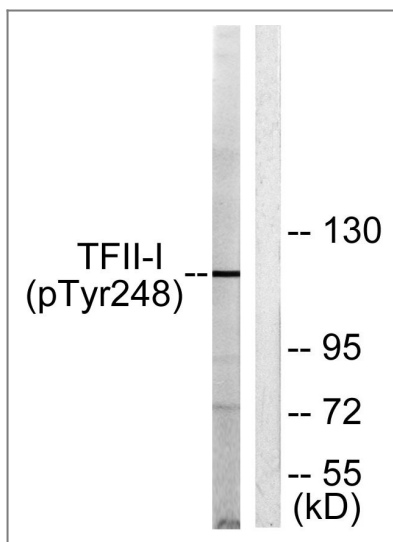
**Function** Disease:Haploinsufficiency of GTF2I may be the cause of certain cardiovascular and musculo-skeletal abnormalities observed in Williams-Beuren syndrome (WBS), a rare developmental disorder. It is a contiguous gene deletion syndrome involving genes from chromosome band 7q11.23.,Function:Interacts with the basal transcription machinery by coordinating the formation of a multiprotein complex at the C-FOS promoter, and linking specific signal responsive activator complexes. Promotes the formation of stable high-order complexes of SRF and PHOX1 and interacts cooperatively with PHOX1 to promote serum-inducible transcription of a reporter gene driven by the C-FOS serum response element (SRE). Acts as a coregulator for USF1 by binding independently two promoter elements, a pyrimidine-rich initiator (Inr) and an upstream E-box. Required for the formation of functional ARID3A DNA-binding complexes and for activation of immunoglobulin heavy-chain transcription upon B-lymphocyte activation.,PTM:Sumoylated.,PTM:Transiently phosphorylated on tyrosine residues by BTK in response to B-cell receptor stimulation. Phosphorylation on Tyr-248 and Tyr-398, and perhaps, on Tyr-503 contributes to BTK-mediated transcriptional activation.,similarity:Belongs to the TFII-I family.,similarity:Contains 6 GTF2I-like repeats.,subcellular location:Colocalizes with BTK in the cytoplasm.,subunit:Homodimer (Potential). Interacts with SRF and PHOX1. Binds a pyrimidine-rich initiator (Inr) and a recognition site (E-box) for upstream stimulatory factor 1 (USF1). Associates with the PH domain of Bruton's tyrosine kinase (BTK). May be a component of a BHC histone deacetylase complex that contains HDAC1, HDAC2, HMG20B/BRAF35, AOF2/LSD1, RCOR1/CoREST, PHF21A/BHC80, ZMYM2, ZNF217, ZMYM3, GSE1 and GTF2I. Interacts with BTK and ARID3A.,tissue specificity:Ubiquitous. Isoform 1 is strongly expressed in fetal brain, weakly in adult brain, muscle, and lymphoblasts and is almost undetectable in other adult tissues, while the other isoforms are equally expressed in all adult tissues.,

---

## | Validation Data



Enzyme-Linked Immunosorbent Assay (Phospho-ELISA) for Immunogen Phosphopeptide (Phospho-left) and Non-Phosphopeptide (Phospho-right), using TFII-I (Phospho-Tyr248) Antibody



Western blot analysis of lysates from LOVO cells, using TFII-I (Phospho-Tyr248) Antibody. The lane on the right is blocked with the phospho peptide.

## Contact information

Orders: [order@immunoway.com](mailto:order@immunoway.com)  
 Support: [tech@immunoway.com](mailto:tech@immunoway.com)  
 Telephone: 877-594-3616 (Toll Free), 408-747-0185  
 Website: <http://www.immunoway.com>  
 Address: 2200 Ringwood Ave San Jose, CA 95131 USA



Please scan the QR code to access additional product information:  
**TFII-I (Phospho Tyr248) Rabbit pAb**

For Research Use Only. Not for Use in Diagnostic Procedures.

[Antibody](#) | [ELISA Kits](#) | [Protein](#) | [Reagents](#)