

PTP α (Phospho Tyr798) Rabbit pAb

CatalogNo: YP0317

Orthogonal Validated 

Key Features

Host Species

- Rabbit

Reactivity

- Human, Mouse, Rat, Monkey

Applications

- WB, ELISA, IHC

MW

- 100kD, 90kD (Observed)

Isotype

- IgG

Recommended Dilution Ratios

WB 1:500-2000**IHC 1:50-300****ELISA 1:2000-20000**

Storage

Storage*

-15°C to -25°C/1 year (Do not lower than -25°C)

Formulation

Liquid in PBS containing 50% glycerol, 0.5% BSA and 0.02% sodium azide.

Basic Information

Clonality

Polyclonal

Immunogen Information

Immunogen

The antiserum was produced against synthesized peptide derived from human PTPRA around the phosphorylation site of Tyr798. AA range: 753-802

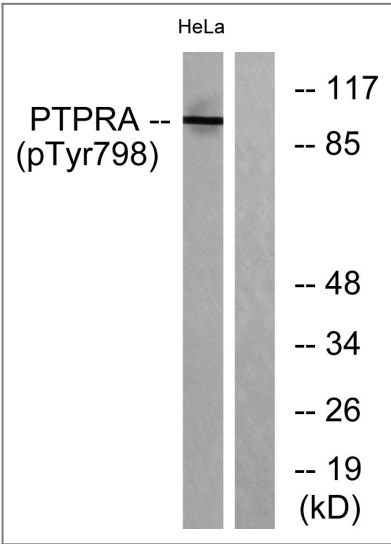
Specificity

Phospho-PTP α (Y798) Polyclonal Antibody detects endogenous levels of PTP α protein only when phosphorylated at Y798. The name of modified sites may be influenced by many factors, such as species (the modified site was not originally found in human samples) and the change of protein sequence (the previous protein sequence is incomplete, and the protein sequence may be prolonged with the development of protein sequencing technology). When naming, we will use the "numbers" in historical reference to keep the sites consistent with the reports. The antibody binds to the following modification sequence (lowercase letters are modification sites): SDyAN

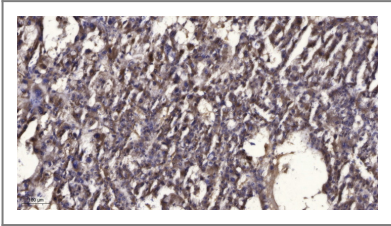
Target Information

Gene name	PTPRA		
Protein Name	Receptor-type tyrosine-protein phosphatase alpha		
	Organism	Gene ID	UniProt ID
	Human	5786 ;	P18433 ;
	Mouse	19262 ;	P18052 ;
	Rat		Q03348 ;
Cellular Localization	Cell membrane ; Single-pass type I membrane protein . Cell junction, focal adhesion . Localizes to focal adhesion sites following integrin engagement. .		
Tissue specificity	Brain,Epithelium,Kidney,Lymph node,Skin,		
Function	Catalytic activity:Protein tyrosine phosphate + H(2)O = protein tyrosine + phosphate.,similarity:Belongs to the protein-tyrosine phosphatase family. Receptor class 4 subfamily.,similarity:Contains 2 tyrosine-protein phosphatase domains.,		

Validation Data



Western blot analysis of lysates from HeLa cells treated with serum 20% 15', using PTPRA (Phospho-Tyr798) Antibody. The lane on the right is blocked with the phospho peptide.



Immunohistochemical analysis of paraffin-embedded human liver cancer. 1, Antibody was diluted at 1:200(4° overnight). 2, Tris-EDTA,pH9.0 was used for antigen retrieval. 3,Secondary antibody was diluted at 1:200(room temperature, 45min).

| Contact information

Orders: order@immunoway.com
Support: tech@immunoway.com
Telephone: 877-594-3616 (Toll Free), 408-747-0185
Website: <http://www.immunoway.com>
Address: 2200 Ringwood Ave San Jose, CA 95131 USA



Please scan the QR code
to access additional
product information:

**PTP α (Phospho
Tyr798) Rabbit pAb**

For Research Use Only. Not for Use in Diagnostic Procedures.

[Antibody](#) | [ELISA Kits](#) | [Protein](#) | [Reagents](#)