

# PLC $\gamma$ 1 (Phospho Tyr1253) Rabbit pAb

CatalogNo: YP0315 Orthogonal Validated 

## Key Features

### Host Species

- Rabbit

### Reactivity

- Human, Mouse, Rat

### Applications

- WB, IHC, ELISA

### MW

- 150kD (Observed)

### Isotype

- IgG

## Storage

**Storage\*** -15°C to -25°C/1 year (Do not lower than -25°C)

**Formulation** Liquid in PBS containing 50% glycerol, 0.5% BSA and 0.02% sodium azide.

## Recommended Dilution Ratios

**WB 1:500-2000**

**IHC 1:50-300**

**ELISA 5000-1:20000**

## Basic Information

**Clonality** Polyclonal

## Immunogen Information

**Immunogen** The antiserum was produced against synthesized peptide derived from human PLCG1 around the phosphorylation site of Tyr1253. AA range:1221-1270

**Specificity** Phospho-PLC  $\gamma$ 1 (Y1253) Polyclonal Antibody detects endogenous levels of PLC  $\gamma$ 1 protein only when phosphorylated at Y1253. The name of modified sites may be influenced by many factors, such as species (the modified site was not originally found in human samples) and the change of protein sequence (the previous protein sequence is incomplete, and the protein sequence may be prolonged with the development of protein sequencing technology). When naming, we will use the "numbers" in historical reference to keep the sites consistent with the reports. The antibody binds to the following modification sequence (lowercase letters are modification sites):SRyQQ

---

## Target Information

**Gene name** PLCG1

**Protein Name** 1-phosphatidylinositol 4,5-bisphosphate phosphodiesterase gamma-1

Organism	Gene ID	UniProt ID
Human	<a href="#">5335</a> ;	<a href="#">P19174</a> ;
Mouse	<a href="#">18803</a> ;	<a href="#">Q62077</a> ;
Rat	<a href="#">25738</a> ;	<a href="#">P10686</a> ;

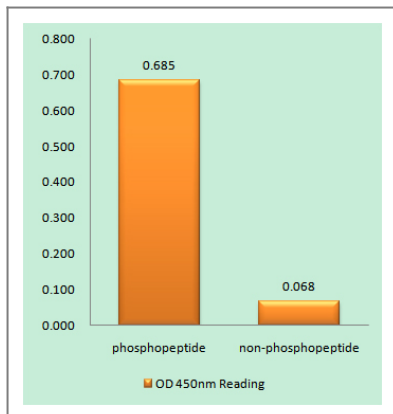
**Cellular Localization** Cell projection, lamellipodium . Cell projection, ruffle . Rapidly redistributed to ruffles and lamellipodia structures in response to epidermal growth factor (EGF) treatment. .

**Tissue specificity** Brain,Epithelium,Testis,Vein,

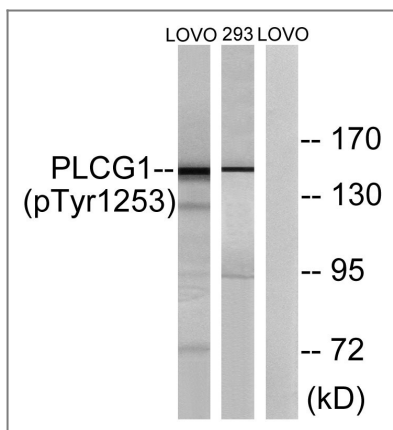
**Function** Catalytic activity:1-phosphatidyl-1D-myo-inositol 4,5-bisphosphate + H(2)O = 1D-myo-inositol 1,4,5-trisphosphate + diacylglycerol.,cofactor:Calcium.,Domain:The SH3 domain mediates interaction with CLNK (By similarity). The SH3 domain also mediates interaction with RALGPS1.,Function:PLC-gamma is a major substrate for heparin-binding growth factor 1 (acidic fibroblast growth factor)-activated tyrosine kinase.,PTM:The receptor-mediated activation of PLC-gamma-1 and PLC-gamma-2 involves their phosphorylation by tyrosine kinases in response to ligation of a variety of growth factor receptors and immune system receptors.,PTM:Ubiquitinated by CBLB in activated T-cells.,similarity:Contains 1 C2 domain.,similarity:Contains 1 EF-hand domain.,similarity:Contains 1 PH domain.,similarity:Contains 1 PI-PLC X-box domain.,similarity:Contains 1 PI-PLC Y-box domain.,similarity:Contains 1 SH3 domain.,similarity:Contains 2 PH domains.,similarity:Contains 2 SH2 domains.,similarity:Contains 3 PH domains.,subunit:Interacts with AGAP2 via its SH3 domain (By similarity). Interacts with phosphorylated LAT upon TCR activation. Interacts with the Pro-rich domain of TNK1 via its SH3 domain. Associates with BLNK, VAV1, GRB2 and NCK1 in a B-cell antigen receptor-dependent fashion. Interacts with CBLB in activated T-cells; which inhibits phosphorylation. Interacts with SHB. Interacts via its SH3 domain with the Arg/Gly-rich-flanked Pro-rich domains of KHDRBS1/SAM68. This interaction is selectively regulated by arginine methylation of KHDRBS1/SAM68. Interacts with INPP5D/SHIP1 and CLNK (By similarity). Interacts with RALGPS1. Interacts (via SH3 domain) with HEV ORF3 protein.,

---

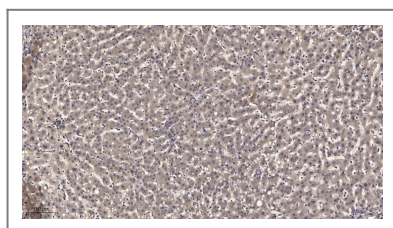
## Validation Data



Enzyme-Linked Immunosorbent Assay (Phospho-ELISA) for Immunogen Phosphopeptide (Phospho-left) and Non-Phosphopeptide (Phospho-right), using PLCG1 (Phospho-Tyr1253) Antibody



Western blot analysis of lysates from LOVO cells treated with and 293 cells treated with heat shock, using PLCG1 (Phospho-Tyr1253) Antibody. The lane on the right is blocked with the phospho peptide.



Immunohistochemical analysis of paraffin-embedded human liver cancer. 1, Antibody was diluted at 1:200 (4°C overnight). 2, Tris-EDTA, pH9.0 was used for antigen retrieval. 3, Secondary antibody was diluted at 1:200 (room temperature, 45min).

## Contact information

Orders: [order@immunoway.com](mailto:order@immunoway.com)  
 Support: [tech@immunoway.com](mailto:tech@immunoway.com)  
 Telephone: 877-594-3616 (Toll Free), 408-747-0185  
 Website: <http://www.immunoway.com>  
 Address: 2200 Ringwood Ave San Jose, CA 95131 USA



Please scan the QR code to access additional product information:  
**PLC  $\gamma$ 1 (Phospho Tyr1253) Rabbit pAb**