

CD19 (Phospho Tyr531) Rabbit pAb

CatalogNo: YP0295 Orthogonal Validated 

Key Features

Host Species

- Rabbit

Reactivity

- Human, Mouse, Monkey

Applications

- WB, ELISA

MW

- 61kD (Observed)

Isotype

- IgG

Storage

Storage* -15°C to -25°C/1 year (Do not lower than -25°C)

Formulation Liquid in PBS containing 50% glycerol, 0.5% BSA and 0.02% sodium azide.

Recommended Dilution Ratios

WB 1:500-1:2000

ELISA 1:10000

Not yet tested in other applications.

Basic Information

Clonality Polyclonal

Immunogen Information

Immunogen The antiserum was produced against synthesized peptide derived from human CD19 around the phosphorylation site of Tyr531. AA range:501-550

Specificity Phospho-CD19 (Y531) Polyclonal Antibody detects endogenous levels of CD19 protein only when phosphorylated at Y531. The name of modified sites may be influenced by many factors, such as species (the modified site was not originally found in human samples) and the change of protein sequence (the previous protein sequence is incomplete, and the protein sequence may be prolonged with the development of protein sequencing technology). When naming, we will use the "numbers" in historical reference to keep the sites consistent with the reports. The antibody binds to the following modification sequence (lowercase letters are modification sites):DSyEN

Target Information

Gene name CD19

Protein Name B-lymphocyte antigen CD19

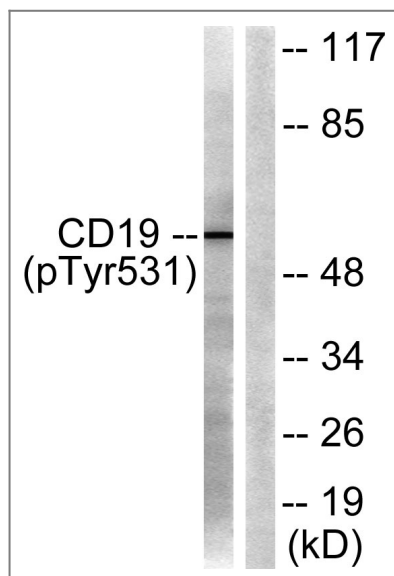
Organism	Gene ID	UniProt ID
Human	930 ;	P15391 ;
Mouse	12478 ;	P25918 ;

Cellular Localization Cell membrane ; Single-pass type I membrane protein . Membrane raft ; Single-pass type I membrane protein .

Tissue specificity Detected on marginal zone and germinal center B cells in lymph nodes (PubMed:2463100). Detected on blood B cells (at protein level) (PubMed:2463100, PubMed:16672701).

Function Disease:Defects in CD19 are a cause of hypogammaglobulinemia [MIM:107265].,Function:Assembles with the antigen receptor of B lymphocytes in order to decrease the threshold for antigen receptor-dependent stimulation.,online information:CD19 mutation db,PTM:Phosphorylated on serine and threonine upon DNA damage, probably by ATM or ATR. Phosphorylated on tyrosine following B-cell activation.,similarity:Contains 2 Ig-like C2-type (immunoglobulin-like) domains.,subunit:Forms a complex with CD21, CD81 and CD225 in the membrane of mature B cells. Interacts with VAV. Interacts with GRB2 and SOS when phosphorylated on Tyr-348 and/or Tyr-378. Interacts with PLCG2 when phosphorylated on Tyr-409.,

Validation Data



Western blot analysis of lysates from COS7 cells treated with Serum 10% 30', using CD19 (Phospho-Tyr531) Antibody. The lane on the right is blocked with the phospho peptide.

Contact information

Orders: order@immunoway.com
Support: tech@immunoway.com
Telephone: 877-594-3616 (Toll Free), 408-747-0185
Website: http://www.immunoway.com
Address: 2200 Ringwood Ave San Jose, CA 95131 USA



Please scan the QR code
to access additional
product information:
**CD19 (Phospho
Tyr531) Rabbit pAb**

For Research Use Only. Not for Use in Diagnostic Procedures.

[Antibody](#) | [ELISA Kits](#) | [Protein](#) | [Reagents](#)