

ATF-1 (Phospho Ser63) Rabbit pAb

CatalogNo: YP0294 Orthogonal Validated 

Key Features

Host Species

- Rabbit

Reactivity

- Human, Mouse

Applications

- WB, ELISA

MW

- 29kD (Observed)

Isotype

- IgG

Storage

Storage* -15°C to -25°C/1 year (Do not lower than -25°C)

Formulation Liquid in PBS containing 50% glycerol, 0.5% BSA and 0.02% sodium azide.

Recommended Dilution Ratios

WB 1:500-1:2000

ELISA 1:5000

Not yet tested in other applications.

Basic Information

Clonality Polyclonal

Immunogen Information

Immunogen The antiserum was produced against synthesized peptide derived from human ATF1 around the phosphorylation site of Ser63. AA range:31-80

Specificity Phospho-ATF-1 (S63) Polyclonal Antibody detects endogenous levels of ATF-1 protein only when phosphorylated at S63. The name of modified sites may be influenced by many factors, such as species (the modified site was not originally found in human samples) and the change of protein sequence (the previous protein sequence is incomplete, and the protein sequence may be prolonged with the development of protein sequencing technology). When naming, we will use the "numbers" in historical reference to keep the sites consistent with the reports. The antibody binds to the following modification sequence (lowercase letters are modification sites):RPsYR

Target Information

Gene name ATF1

Protein Name Cyclic AMP-dependent transcription factor ATF-1

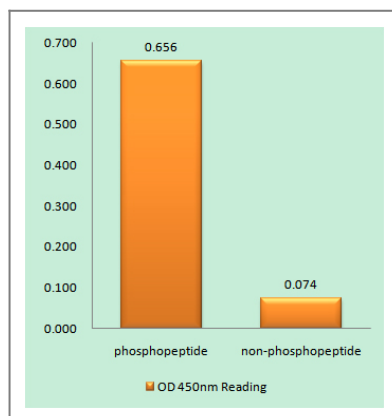
| Organism | Gene ID | UniProt ID |
|----------|-------------------------|--------------------------|
| Human | 466 ; | P18846 ; |
| Mouse | 11908 ; | P81269 ; |

Cellular Localization Nucleus .

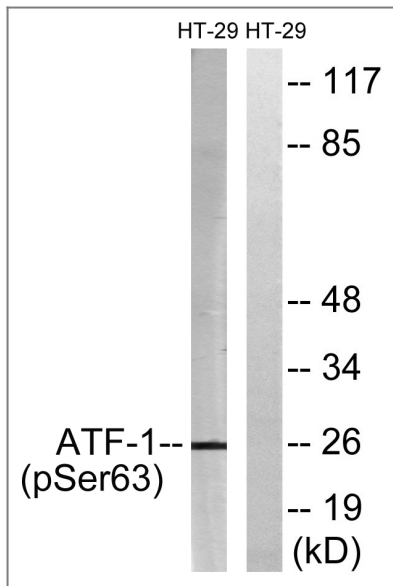
Tissue specificity Bone marrow,

Function Disease:A chromosomal aberration involving ATF1 is associated with angiomatoid fibrous histiocytoma (AFH) [MIM:612160]. Translocation t(12;16)(q13;p11.2) with FUS generates a chimeric ATF1/FUS protein.,Disease:A chromosomal aberration involving ATF1 is associated with angiomatoid fibrous histiocytoma (AFH) [MIM:612160]. Translocation t(12;22)(q13;q12) with EWSR1 generates a chimeric ATF1/EWSR1 protein.,Function:This protein binds the cAMP response element (CRE) (consensus: 5'-GTGACGT[AC][AG]-3'), a sequence present in many viral and cellular promoters. Binds to the Tax-responsive element (TRE) of HTLV-I. Mediates PKA-induced stimulation of CRE-reporter genes.,similarity:Belongs to the bZIP family. ATF subfamily.,similarity:Contains 1 bZIP domain.,similarity:Contains 1 KID (kinase-inducible) domain.,subunit:Binds DNA as a dimer.,

Validation Data



Enzyme-Linked Immunosorbent Assay (Phospho-ELISA) for Immunogen Phosphopeptide (Phospho-left) and Non-Phosphopeptide (Phospho-right), using ATF1 (Phospho-Ser63) Antibody



Western blot analysis of lysates from HT29 cells treated with Insulin 0.01U/ML 15', using ATF1 (Phospho-Ser63) Antibody. The lane on the right is blocked with the phospho peptide.

Contact information

Orders: order@immunoway.com
Support: tech@immunoway.com
Telephone: 877-594-3616 (Toll Free), 408-747-0185
Website: <http://www.immunoway.com>
Address: 2200 Ringwood Ave San Jose, CA 95131 USA



Please scan the QR code to access additional product information:
ATF-1 (Phospho Ser63) Rabbit pAb

For Research Use Only. Not for Use in Diagnostic Procedures.

[Antibody](#) | [ELISA Kits](#) | [Protein](#) | [Reagents](#)