

## eIF4B (Phospho Ser422) Rabbit pAb

CatalogNo: YP0280

### | Key Features

#### Host Species

- Rabbit

#### Reactivity

- Human, Mouse

#### Applications

- WB, IHC, IF, ELISA

#### MW

- 80kD (Observed)

#### Isotype

- IgG

### | Recommended Dilution Ratios

**WB 1:500-1:2000**

**IHC 1:100-1:300**

**IF 1:200-1:1000**

**ELISA 1:40000**

**Not yet tested in other applications.**

### | Storage

#### Storage\*

-15°C to -25°C/1 year (Do not lower than -25°C)

#### Formulation

Liquid in PBS containing 50% glycerol, 0.5% BSA and 0.02% sodium azide.

### | Basic Information

#### Clonality

Polyclonal

### | Immunogen Information

#### Immunogen

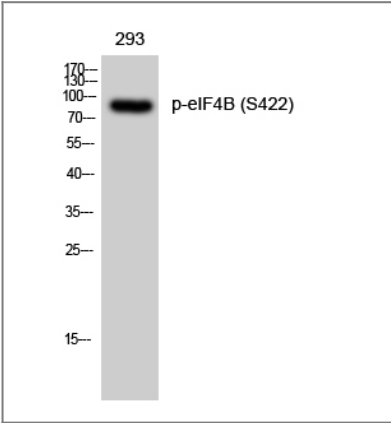
The antiserum was produced against synthesized peptide derived from human eIF4B around the phosphorylation site of Ser422. AA range: 388-437

**Specificity** Phospho-eIF4B (S422) Polyclonal Antibody detects endogenous levels of eIF4B protein only when phosphorylated at S422. The name of modified sites may be influenced by many factors, such as species (the modified site was not originally found in human samples) and the change of protein sequence (the previous protein sequence is incomplete, and the protein sequence may be prolonged with the development of protein sequencing technology). When naming, we will use the "numbers" in historical reference to keep the sites consistent with the reports. The antibody binds to the following modification sequence (lowercase letters are modification sites):TGsES

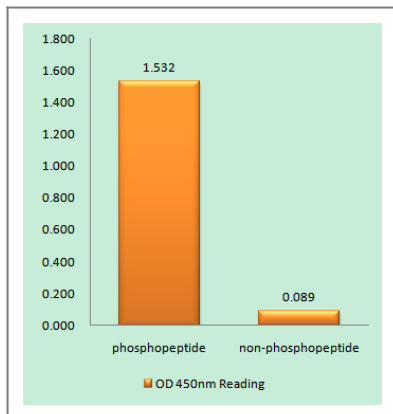
## Target Information

Gene name	EIF4B		
Protein Name	Eukaryotic translation initiation factor 4B		
	Organism	Gene ID	UniProt ID
	Human	<a href="#">3716</a> ;	<a href="#">P23588</a> ;
	Mouse	<a href="#">75705</a> ;	<a href="#">Q8BGD9</a> ;
Cellular Localization	cytosol, polysome, eukaryotic translation initiation factor 4F complex, dendrite, neuronal cell body,		
Tissue specificity	Adipose tissue, Brain, Cervix carcinoma, Epithelium, Liver, Lung		
Function	Function: Required for the binding of mRNA to ribosomes. Functions in close association with EIF4-F and EIF4-A. Binds near the 5'-terminal cap of mRNA in presence of EIF-4F and ATP. Promotes the ATPase activity and the ATP-dependent RNA unwinding activity of both EIF4-A and EIF4-F., similarity: Contains 1 RRM (RNA recognition motif) domain., subunit: Self-associates and interacts with EIF3 p170 subunit.,		

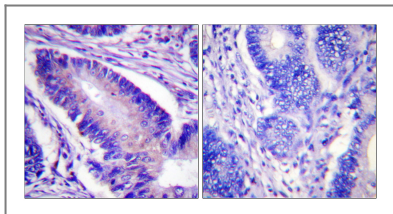
## Validation Data



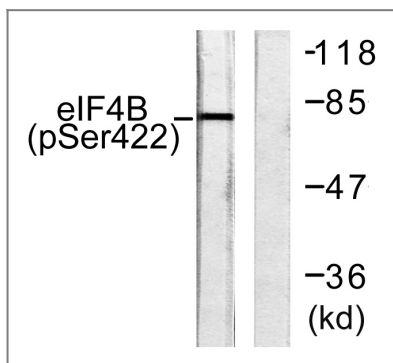
Western Blot analysis of 293 cells using Phospho-eIF4B (S422) Polyclonal Antibody diluted at 1:2000



Enzyme-Linked Immunosorbent Assay (Phospho-ELISA) for Immunogen Phosphopeptide (Phospho-left) and Non-Phosphopeptide (Phospho-right), using eIF4B (Phospho-Ser422) Antibody



Immunohistochemistry analysis of paraffin-embedded human colon carcinoma, using eIF4B (Phospho-Ser422) Antibody. The picture on the right is blocked with the phosphopeptide.



Western blot analysis of lysates from NIH/3T3 cells, using eIF4B (Phospho-Ser422) Antibody. The lane on the right is blocked with the phosphopeptide.

## Contact information

Orders: [order@immunoway.com](mailto:order@immunoway.com)  
 Support: [tech@immunoway.com](mailto:tech@immunoway.com)  
 Telephone: 877-594-3616 (Toll Free), 408-747-0185  
 Website: <http://www.immunoway.com>  
 Address: 2200 Ringwood Ave San Jose, CA 95131 USA



Please scan the QR code to access additional product information:  
**eIF4B (Phospho Ser422) Rabbit pAb**

For Research Use Only. Not for Use in Diagnostic Procedures.

[Antibody](#) | [ELISA Kits](#) | [Protein](#) | [Reagents](#)