

Tensin-2 (Phospho Tyr483) Rabbit pAb

CatalogNo: YP0268

Key Features

Host Species

- Rabbit

Reactivity

- Human, Mouse

Applications

- WB, ELISA

MW

- 152kD (Observed)

Isotype

- IgG

Recommended Dilution Ratios

WB 1:500-1:2000**ELISA 1:10000****Not yet tested in other applications.**

Storage

Storage*

-15°C to -25°C/1 year (Do not lower than -25°C)

Formulation

Liquid in PBS containing 50% glycerol, 0.5% BSA and 0.02% sodium azide.

Basic Information

Clonality

Polyclonal

Immunogen Information

Immunogen

Synthesized phospho-peptide around the phosphorylation site of human Tensin-2 (phospho Tyr483)

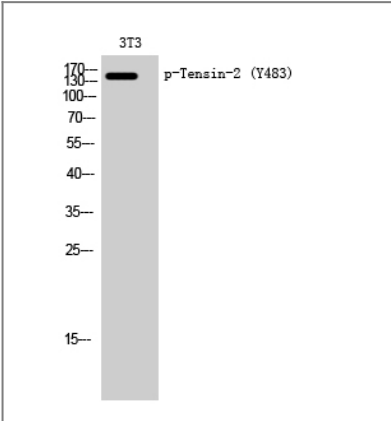
Specificity

Phospho-Tensin-2 (Y483) Polyclonal Antibody detects endogenous levels of Tensin-2 protein only when phosphorylated at Y483. The name of modified sites may be influenced by many factors, such as species (the modified site was not originally found in human samples) and the change of protein sequence (the previous protein sequence is incomplete, and the protein sequence may be prolonged with the development of protein sequencing technology). When naming, we will use the "numbers" in historical reference to keep the sites consistent with the reports. The antibody binds to the following modification sequence (lowercase letters are modification sites): SPyAQ

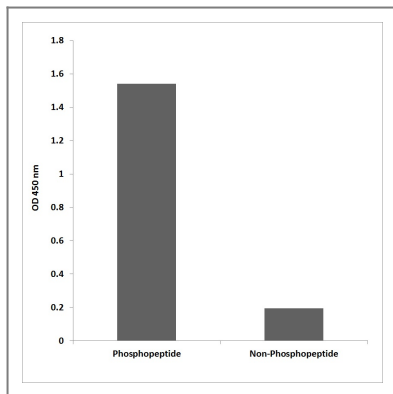
Target Information

Gene name	TENC1		
Protein Name	Tensin-like C1 domain-containing phosphatase		
	Organism	Gene ID	UniProt ID
	Human	23371 ;	Q63HR2 ;
	Mouse	209039 ;	Q8CGB6 ;
Cellular Localization	Cell junction, focal adhesion . Cell membrane ; Peripheral membrane protein ; Cytoplasmic side . Detected at the end of actin stress fibers. Detected in cytoplasmic punctate bodies (PubMed:22019427). .		
Tissue specificity	Detected in heart, kidney, brain, thymus, spleen, liver, placenta, lung, skeletal muscle and small intestine.		
Function	Function:Regulates cell motility and proliferation. May have phosphatase activity. Reduces AKT1 phosphorylation. Lowers AKT1 kinase activity and interferes with AKT1 signaling.,similarity:Contains 1 C2 tensin-type domain.,similarity:Contains 1 phorbol-ester/DAG-type zinc finger.,similarity:Contains 1 phosphatase tensin-type domain.,similarity:Contains 1 SH2 domain.,subcellular location:Detected at the end of actin stress fibers.,subunit:Interacts with AXL.,tissue specificity:Detected in heart, kidney, brain, thymus, spleen, liver, placenta, lung, skeletal muscle and small intestine.,		

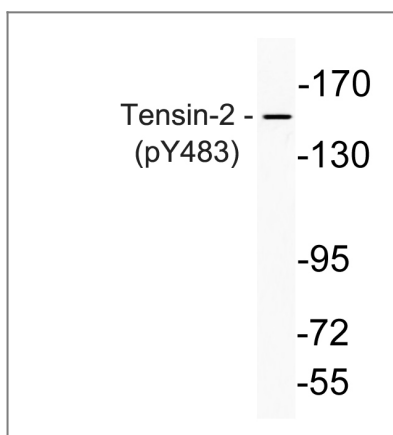
Validation Data



Western Blot analysis of 3T3 cells using Phospho-Tensin-2 (Y483) Polyclonal Antibody diluted at 1:2000



Enzyme-Linked Immunosorbent Assay (Phospho-ELISA) for Immunogen Phosphopeptide (Phospho-left) and Non-Phosphopeptide (Phospho-right), using Tensin-2 (Phospho-Tyr483) Antibody



Western blot analysis of lysate from K562 cells, using phospho-Thrensin-2 (Phospho-Tyr483) antibody .

Contact information

Orders: order@immunoway.com
 Support: tech@immunoway.com
 Telephone: 877-594-3616 (Toll Free), 408-747-0185
 Website: <http://www.immunoway.com>
 Address: 2200 Ringwood Ave San Jose, CA 95131 USA



Please scan the QR code to access additional product information:

Tensin-2 (Phospho Tyr483) Rabbit pAb

For Research Use Only. Not for Use in Diagnostic Procedures.

[Antibody](#) | [ELISA Kits](#) | [Protein](#) | [Reagents](#)